

2021-2022

# LUXURY LIVING

A Look at the  
Evolving Trends  
Redefining Luxury

LUXURY LIVING 2021-2022

Shanghai  
**Family**  
www.shfamily.com





# COME LIVE

## 经典服务公寓



SERVICED APARTMENT  
LEASING HOTLINE  
租赁咨询电话  
(86 21) 6279 8502

*Life at Your Doorstep*



Shanghai Centre  
上海商城



# LUXURY LIVING

2021

Your ultimate guide to chic,  
stylish and comfortable living in  
Shanghai.

*From five-star hotels to boutique concepts,  
gourmet restaurants to neighbourhood  
bistros, antique shops and designer hubs,  
Luxury Living reveals all the greatest  
pleasures Shanghai has to offer.*

December 26th

虎媽牛娃  
HUMANIUWA

Shanghai  
Family

Parents & Kids  
SHANGHAI



阳光城·睿湾  
Le Ville Residence Shanghai Biyun



阳光城·睿湾  
Le Ville Residence

行之所至  
ENJOY 享你所想  
ON THE WAY



- A Home Away From Home  
By Warm Home Design
- Considerate Hotel Service

+86-21-38602288

No.15-16, Lane 450, Hongfeng Road,  
Pudong New Area, Shanghai, China  
中国上海市浦东新区红枫路450弄15-16号



Le Ville Residence Shanghai Biyun is located in the heart of Green City in Pudong New Area which is well known as "Little United Nations" in Shanghai. There are 180 apartments in total, including 152 apartments and 28 townhouses. Le Ville Residence Biyun was designed in a modern and warm way. The community environment is surrounded by vast of trees and full of fresh air. The flexible and convenient lease period, such as daily, monthly and annual are available living space and a home away from home stay experience.



As we are coming out of the shadows of the pandemic, one thing we learned this past year is that our perspective of luxury has shifted. From luxury as a physical manifestation to one that is personal and on enriching experiences.

One of the post-pandemic trends is how our living quarters have become a multi-functional space. What was once our personal haven has transformed into a home office or a classroom. As our different worlds have collided, the sense of personal space has become smaller. With what we have, we expect more from our quality of life. We saw how nature blossomed during the time when the world stood still and we now demand more from our living environment. From better air quality to how we are conserving energy and maximising space. In this issue we examine how buildings are taking the extra step to improve our livelihood by getting internationally accredited certifications for health and safety (18).

As reuniting with our families overseas are harder, we begin to seek more meaning when it comes to holiday planning. And sometimes, that means taking meaningful pauses in life to regroup yourself (102) and search for unique, once-in-a-lifetime holiday experiences. From glamping to wellness retreats, domestic travel is not just about city experiences but about creating quality adventures (104).

With our outdoor activities limited we begin to cherish our health more and being more conscious of food choices. Take a look behind the growing plant-based movement (90) and learn about the key power players. As we focus on getting healthy, we also begin following up on good habits with annual checkups (112) and learning how to foster that habit from the early years (114).

It has been a whirlwind year and we hope you enjoy our edition of Luxury Living 2021.

*Anabela Mok*  
Anabela Mok,  
Managing Editor,  
on behalf of the editorial team

## LUXURY LIVING

www.shfamily.com

General Manager / Jenny Wu  
总策划 / 吴东坤

Managing Editor / Anabela Mok  
策划 / 莫宠仪

Editor / Lynn Yen  
编辑 / 颜玲

Contributors / Sam Braybon, Cristina Ng, Jodie Ratcliffe

Censor / Wan Lixin  
特约审订 / 万里新

Designer / Eric Chung  
美术设计 / 钟琦

Photographer / Zheng Bin  
摄影师 / 郑斌

Sales / Lorraine Hou, Fang Fang Hu, Helen Yu  
销售代表 / 侯琨, 胡芳芳, 于庭

Production & Distribution Manager / Peihua Xu  
印制, 发行经理 / 徐佩华

Advertising Hotline

021 5838 1961

shadvertise@shfamily.com

Write to us at: editor@shfamily.com

Family events: familyevents@shfamily.com

Marketing team: marketing@shfamily.com

新民晚报 社区版 随报赠阅

上海报业集团主管主办  
国内统一刊号: CN31-0062

广告许可证: 沪工商广字 3100020080019

Shanghai Xinmin Community Media Co. Ltd.

Head Office: 15F, 839 Middle Yan'an Road  
Pudong Office: 10F, Bldg 2, Huiyang Building,  
1139 Shibo Avenue  
上海新民社区传媒有限公司

总部: 上海延安中路 839 号 15 楼

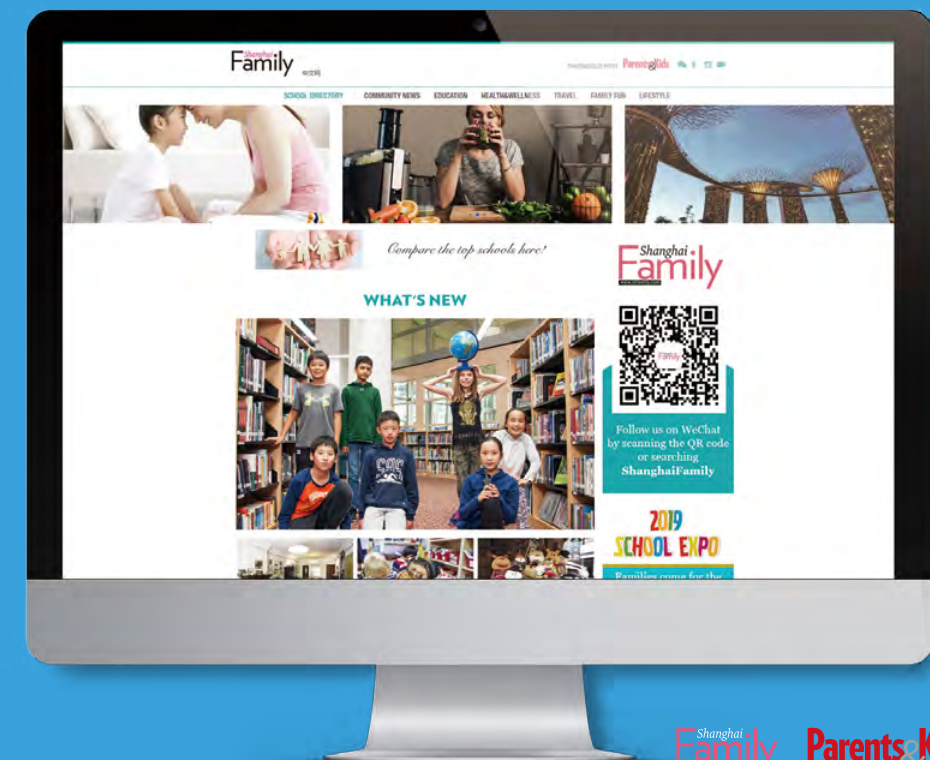
浦东运营部: 世博大道 1139 弄惠扬大厦 2 号楼 1001 室

电话: 021 5838 1961 / 021 5838 1991



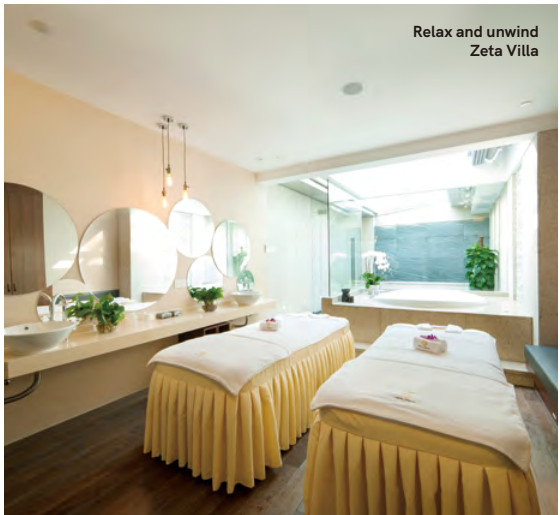
For the latest info on family life, education, health and wellness, food, travel, lifestyle and much more!

www.shfamily.com





CONTENTS



<b>Cover Story</b>	<b>10</b>
Redefining Luxury	10
<b>Serviced Apartments &amp; Villas</b>	<b>16</b>
Seals of Approval	18
Discover the Appeal of Modern and Smart Living	22
Central Residences II	
There is No Better Place to Call Home	44
Times Square Apartments	
<b>Hotels</b>	<b>50</b>
Breaking Through New Frontiers of Travelling	52
A New Mountain Escape	56
La Villa by La Montagne	
<b>Restaurants</b>	<b>88</b>
The Future is Plant-Based	90
<b>Wellness &amp; Spa</b>	<b>100</b>
Pressing Pause	102
A Journey of Life Exploration, an Insight into the True Self	104
Octave Institute	
<b>Health</b>	<b>110</b>
Why Annual Health Checks Matter	112
DeltaHealth	
A Relationship Beyond the Baby Years	114
Shanghai United Family Healthcare	
<b>International Schools</b>	<b>124</b>
<b>Museums, Galleries &amp; Performance</b>	<b>142</b>
<b>Index</b>	<b>146</b>





# REDEFINING LUXURY

A LOOK AT THE EVOLVING TRENDS OF LUXURY.

By Lynn Yen

A lot has changed in the last two years. The way we live our lives has been drastically affected by the pandemic, along with which things we place value on and prioritize, but there are other trends influencing our lives and shaping how we spend our money.

Consumer decision making is evolving. The environment around us is changing, and consumers are reacting to those changes. There are also larger currents moving in the background such as a focus on environmentally friendly living spurred on by more frequent severe weather.

We are deciding to spend our disposable income now on luxuries that look different than the luxuries of the past. The things, experiences, and services we covet now focus on health and wellness, reconnecting with the natural world, and novelty experiences.

Consumer tastes are also maturing with more conscious and educated spending habits. The shopper of today evaluates the larger impact of what brands they patron, knowing that every purchase is essentially a vote in favor of a corporation's ethos.

These trends are redefining the look of luxury.

An older view of luxury in China was an over-the-top opulence. Luxury used to look like a gold-plated toilet, in a gold-plated palace belonging to Hong Kong entrepreneur Lam Sai-wing circa 2008. A decade on, the shine and bling of gold and diamonds are still here, but more and more the things people really want and prioritize are less gold more green.

## Defining Luxury

A good place to start is asking, what is a luxury and how is luxury being redefined?

Intuitively, a luxury is something you splurge on, something you really want and prioritize, and save up or redistribute your money to acquire. A luxury can mean different things to different people in different income and wealth brackets.

An academic view of luxury is defined as an item that is not necessary to live but is deemed highly desirable. These goods are recognizable by increases in demand when a person's income increases.

So when we have more money, what do we choose to spend it on?

## Winds of Change

The consumer of today wants a physical and spiritual holiday, an escape from an unpleasant reality, and a novel experience. Frankly, we need a break.

People are quitting their jobs in the U.S. "The U.S. Bureau of Labor Statistics announced that 4.3 million Americans, or 2.9% of the entire workforce, quit their jobs in August," according to National Public Radio. "UC Berkeley economist Ulrike Malmendier suggests there's something existential behind the Great Resignation: the pandemic and the rise of remote work have changed the way we view our lives and the world," the article continues.

In China, a few young people are lying flat, or tangping, a phrase encompassing the mentality of opting out of the corporate overworking rat race. The grind is getting to everyone.



**Going Back to Nature**

One way wary people are rejuvenating is by returning to nature in the form of glamping and travelling to the wide expanses of Western China. Humans feel at peace in nature, even looking at the colors blue and green can be calming, and calm is need now more than ever.

Glamping, a combination of the words glamorous and camping, in particular has turned into a major trend for young Chinese travellers. The glamping experience involves comfort, amenities and services. The tent and furnishings are already set up, water and electricity are flowing, plus food and entertainment activities are usually provided.

As reported by Sixth Tone, “last year, posts about glamping witnessed a 271% growth on Xiaohongshu, a trend that has only increased in 2021, according to the company. In July, the number of glamping-related searches in the app was up by 286% compared to the same period last year.”

Travelling to tourist destinations like Yellow Mountain, or Sanya in Hainan during a national holiday is described in Chinese by the phrase, renshan renhai translated as People Mountain, People Sea. You can visualize of the mass crowds. In contrast, a quaint camping trip that is equally comfortable and photo worthy has an appeal.

Similarly, across parts of Western China like Yunnan Province, you’ll find luxury boutique hotels a plenty. A chain boutique hotel, Songtsam offers guests a tour from Shangri-la in Yunnan to Lhasa in Tibet, going from one Songtsam minsu to the next. The hotel takes care of transportation, along with planning and booking excursions at each location. It’s an easy way to enjoy new, natural landscapes with all the amenities of home.

**Climate Conscious Spending**

Not only do people crave for unwinding in nature, they want to protect it for the future. In a year or floods, fires, typhoons, draughts, locust plagues in Eastern Africa, and mice plagues in Australia, our climate reality could have been taken straight from an apocalypse story. Humans are now acutely aware and feeling the effects of a changing climate.

Some ways individuals are contributing to helping the planet is by valuing sustainable products and



switching to vegetarian and vegan diets that pollute less.

China sales of Tesla increased to 22.6% of the electric vehicle company’s overall global sales in the third quarter of 2021, up from just under 20% a year prior, as reported by CNBC. That translates to sales of \$3.11 billion in China during that window. This is followed up with unprecedented demand for Tesla’s electric vehicles and company success with stock shares hitting a record high price, and a \$1 trillion market capitalization.

It’s not just the big names like Tesla that are popular, the whole new energy vehicle industry, encompassing both electric and hybrid cars, is booming. With increasingly well known Chinese brands like Guangzhou-based companies BYD, XPeng and Shanghai’s Nio growing their market foothold.

Another trend that is contributing to reducing the effects of climate change is eating less meat by becoming vegetarian, vegan, or flexitarian, an occasional vegetarian.

The most basic connection between eating meat and an increase in the greenhouse gas emissions causing warming of the planet is that cows emit methane.

An article from The Guardian quotes Dr Marco Springmann, senior researcher on environmental sustainability and public health at the University of Oxford, saying, “There are lots of different sectors that have an impact on emissions and the food system is surely one of the most important ones as it is globally responsible for about a third of all greenhouse gas emissions.”

Though some people call for a larger impact. The article further mentions Frank Mitloehner, professor and air quality extension specialist at the University of California at Davis saying, “going vegan for two years has the same saving impact as one flight Europe to the US would generate. If we really want to make a difference in carbon emissions we need to change policy.”

**A Wealth of Wellness**

The pandemic reminded us of the importance of wellness- physical, mental, and spiritual. And the trends show that consumers in China are prioritizing spending on their holistic health.





An article by South China Morning Post examined a study by Euromonitor saying that by 2025 the health and wellness industry in China is expected to reach a size of \$145.1 billion, an increase of 19.2% from 2020. The wellness industries range from activewear and sports gear to vitamins and supplements.

Traditional healthcare is also innovating and growing with technologies like health apps on smartphones and telemedicine.

Digital healthcare provider JD Health said, "In 2020 the company's annual active user accounts reached 89.9 million, an increase of 33.7 million year on year; and average daily consultations exceeded 100,000, which is more than five times that of 2019."

The article went on to say, "also reflecting the growth of the wellness industry is a spike in sales for products in the health, wellness and self-care categories. For example, during JD Worldwide's Black Friday shopping festival in 2020, sales of self-care products increased year on year by over 180%."

The health and wellness lessons we learned from the pandemic will continue on.

#### China's Love of Luxury

With boarder restrictions, domestic consumers are re-

discovering and enjoying what China has to offer from buying international brands at home, championing homegrown brands, and exploring the varied natural geographies of the vast country.

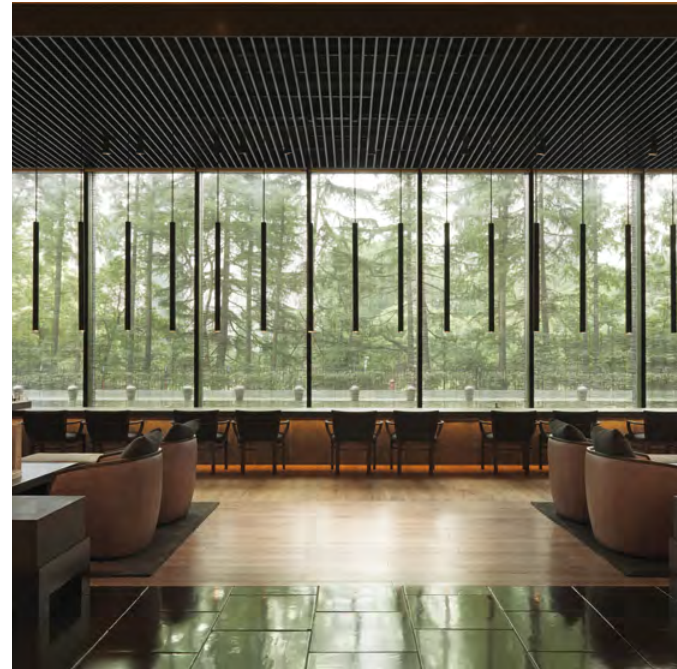
Before the pandemic, China was already emerging as the future of luxury. A McKinsey report from 2019 titled The Chinese Luxury Consumer expected "China's luxury spending will nearly double between now and 2025," from 770 billion RMB in 2018 to 1,227 billion RMB in 2025, amounting to 40% of the global market.

The pandemic hasn't shifted this trend. "Despite recent pandemic disruptions, Chinese consumers have remained the biggest growth opportunity for the luxury sector. Boston Consulting Group predicted luxury spending in China grew 20-30% during 2020," according to Jing Daily. "And as Chinese consumers convert their international budgets to domestic spending, brands must focus more on them where they live."

#### Hard Times Drive Desires for Luxury

In Shanghai we have minimal immediate threats to our health from COVID-19, thanks to China's Zero Covid approach. Though we are not immune to the constant buzz of Covid anxiety that is still all around. This can make everything seem harder.

You may have experienced Covid fatigue, which the



Mental Health Commission of Australia identifies as feeling worn-out, irritable, restless, and lack of enthusiasm for things you would normally enjoy. Our constant day in day out routines in the past were broken up with exciting plans or mental recharges through a vacation, or trip back to our home countries to visit friends and family.

On top of Covid effects, expats are facing tougher times. China had already planned for policy changes that are coming into effect now and are having an impact on foreigners in the country. The most direct effect is changes to taxation. Starting in 2022, education fees, housing stipends, and other incentives that once made up an expat relocation package, will no longer be tax exempt. This means extra strain on companies and employees to fill the gap or cut the costs.

Many people in our support networks are also changing. Farewell parties are a common social gathering these days. For some, the difficulty of closed borders means leaving China for good to be reunited with family members.

Under all of these present-day challenges, you may have felt the extra need to splurge and indulge in your desired luxury. A weekend getaway feels more essential. A trip to the spa is just as important as a trip to the doctor, and it's not just you or your immediate social circle that is feeling this way.



This feeling is a documented economic phenomenon called the Lipstick Effect. During hard economic times, such as the Great Depression of the 1920s, or the Global Great Recession starting in 2008, economists noticed curiously that the sales of lipstick rose. Despite financial pressures on other areas of life and limited cash, consumers still bought lipstick, a smaller luxury they could afford, and were purchasing at even higher rates than in economic upswings.

It doesn't take an expert psychologist to try to explain why this happens. When we feel restricted, or in the situation now, having former liberties like international travel restrained, we feel confined and crave a dose of luxury that make us feel better. The more pain we are under, the more we reach out for a salve in the form of luxury.

It may seem contradictory, but the current pandemic is an apt time to talk about luxury.

A lot has changed in the past two years. Shanghai has a different feel, but for a city that is always in motion, long-term residents have learned to hold on and ride the waves of change. The glamorous global jet setting lifestyle that once was, is at least for now, gone. But Shanghai, the Pearl of the East, will always be glamorous, luxurious, and refined.



# Serviced Apartments & Villas

LUXURY LIVING



Stylish living room at the Shanghai Centre serviced apartments, one of the most luxurious destinations in Shanghai.



## SEALS OF APPROVAL

MEET THE GLOBAL STANDARD BEARERS OF ENVIRONMENTAL AND HEALTHY BUILDINGS.

By Lynn Yen

Next time you walk into a serviced apartment, hotel, or mall you may just notice a large plaque or sticker on the entrance door and wonder 'what is that?' These are certificates from third parties that are earned by meeting standards of energy conservation or health and wellbeing. They are especially important in Shanghai, where environmental health is top of mind with residents needing to drink purified water, and air purifiers are a norm.

Building seals are a property developer's badge of achievement. Common ones you can find in Shanghai are the LEED, BREEAM, GBL and WELL certifications. Though the ultimate reward is not pride or prestige, rather it's the environmental benefits for society and the health security of the people that spend time in these buildings.

China has developed its own home grown Green Building Label, the Chinese national standard for environmentally friendly buildings. This regulation system is also called the 3 Star System, ranging from one star up to three stars. The standardized label was established in 2006 and is organized by the Green Building Council. The requirements for earning the certifications are tailored to specific geographies within China, taking into account the vast array of climates and resources found across the country. The GBL rating system factors in six components, land efficiency, energy efficiency, water efficiency, resource efficiency, environmental quality and operational management.

Another symbol that adorns buildings across the city is the BREEAM stars. BREEAM originated from Britain and stands for the Building Research Establishment Environmental Assessment Method. BREEAM ratings are measured up to a maximum of six stars, with full marks earning an Outstanding rating. This all-encompassing evaluation system looks at a building's energy, health and wellbeing, innovation, land use, materials, management, pollution, transport, waste and water. You can find the BREEAM stars at the Jin Mao Office Tower and Landsea Green Life residential project in Changning District.

The most used and most recognized environmentally friendly building certification in the world is the LEED certification. The popularity of LEED, or the Leadership in Energy and Environmental Design, paved the way for the over 100 different certifications now found worldwide. You will find different colors of LEED awards. The rating system is evaluated on four tiers, from basic LEED Certified, LEED Silver, LEED Gold, to the highest LEED Platinum. In the beginning, the system was mainly known as a shorthand for measuring the energy efficiency of buildings, such as how much electricity is used and how much heat is lost. Now it has evolved to cover much more. Notable buildings you can find with LEED Platinum certification are the Shanghai Tower and the Starbucks Reserve Roastery, which are two among the 677 total LEED projects in Shanghai recorded up to 2020.

Along with the stalwart environmental certifications, new evaluation tools are being introduced as well. A new arrival to the certification world is WELL. Run by the International Well Building Institute, the WELL Health-Safety seal positions itself as a COVID-19 safety seal, taking into consideration our pandemic era concerns like air quality and cleaning, with a focus on people's health and wellbeing. The categories that WELL evaluates include the standard air and water quality, but they also add in holistic factors such as nourishment through quality food, the amount of natural sunlight, fitness options, comfort in the form of ergonomic chairs, and environmental effects on the mind and mood from factors like sound level. The WELL seal has already caught on in Shanghai at the serviced apartment Central Residences II.

Most brands that issue seals and certifications provide long lists of evaluation areas, which function as global industry standards. Although fulfilling only a portion of the criteria will still earn a seal of approval, the larger benefit is the increased importance of third party verification and accountability. A lot of work went on behind that plaque on the door, so you can breathe easy and rest assured the next time you spot one.





# base佰舍 | 滨江 BINJIANG



## DESCRIPTION

Perched on the shore of the Huangpu Binjiang waterfront with a panoramic river view of the Mercedes-Benz Arena and the China Pavilion. Base-BINJIANG is a five-minute walk from commercial centres, a 10-minute drive to popular shopping havens like Xintiandi, Dapujiao and The Cool Docks. There is also convenient transport via the North-South Elevated Road, metro lines 4, 8 and 13, along with Nanpu Bridge and South Xizang Road Tunnel, which go directly to the Pudong Expo Binjiang area and the Lujiazui CBD. There are 256 boutique apartments all equipped with under floor heating, and range from studios to three-bed apartments. Shared communal areas include a gym.



**ADDRESS:** 428 South Zhongshan 1st Road, Huangpu District  
**RENT RANGE:** 14,000-56,000 RMB per month  
**UNIT SIZE:** 46-223 sqm  
**TEL:** (021) 6278 8883  
**EMAIL:** enquiry.base@base-china.com  
**WEBSITE:** www.base-china.com  
**MINIMUM LENGTH OF STAY:** 1 Month



# base佰舍 | 复兴路 FUXING



## DESCRIPTION

Base-FUXING has creative workspace, upliving apartments, co-living community, F&B and new concept retail. Located in the heart of downtown and above Laoximen Metro Station of line 8 and 10, it is easily-accessible to popular spots such as Huaihai Road and Xintiandi. Base adopts advanced smart home technology to provide hassle-free living experiences. They aim to design the space in contemporary style, with careful consideration of functionality and bringing liveliness. Extraordinary hospitality service, multifunctional communal spaces, and gym are all available to fit your needs.



**ADDRESS:** 569 South Xizang Road, Huangpu District  
**RENT RANGE:** 21,000-45,000 RMB per month  
**UNIT SIZE:** 80-197 sqm  
**TEL:** (021) 6330 0931  
**EMAIL:** enquiry.base@base-china.com  
**WEBSITE:** www.base-china.com  
**MINIMUM LENGTH OF STAY:** 1 Month



# base佰舍 | 苏河 SUHE



## DESCRIPTION

Located downtown on the north bank of Suzhou River, base-SUHE integrates office space, retail shops and living spaces. Amongst them, there are 194 units of base-SUHE, with studios, one-bedroom, two-bedroom and other types of spaces to meet the needs of different people.

Combining office space, business space, functional areas and leisure spaces, base creates an organic urban community atmosphere. The community is formed of like-minded urban nomads who inspire one another and enjoy greater possibilities together.



**ADDRESS:** 518 Xinjiang Road, Jing'an District  
**RENT RANGE:** 12,000-26,000 RMB per month  
**UNIT SIZE:** 49-165 sqm  
**TEL:** (021) 6380 0108  
**EMAIL:** enquiry.base@base-china.com  
**WEBSITE:** www.base-china.com  
**MINIMUM LENGTH OF STAY:** 1 Month



# base佰舍 | 文定路 WENDING



## DESCRIPTION

Base-WENDING has 128 suites, including the studio, one-bed, two-bed, and hotel that can be flexibly changed to a double room, bunk bed studio and duplex one-bed. It is in a quiet and peaceful location amidst the bustling Xujiahui, with a high degree of livability and is conducive to business. An 80,000 person capacity stadium, Guangqi Park, a Catholic church and other attractions are within a 5-minute drive and the surrounding commercial facilities are well developed. Transportation is convenient walking to Yishan Road Station on metro lines 3, 4 and 9 and Shanghai Stadium Station on lines 1 and 4, as well as the elevated Inner Ring Road.



**ADDRESS:** 219 Wending Road, Xuhui District  
**RENT RANGE:** 7,000-25,000 RMB per month  
**UNIT SIZE:** 30-114 sqm  
**TEL:** (021) 3356 5686  
**EMAIL:** enquiry.base@base-china.com  
**WEBSITE:** www.base-china.com  
**MINIMUM LENGTH OF STAY:** 1 Month





# DISCOVER THE APPEAL OF MODERN AND SMART LIVING

## CENTRAL RESIDENCES II



Nestled within the historic neighbourhood of the former French concession on Huashan Road, Central Residences II epitomises cosmopolitan living. With exceptional hospitality from the tenant services team and upgraded facilities, discover the appeal of modern and smart living.

### Services at the Heart

Revel in comfort with the on-site facilities in Central Residences II and across the street at Central Residences I including an indoor swimming pool, jacuzzi, clubhouse access, basketball court, tennis courts, kid's Cozy Corner, a newly renovated private event space and an indoor yoga room.

Modern living is redefined with the use of smart technology throughout the property, allowing residents the ease of using facial recognition to pay for parking fees or to access the 24-hour gym with real-time air-quality monitoring systems.

A seamless stay awaits residents with a service team well equipped to take care of their needs with a 24-hour front desk, regular housekeeping, car rental services, taxi bookings, ticket bookings, newspaper subscriptions & delivery, in-house postal services, neighbourhood familiarisation tours, travel advice, monthly social calendar, emergency medical assistance, laundry & dry-cleaning, utility fee collection & remittal, restaurant & private club recommendations and reservations. Additional services are also on standby if needed for an extra fee such as temporary residence permit assistance, business centre services, secretarial service, babysitting service and private dining services.

### Recognized Living

The quality of life at Central Residences II exemplifies the high standards of service, comfort, and innovation. It is for this reason many well-known celebrities, international consuls general, diplomats and high investors of Fortune 500 companies call Central Residences II home.

Being proud recipients of the WELL Health-Safety Rated 2021 seal, residents can live more comfortably with state-of-the-art technology such as floor heating, air and water purifying systems and child-safety locks. The seal uses a scientific and systematic method to confirm that every system installed has met the international standard levels. From an air purification system to reduce respiratory particles that doesn't involve opening the windows, to ultraviolet disinfection, using cleaning products that comply with industry standards, and having corresponding quality inspection reports.

### Central Location

Central Residences II is surrounded by three major commercial centers of West Nanjing Road, Huaihai Road and Xujiahui. It is well connected to the Yan'an Elevated Road and near two major transportation hubs of Jing'an Temple and Xujiahui. Its conveniently located a short walk away from the vibrant retail and entertainment scene and steps away from some of the city's famous historical landmarks.

Located inside the Huashan Green Space within the cultural protection zone for old villas, expect to find your slice of urban oasis. Isolated away from city noises you can find peace and tranquility along the lush and leafy environment. The historic neighbourhood is iconic to Shanghai's over 100-year history as an affluent trading city with many international influences.



### About Central Residences II

The serviced apartment is a member of Kerry Properties. It has 214 units, with over 60 percent of units measuring over 200 square metres. Each unit comes with a fully functional kitchen and bathrooms. About a hundred children are counted as residents. These apartments have received many accolades for outstanding service and living environment including the 2020-2021 Luxury Living Awards for "Outstanding Environment Serviced Apartment" and "Most Anticipated Renovation Serviced Apartment."

### Central Residences II

**ADDRESS:** No.166, Lane 1038, Huashan Road, Changning District  
**TEL:** (021) 6226 6633





## CENTRAL RESIDENCES II

### DESCRIPTION

A beacon of modern living set in one of Shanghai's most charming, historic neighbourhoods, Central Residences II recently completed a full makeover. Consolidating 12 years of excellence, and looking ahead to the next decade and further afield, the residences by Kerry Properties - currently solely available for rent underwent a complete overhaul in their amenities and design, making them feel new all over again.

### FEATURES

The new bespoke services and amenities include under floor heating, air and water purifying systems, smart access controls and built-in child locks to prevent the little ones from causing havoc. Conceived with modern urban dwellers in mind, the apartment blends history, contemporary lifestyle and state-of-the-art services all in one.

### LOCATION

The location is near Yan'an Elevated Road and well linked to the city's transportation

system, surrounded by Jing'an Temple, Huaihai Road and Xujiahui. Both entertainment and retail options are just a stone's throw away by either a short 10-minute drive or a quick walk. It's also close to the green oasis that is Huashan Greenland, as well as other cultural landmarks and historic residential houses.

### SERVICES

24-hour Front Desk; Regular Housekeeping; Car Rental Services; Taxi Bookings; Messages; Ticket Bookings; Newspaper Subscriptions & Delivery; In-House Postal Services; Neighbourhood Familiarisation Tours; Travel Advice; Monthly Social Calendar; Emergency Medical Assistance; Laundry & Dry-Cleaning; Utility Fee Collection & Remittal; Restaurant & Private Club Recommendations and Reservations; Agency Services include: Temporary Residence Permit Assistance; Business Centre Service; Secretarial Service; Babysitting Service; Private Dining Services.

\*Some services are provided by a third party for an extra fee.



**ADDRESS:** No. 166, Lane 1038 Huashan Road, Changning District  
**RENT RANGE:** 33,000-130,000 RMB per month  
**UNIT SIZE :** 135-580 sqm  
**TEL:** (021) 6226 6633  
**FAX:** (021) 6226 8779  
**EMAIL:** centralresidences.SH@kerryprops.com  
**WEBSITE:** www.kerryprops.com  
**MINIMUM LENGTH OF STAY:** 6 Months







## FRASER SUITES TOP GLORY, SHANGHAI

### DESCRIPTION

At Fraser Suites Top Glory, Shanghai, each of the 185 gold-standard apartments, either two or three-bedroom, offer mesmerising views of The Bund and the city. Complemented by the chic and contemporary interiors for a truly enriching home experience.

### FEATURES

Fully furnished residences with separate living, dining, kitchen, and bedroom areas, air-conditioning with individually controlled thermostats, exclusive elevator access to apartments with a security key-card system, modern and well-equipped kitchens, comprehensive home entertainment systems, such as satellite & cable network television, DVD Player, LED TV, audio system, in-room electronic safe, etc.

### LOCATION

Fraser Suites Top Glory, Shanghai is just a stroll away from the city's landmarks

including Jinmao Tower, Shanghai International Financial Centre, Oriental Pearl TV Tower, and the Shanghai Tower. Being within walking distance from metro line 2 means getting to famous leisure spots such as People's Square, Xintiandi, and Yuyuan Garden is quick and easy. Airports and railway stations are also easily accessible via the inter-connected tunnels and highways.

### FACILITIES

Meeting Facilities, Extensively-equipped Gymnasium, Outdoor and Indoor Heated Swimming Pools, Music Therapy Room, Steam Room and Sauna, Tennis Courts, Children's Play Zone, Underground Private Parking Lots, etc.

### SERVICES

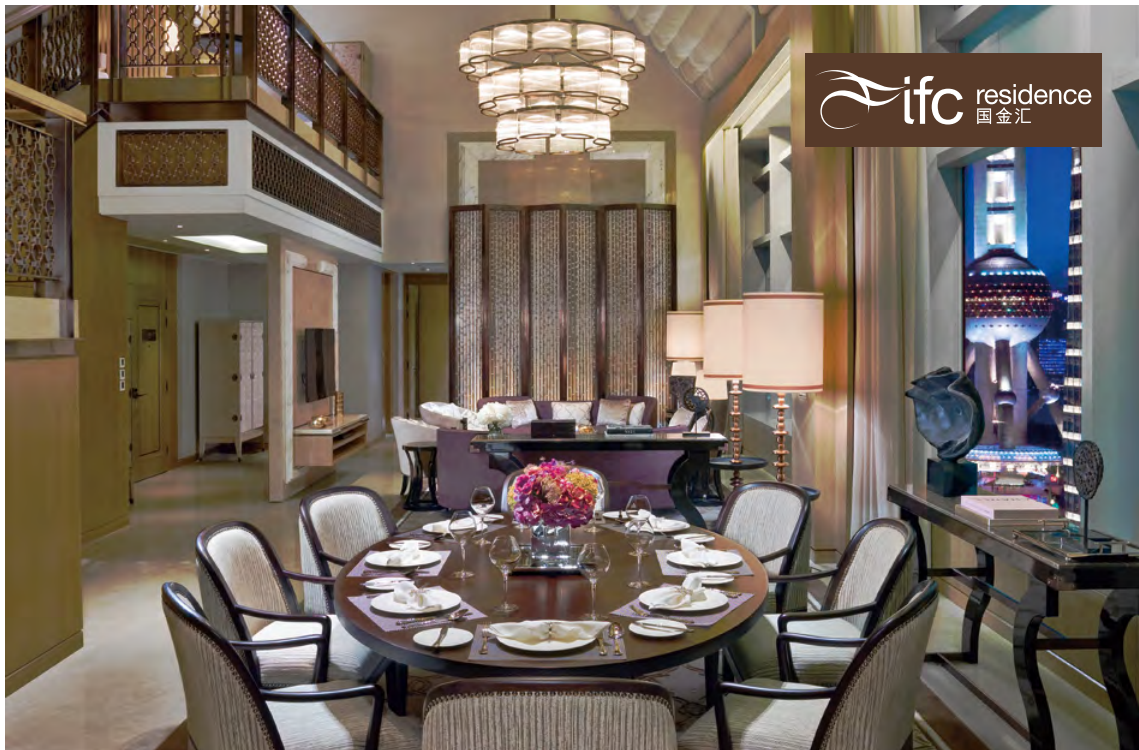
24-Hour Reception, Concierge and Security, Monthly Residents' Programs, Laundry and Dry Cleaning, Shuttle Services to Key Districts, Taxi and Car Rental Services.



**ADDRESS:** Lane 600, No.1 Middle Yincheng Road, Lujiazui, Pudong New Area  
**RENT RANGE:** 50,000-120,000 RMB per month  
**UNIT SIZE:** 211-360 sqm  
**TEL:** (021) 6378 8888  
**FAX:** (021) 5877 1928  
**EMAIL:** sales.fsshanghai@frasershospitality.com  
**WEBSITE:** <http://shanghai-suites.frasershospitality.com>  
**MINIMUM LENGTH OF STAY:** 1 Month







## IFC RESIDENCE

### DESCRIPTION

IFC Residence provides premium luxury living in Shanghai, offering five-star accommodation and service, while also utilising Sun Hung Kai Properties' reputation for developing high quality real estate in outstanding locations. As an integrated component of the Shanghai IFC complex, IFC Residence offers residents the unique opportunity to work, live, relax and play within the same development that has commercial office towers, a shopping mall, restaurants, superb service and facilities. Living in Shanghai has never been more convenient or luxurious.

### LOCATION

IFC Residence is located in the heart of the Pudong Lujiazui Business and Financial District. A unique location for business, shopping and entertainment. IFC Residence's location allows easy access to all parts of the city, by car or by metro. Hongqiao and Pudong airports are quickly reached via metro lines and freeways.

### FACILITIES

Central Air-Conditioning & Heating, Wifi Internet Access, Fully-Equipped Kitchen, Home Entertainment System, 25 Metre Indoor Heated Swimming Pool, Fully-Equipped Gym, Sauna & Steam Room, Indoor Children's Play Area, Meeting & Conference Rooms\*, Roof Terrace. \*with applicable charges

### SERVICES

24-Hour Reception, Daily Continental Breakfast \*, Housekeeping Service, Babysitting Service\*, Laundry & Dry Cleaning Service\*, Indoor Car Parking Spaces\*, Storage Locker\*, Limousine Service\*. \*with applicable charges



**ADDRESS:** 8 Century Avenue, Pudong New Area  
**RENT RANGE:** 30,000 - 200,000 RMB per month  
**UNIT SIZE:** 71-446 sqm  
**TEL:** (021) 2033 8888  
**FOR LEASE:** (021) 2206 9988  
**EMAIL:** ifcresidence@shkp.com.cn  
**WEBSITE:** www.ifcresidence.com



## JING'AN KERRY RESIDENCES

### DESCRIPTION

Sophisticated elegance awaits you at Jing'an Kerry Residences. As part of Jing'an Kerry Centre, with premium Grade A offices, an international shopping mall and the Jing An Shangri-La Hotel, residents enjoy all-weather access to a wide range of work and leisure options.

### FEATURES

The 133 fully furnished and equipped serviced residences offer spacious and convenient one-bedroom to three-bedroom apartments to suit your particular lifestyle needs. Jing'an Kerry Residences is ideal for international executives and families seeking the highest standards of service combined with the exclusivity of luxury living.

### LOCATION

Located just off West Nanjing Road, in Shanghai's cosmopolitan central business district, Jing'an Kerry Residences is connected to Shanghai's extensive metro network, with two international airports

- Hongqiao and Pudong - within an easy commute. The area's major transportation linkages bring the rest of China, and the world beyond to your doorstep.

### FACILITIES

Fully Furnished Residence with Separate Living, Dining, Kitchen, Bedroom Areas, Gym and Swimming Pool provided by Shangri-La Hotel Health Club.

### SERVICES

24-Hour Security and Multilingual Reception Services, Regular Residents' Activities, Housekeeping, Laundry and Dry Cleaning. Dedicated Residence Management.



**ADDRESS:** 1515 West Nanjing Road, Jing'an District  
**RENT RANGE:** 35,000 - 250,000 RMB per month  
**UNIT SIZE:** 76-396 sqm  
**TEL:** (021) 6279 1515  
**FAX:** (021) 6087 1955  
**EMAIL:** kerryresidences.SH@kerryprops.com  
**WEBSITE:** www.jingankerrycentre.com/residences  
**MINIMUM LENGTH OF STAY:** 6 Months







# KERRY PARKSIDE RESIDENCES

DESCRIPTION

Kerry Parkside Residences is part of Kerry Parkside, a 330,000 sqm mixed-use complex that includes a retail mall, serviced apartments, a five-star business hotel and Grade A offices.

The development consists of 182 fully-furnished and elegantly-designed premium residences spread across 28 floors. Apartments range from one-bedroom units to four-bedroom penthouses. Flexible lease terms are available for both short and long-term stays.

FEATURES

The luxury apartments at Kerry Parkside are ideally located to provide residents with a full spectrum of cultural, educational, and spiritual lifestyle choices.

LOCATION

Kerry Parkside Residences is located in Pudong, surrounded by green parks and spaces, and directly above a metro station on line 7. Century Park is within walking

distance, along with nearby entertainment and lifestyle districts, international supermarkets, restaurants and cafes.

FACILITIES

Access to Kerry Parkside Lifestyle Mall, Kerry Sports, Adventure Zone, Residents Lounge, and Underground Parking Lots.

SERVICES

24-Hour Reception, Security and Concierge Assistance, Resident Discounts at Hotel Restaurants, Beauty Salon, Regular House-keeping, Laundry and Dry Cleaning.



ADDRESS: 1398 Huamu Road, Pudong New Area  
RENT RANGE: 30,000-180,000 RMB per month  
UNIT SIZE: 112-650 sqm  
TEL: (021) 5033 2777  
FAX: (021) 5033 3123  
EMAIL: kpenquiry@kerry-props.com  
MINIMUM LENGTH OF STAY: 1 Month



# LE VILLE RESIDENCE SHANGHAI BIYUN

DESCRIPTION

Located in Jinqiao, Le Ville Biyun includes different architectural forms of apartments and villas. A total of 180 sets of diversified housing types can meet the needs of singles and families alike.

FEATURES

Le Ville Biyun offers a total of 28 fully-furnished townhouses plus 152 standard studios, and one and two-bedroom apartments, each complete with a spacious living and dining area, a fully-equipped kitchen, and broadband internet access.

LOCATION

Close to the modern Zhangjiang High-Tech Park, Jinqiao Export Processing Zone, and Waigaoqiao Free Trade Zone, Le Ville offers easy access to a myriad of restaurants, shops, entertainment outlets, and leisure spots.

FACILITIES

Intelligence Door Security System; 24-Hour Gym; Breakfast Restaurant; Laundry and Dry Cleaning Service; Satellite TV & IPTV; Siemens Fridge; Siemens Washing Machine; ACA Microwave Oven; Kohler Bathroom Accessories.

SERVICES

Twice a Week Housekeeping Service, Linen Replacement Services (excluding public holidays); Complimentary Internet Access; Complimentary Use of Gym Facilities; 24-hour Guest Service; Security & Engineer Courier Service; Luggage Storage Service; Restaurant Recommendation and Reservation Service, Car Booking Service (including Limousine, Private Cars, Airport Transportation, Taxis and more.)



ADDRESS: Lane 450, 15-16, Hongfeng Road, Pudong New Area  
RENT RANGE: 600-1,700 RMB per day; 10,000-35,000 RMB per month  
UNIT SIZE: 36-182 sqm  
TEL: (021) 3860 2288  
EMAIL: Leville.biyun@yango.com.cn  
MINIMUM LENGTH OF STAY: 1 Day







## LE VILLE RESIDENCE SHANGHAI JING'AN

### DESCRIPTION

Opened in October 2019, Le Ville Jing'an offers high-quality residences and excellent services. It has become the flagship project of the Le Ville brand. This residence is equipped with full-time guest and security services.

### FEATURES

Le Ville Jing'an offers 217 comfortable and serviced units that are intelligent and convenient. Each unit is equipped with compact kitchen supplies and comfortable bedding.

### LOCATION

Le Ville Jing'an is located at the Xikang Road and Changping Road crossing. Changping Road Station of metro line 7, the commercial area of Jing'an Temple and West Nanjing Road, and the famous Tonglefang, which is full of Shanghai culture, are all

within walking distance. Everything you need to experience Shanghai to the fullest is in easy walking distance of the apartments, from shopping to leisure, dining, and more.

### FACILITIES

Intelligent Door Security System; 24-Hours Gym and Yoga Room; Siemens Fridge; Siemens Washing Machine; Fatile Microwave Oven; Kohler Bathroom Accessory

### SERVICES


Twice a Week Housekeeping Service, Linen Replacement Service (excluding public holidays); Complimentary Internet Access; Complimentary Use of Gym Facilities; 24-Hour Guest Services; Welcome Amenities upon Arrival



**ADDRESS:** 663 Xizang Road,  
Jing'an District  
**RENT RANGE:** 13,000-25,  
000 RMB per month  
**UNIT SIZE:** 53-102 sqm  
**TEL:** (021) 3366 3666  
**EMAIL:** leville.jingan@  
yango.com.cn  
**MINIMUM LENGTH OF  
STAY:** 1 Month



**Follow Us For the  
Latest News and Events!**

*Follow us on*  
**WeChat** 



*Follow us on*  
**Instagram** 







# LANSON PLACE PARKSIDE, SHANGHAI

DESCRIPTION

Lanson Place Parkside, Shanghai is a contemporary retreat in the vibrant Huangpu District. With a modern and sophisticated interior design and Lanson Place’s impeccable guest service, Parkside serviced suites create a perfect home for guests who seek both convenience and tranquility in the bustling city.

FEATURES

Air-conditioning with individual controls, electronic key lock system, wireless broadband internet, fully-equipped kitchen, washer and dryer, dishwasher, LCD TV and home theatre system, satellite and cable TV, and a personal safe.

LOCATION

Located adjacent to Madang Road Metro Station, the property is easily accessible by public transport. It is also in close proximity to the city’s popular dining and entertain-

ment hub, Xintiandi, key financial district Lujiazui, plus world-class attractions and spots such as The Bund and Middle Huaihai Road.

FACILITIES

24-Hour Gym, Residents Lounge, and an Underground Car Park.

SERVICES

24-Hour Reception, Concierge, Housekeeping, Laundry and Dry Cleaning.



**ADDRESS:** 189-191 Xujiahui Road, Huangpu District  
**RENT RANGE:** 22,000-38,000 RMB per month  
**UNIT SIZE:** 73-148 sqm  
**TEL:** (021) 2330 9000  
**FAX:** (021) 2330 9001  
**EMAIL:** enquiry.pssh@lansonplace.com  
**WEBSITE:** parkside.lansonplace.com  
**MINIMUM LENGTH OF STAY:** 1 Month



# LANSON PLACE SUNLAND, SHANGHAI

DESCRIPTION

Lanson Place Sunland, Shanghai is the first high-end serviced apartment in Waigaoqiao Free Trade Zone. It provides a perfectly situated home away from home, close to malls, restaurants, an international school, and a cultural centre, designed to serve the wide community.

The property consists of 188 spacious units, ranging from studios to expansive three-bedroom suites. Comfortable, contemporary décor and furnishings are enhanced with landscaped gardens, a residents lounge, and a wide range of family-friendly facilities.

FEATURES

Air-conditioning with individual controls, electronic key lock system, wireless broadband internet, fully equipped kitchen, washer and dryer, dishwasher, LED TV and home theatre system, satellite and

cable TV, personal safe,etc.

LOCATION

Located close to Zhouhai Road Station on metro line 6, with excellent links to the city.

FACILITIES

Gym with Sauna and Jacuzzi, Residents Lounge, Business Station, Pool Table, Multipurpose Meeting Room, and Landscaped Gardens.

SERVICES

24-Hour Reception, Concierge, Housekeeping, Laundry and Dry Cleaning, Shuttle.



**ADDRESS:** Lane 1, 433 Qifan Road, Pudong New Area  
**RENT RANGE:** 11,500-40,000 RMB per month  
**UNIT SIZE:** 49-233 sqm  
**TEL:** (021) 2050 9595  
**FAX:** (021) 2050 9555  
**EMAIL:** enquiry.ossh@lansonplace.com  
**WEBSITE:** https://lansonplace.com/sunland/  
**MINIMUM LENGTH OF STAY:** 1 Month





**PRIMUS**  
RESIDENCE  
Shanghai Hongqiao  
上海虹桥绿地铂瑞公寓



## PRIMUS RESIDENCE SHANGHAI HONGQIAO

### DESCRIPTION

A combination of modern design and local characteristics, Primus Residence Shanghai Hongqiao creates warm and comfortable, home-like, travel and residential experiences by virtue of a cozy and luxuriant atmosphere. Exclusive fitness facilities and dividable conference rooms help occupants balance life and work. The uniquely designed library provides a quiet place for reading and social purposes, while the tranquil and warm Primus Lounge offers diversified breakfast to begin your energetic day.

### FEATURES

The warm color and design of solid wood, and the spacious and illustrious space, serves purposes of personal business, travel and family residence (a family of six members at the most). Each apartment has an all-ready kitchen with imported high-quality kitchen equipment, bathroom and electric appliances, an advanced A/

V system, central air-conditioning with independent temperature controllers and exclusive mattress and bedding from KING KOIL® help you sleep comfortably. "URBAN SCENTS", a German luxury brand, developed unique bathing and aromatherapy products for Primus.

### LOCATION

Adjacent to the National Exhibition and Convention Center Shanghai, Primus is only 2 km to Shanghai Hongqiao Railway Station, 2.5 km to Shanghai Hongqiao International Airport and 800 m walking distance to a metro station.

### SERVICES

Continental Breakfast, Extra Bed, 24-Hour Laundry and Valet Service, Weekly Fruit & Flowers, Airport Transfer\*, Limousine Service\*, Valet Parking Service, Library, Meeting Room, Secretarial Service\*, Fax, Copy & Printing Service\*. (\*on request)



**ADDRESS:** No.188, Lane 1588, Zhuguang Road, Xujing Town, Qingpu District  
**RENT RANGE:** 33,000-130,000 RMB per month  
**UNIT SIZE:** 158 guest rooms, including apartments for singles measuring 40 sqm, and three-bedroom apartments measuring 170 sqm  
**TEL:** (021) 3979 6888  
**FAX:** (021) 3979 6999  
**EMAIL:** resv.hongqiao@primushotels.com  
**WEBSITE:** www.gihg.com  
**MINIMUM LENGTH OF STAY:** 1 Night







# OAKWOOD RESIDENCE SHANGHAI

### DESCRIPTION

Comprised of 112 spacious and comfortable apartments, Oakwood is close to Zhongshan Park Business District. The studios, and one to three-bedroom units are ideal for short and long-term stays. With direct access to Imago Mall and an office tower, our residents enjoy a variety of wellness, entertainment and dining establishments. Located in Putuo District, the area is a main route in and out of Shanghai, with easy driving access to cities such as Suzhou and Hangzhou.

### FEATURES

Air-conditioning with individual controls, wireless broadband Internet, washer and dryer, dishwasher, coffee machine, LED TV and home theatre systems, stereo and DVD player, satellite and cable TV, personal safe, international direct dialing and switch-board facilities.

### LOCATION

Eight-minute walk to metro lines 3, 4 and 11, 30 minutes to Hongqiao International Airport and Hongqiao Railway Station, five-minute walk to Carrefour, direct access to Imago Shopping Mall and office tower, close to Zhongshan Park, Jing'an Temple and Jade Buddha Temple.

### FACILITIES

Business Centre Service, Fitness Centre, Oakleaf Restaurant, Residents' Lounge, Underground Parking, etc.

### SERVICES

On-site Management, 24-Hour Security and Customer Service, Concierge, Daily Housekeeping and Linen Change until 5 p.m., Daily Local Newspaper, In-room Tea/Coffee, 24-Hour Front Desk, Express Delivery Service.



**ADDRESS:** 103 Wuning Road, Putuo District  
**RENT RANGE:** 19,000-36,000 RMB per month  
**UNIT SIZE:** 83-189 sqm  
**TEL:** (021) 6183 0830  
**FAX:** (021) 6183 0829  
**EMAIL:** csr.resshanghai@oakwooda.com  
**WEBSITE:** www.oakwood.com/shanghai  
**MINIMUM LENGTH OF STAY:** 1 Day



# SHANGHAI CENTRE

### DESCRIPTION

Often called a city within a city, Shanghai Centre houses 365 serviced apartments, 30,000 sqm of prime office space, three levels of retail, a performance theatre and an exhibition space. The building was designed by renowned North American architectural firm John Portman & Associates, and marks their first in China.

The building has been a Shanghai landmark since it opened in 1990. Unsurprisingly, its residences, which include studios, one to four-bedroom apartments and luxurious penthouses, offer an unrivaled air of exclusivity and prestige.

### FEATURES

Individually controlled central heating and air-conditioning system, brand appliances, drinkable water supply, ample closet space, separate shower cubicle in the master ensuite, satellite TV with over 50 international and local channels, multiple service options for high-speed internet, in-room safe, etc.

### LOCATION

Situated in the heart of Shanghai's Jing'an District close to Yan'an Road, Shanghai Centre is walking distance from stations on metro lines 2, 7, 12, 13 and 14 (coming soon).

### FACILITIES

Indoor and Outdoor Swimming Pools, Terrace Garden, Supervised Kids' Club, Golf Simulator, Basketball Court, Business Centre, Post Office, Supermarket, Medical and Dental Clinic, International Banks, ATM, Pharmacy, Massage, Beauty & Hair Salon, Storage Lockers, and Underground Parking.

### SERVICES

24-Hour Security and Customer Service, International Management, Housekeeping, Access to the Ritz-Carlton Health Club, Weekly Resident Events, Laundry & Dry Cleaning, Shanghai Centre Privilege Card, Photo Services, Postal Services, Shoe Repair & Key Service, Tailor & Alteration Service.



**ADDRESS:** 1376 West Nanjing Road, Jing'an District  
**RENT RANGE:** 24,000-90,000 RMB per month  
**UNIT SIZE:** 47-320 sqm  
**TEL:** (021) 6279 8502  
**EMAIL:** leasing@shanghai-centre.com.cn  
**WEBSITE:** www.shanghai-centre.com  
**MINIMUM LENGTH OF STAY:** 1 Day  
**WECHAT ID:** Shanghai-Centre1990







# SHANGHAI HONGQIAO TONGPAI HOTEL

DESCRIPTION

Shanghai Hongqiao Tongpai Hotel offers serviced apartments, making a clever use of space to create impressive comfort. The style and design is contemporary minimalism, combining fashionable and industrial aesthetics. The apartments come fully furnished, and thanks to an ingenious floorplan, there is more than enough space left for storage and social activities. Professionally-minded millennials will have everything they need to feel at home during an extended business trip.

FEATURES

Tongpai is more than a hotel. It is a shared lifestyle that brings together a diverse and vibrant community. The serviced apartments adopt a flexible, subletting model.

LOCATION

Tongpai is right next to the Hongqiao CBD, the NECC Shanghai, and New Hongqiao

International Medical Center, as well as transportation hubs like Shanghai Hongqiao International Airport and Shanghai Hongqiao Railway Station.

SERVICES

Lounge (multi-functional public area); Living Room; Fitness Center; Laundry; Open Kitchen; Vending Machine; Delivery Robots; WiFi; Security Cameras; House-keeping; Courier Service; Free Parking.

Co-living facilities on site include living room, laundry, fitness center and open kitchen, and fully-equipped co-working space open 24/7. The communal kitchen creates a feeling like home. The shared living room's large and comfortable space allows you to spend time with friends in the community. The community fitness room welcomes you to stop by at any time. The smart laundry room is open 24/7 and is self-service to solve your laundry needs.



**ADDRESS:** 115 Minbei Road, Minhang District  
**RENT RANGE:** 9,000 - 18,000 RMB per month  
**UNIT SIZE:** 30 sqm & 64 sqm  
**TEL:** (021) 3328 8600  
**EMAIL:** maxine.wang@tongpaihotels.com  
**WEBSITE:** <https://tongpai-hotels.com/en/social-hq.html>  
**MINIMUM LENGTH OF STAY:** 30 Days



# STANFORD RESIDENCES JING'AN

DESCRIPTION

One of Shanghai's leading high-end serviced apartments, Stanford Residences Jing'an provides the comfort of a private home with the added luxury of hotel hospitality. Apartments include three-bedroom with one study, duplexes and penthouses with generous living spaces.

The apartments have large lounge areas and spacious balconies. The interior décor is fun, with playful art deco influences that create modern and trendy living spaces. Practical concerns are also well-noted. The living area is furnished with the latest in-home technology and a fully-equipped kitchen with German kitchen appliances.

FEATURES

Individually controlled air conditioning, wireless internet, IDD phones, under floor heating, contemporary lighting, fully-equipped kitchens, German kitchen appliances.

LOCATION

Short walk to Jing'an Temple Station on line 2. Thirty-minute drive to Shanghai Hongqiao International Airport. One-hour drive to Shanghai Pudong International Airport.

FACILITIES

Gym, Indoor and Outdoor Swimming Pools, Sauna Room, Children's Play Room.

SERVICES

24-Hour Front Desk, Concierge, Messaging Services, Regular Housekeeping, Travel Advice, Neighborhood Orientation Tours, Monthly Activities, Residents' Events, Restaurant Reservations, Residence Permit Assistance.



**ADDRESS:** Tower 1, 3, 16, 1999 Xinzha Road, Jing'an District  
**RANGE:** 43,500-150,000 RMB per month  
**UNIT SIZE:** 170 - 527 sqm  
**TEL:** (021) 8023 6288  
**EMAIL:** [leasing.jingan@stanfordresidences.com](mailto:leasing.jingan@stanfordresidences.com)  
**WEBSITE:** [www.stanfordresidences.com](http://www.stanfordresidences.com)  
**MINIMUM LENGTH OF STAY:** 12 Months







## STANFORD RESIDENCES XU HUI

### DESCRIPTION

Located in the heart of Shanghai's historic Xuhui District, Stanford Residences Xu Hui offers its residents excellent access to the city's transport system. There are 119 sets of luxury apartments including two-bed units, three-bed units, three-bed units with a study room, four-bed units with a study room, garden units and penthouse units. With "refined living" as a business philosophy, and following the design concept of "people-oriented", Stanford Residences Xu Hui combines modern style and functionality, with the aim of building an elegant and romantic living ambience that leaves one spellbound.

### FEATURES

Individually-controlled air-conditioning, wireless internet, IDD phones, under floor heating, contemporary lighting, fully-equipped kitchen, German kitchen appliances.

### LOCATION

Located in the heart of Shanghai's historic

Xuhui District, the property offers easy access to the city's transport system and a wide range of shopping, dining and entertainment venues. There is convenient access to Yan'an Elevated Road and North-South Elevated Road, in addition to metro lines 9 and 12.

### FACILITIES

Private Club House, Gym, Indoor and Outdoor Swimming Pools, Sauna Room, Reading Room, Common Room, and Children's Play Room.

### SERVICES

24-Hour Reception, Concierge, Messaging Services, Housekeeping, Orientation Tours, Residents' Events, Laundry and Dry Cleaning, Restaurant Reservations, Residence Permit Assistance, Babysitting, Business Services, etc.



**ADDRESS:** Tower 7-10, 268 West Jianguo Road, Xuhui District  
**RENT RANGE:** 43,500-130,000 RMB per month  
**UNIT SIZE:** 157-526 sqm  
**TEL:** (021) 8030 2038  
**EMAIL:** leasing.xuhui@stanfordresidences.com  
**WEBSITE:** www.stanfordresidences.com  
**MINIMUM LENGTH OF STAY:** 12 Months



## THE EMERALD

### DESCRIPTION

The Emerald is widely known as one of the most coveted addresses amongst the prime international villa compounds in Shanghai. Being the first choice of many Fortune 500 companies' senior executives and consular officials, The Emerald now is proud to host residents from nearly 40 countries.

Within the compound, the elegant North American style villas are all gateless and come with an open front yard, spacious back gardens, high ceilings, and large windows. The Emerald's location offers both the convenience and excitement of city life, as well as the tranquility and serenity of villa living.

### FEATURES

Villas are fully furnished, but tenants can also bring their own furnishings. Many are equipped with a water filtration system, home alarm systems, and fibre optic broadband connection.

### LOCATION

The Emerald is situated in Pudong Kangqiao New Development Zone, adjacent to the Outer Ring Road, 3 km from the Middle Ring Road, 26 km from Pudong Airport, and sitting between Shanghai Disneyland (9 km) and the new Qiantan CBD (10 km).

### FACILITIES

Two Fully-Equipped Clubhouses, Indoor and Outdoor Swimming Pools, Four Tennis Courts, Two Football Fields, Children's Indoor and Outdoor Playground, Café and Bakery Shop.

### SERVICES

24-Hour Security and Bilingual Call Centre, Dedicated Asset Management Team, Gardens and Pools Maintenance, Air Conditioning Maintenance, Regular External Wall and Window Cleaning, and Pest Control, etc.



**ADDRESS:** 2888 Hunan Road, Pudong New Area  
**RENT RANGE:** 32,000-60,000 RMB per month  
**UNIT SIZE:** 200-445 sqm  
**TEL:** (021) 6812 2222  
**FAX:** (021) 6819 2898  
**EMAIL:** marketing@shanghai-emerald.com  
**WEBSITE:** www.shanghai-emerald.net  
**MINIMUM LENGTH OF STAY:** 1 Year





# THERE IS NO BETTER PLACE TO CALL HOME

## TIMES SQUARE APARTMENTS



**ADDRESS:** 111 Middle Huaihai Road, Huangpu District  
**RENT RANGE:** 28,000-70,000 RMB per month  
**UNIT SIZE:** 96-239 sqm  
**TEL:** (021) 3122 8873/ 3122 8863  
**FAX:** (021) 3122 8872  
**EMAIL:** info@shtimesquare.com, vinisayu@shtimesquare.com  
**WEBSITE:** www.timesquareapartments.com.cn  
**MINIMUM LENGTH OF STAY:** 1 Month



Visit the Times Square Apartments virtual showroom by scanning the QR code.

For native Shanghainese, Mr. Li, the choice is obvious when it came to selecting a home for his family. As a professional investor, he lived in the Times Square Apartments in 2013 where he met his wife and welcomed two children, “the apartment has witnessed our love and the birth of our first child.” Li lived in the apartment until 2017 when he moved for family.

Last year, he decided to rent a serviced apartment again. After visiting many serviced apartments, he decided Times Square Apartments was by far the best match for his family. According to Li, “the service standard is excellent based on my prior living experience; the tenant services team is very personable and they demonstrate consistent, high quality service along with a warm and welcoming atmosphere.” With such a positive experience, he decided to have other members of his immediate family move in together with him, renting two units simultaneously on the same floor. “The location is convenient for my needs with access to major metro lines nearby and two major airports within a 30-minute drive, and the facilities suit the needs of my family. We enjoy the convenience of having a private gym and an outdoor pool, plus the fully-equipped kitchen and bathrooms. Having the staff, whether it is the front desk or housekeeping, know the preferences of my family makes our stay here feel like home.”



With his background as an investor, he “values the warm and detailed manner of the staff” mentioning that “these soft touches represent the unique culture of the company. This level of butler service is very hard to find in Shanghai. The reception and concierge service go beyond the market standard.” Li adds, “when we first moved in, they didn’t have two vacant units on the same floor. Luckily, after waiting for three months, swift arrangements were made to get the units we wanted.” He additionally praised, “even when I’m working outside, I can contact the staff directly for help.” They are always there for us and know the needs of all my family, taking care of us just like long-time friends.”

As a father of two children, “we appreciate the safe environment the apartment provides for my family. You can easily tell there was a lot of attention that was given to the design of the building and to each individual apartment unit, as if all our needs had been carefully anticipated.” Li plans to have his family live there continuously as they are accustomed to the neighbourhood, apartment facilities and the service staff. He finds it reassuring that so many of his friends also share this positive sentiment after visiting them. For him and his family, there is no better choice. Today, Li is now enjoying his 7th year living at Times Square Apartments, proudly calling it his home.

Within the heart of Shanghai’s vibrant shopping and entertainment district, Times Square Apartments’ location is unparalleled. Situated on the famous Middle Huaihai Road, it’s steps away from the historically significant Xintiandi which also offers luxury shopping, upscale entertainment, and plenty of dining options from fine dining to little eateries. The apartments are a stone’s throw from the iconic Shanghai Grand Theatre and the Shanghai Museum at People’s Square Park. For a family with kids, “the surrounding neighbourhood offers a safe and family-friendly setting you want for raising children. There are lots of places to visit and it is in proximity to some of the leading schools in Shanghai. We feel safe in the neighbourhood.”

The location also offers a good respite from the day-to-day business bustle. Nearby there are lush green areas which is ideal for urban strolls, the perfect activity with young children. Whether you choose to go on a leisurely walk along Hubin Avenue or within the leafy confines of Huaihai Park, there is a great balance between urban living and nature. “It is also a great location for runs,” adds an enthusiastic Li. “When I have the time, I enjoy running from our apartment to the Bund, it is roughly 5 km, or running to my parents’ home in the former Luwan District.”







**Times Square**  
APARTMENTS  
时代豪庭



## TIMES SQUARE APARTMENTS

### DESCRIPTION

Times Square Apartments is an upscale serviced apartment located on Middle Huaihai Road. It offers a sophisticated home that meets top executives' discerning needs for a restorative respite from their demanding work schedules. The Wharf Group has deep experience in serving international clientele. The apartments provide attentive and thoughtful award-winning service, creating a homey environment for all residents.

Times Square Apartments include everything from one-room units for couples or single occupants to three-room deluxe suites for bigger families. Timeless décor, tasteful furniture, well-equipped bathrooms and kitchens, with appliances sourced from around the world cater to the comfort of tenants of all ages and needs.

### FEATURES

Smart IC card access system, wireless broadband connection, large screen TV with DVD player, international and local satellite TV.

### LOCATION

Its central location means easy access to any part of Shanghai via Dashijie Station and Site of the First CPC National Congress - South Huangpi Road Station, both just a three to five minutes' walk, connecting to Metro Line 1, 8 and 14. Hongqiao Airport is a mere twenty-minute drive on the Yan'an Expressway, while the metro will take residents to Pudong International Airport in only 30 minutes.

### FACILITIES

Sauna and gym, outdoor swimming pool, lounge, tennis court\*, carpark\*

### SERVICES

Multilingual concierge team, comprehensive 24-hour security, thrice weekly house-keeping service, thrice weekly linen and towel replacement, daily complimentary breakfast, newspaper and magazines, valet laundry services\*

\*Additional service for an extra charge



**ADDRESS:** 111 Middle Huaihai Road, Huangpu District  
**RENT RANGE:** 28,000-70,000 RMB per month  
**UNIT SIZE:** 96-239 sqm  
**TEL:** (021) 3122 8873/ 3122 8863  
**FAX:** (021) 3122 8872  
**EMAIL:** info@shtimessquare.com, vinisayu@sh-timessquare.com  
**WEBSITE:** www.timessquareapartments.com.cn  
**MINIMUM LENGTH OF STAY:** 1 Month







WILLOWBROOK  
AT THE GREENHILLS



# WILLOWBROOK AT GREENHILLS

## DESCRIPTION

Escape from city crowds with a spacious five-bedroom villa at Willowbrook at Greenhills. These luxury villas offer not only generous living spaces within each unit, but also come with large private gardens set within an exclusive and secure compound.

Functional design features and details found within the villa interiors reflect the quality of these residences. Layouts maximize available space and ensure plenty of natural light. In the winter months, the residences are well-insulated from the weather with efficient energy features such as under floor heating and thermal windows.

## FEATURES

Central heating and air-conditioning, under floor heating, thermal windows, wireless internet, centralised water purification systems, water filtration, natural gas fireplace, well-equipped kitchen, dishwasher, satellite TV.

## LOCATION

Located in the Jinqiao Development Zone, next to many business and commercial hubs in Shanghai, Willowbrook at Greenhills is in close proximity to international schools in Pudong, a 20-minute drive from Lujiazui Financial District, and a walking distance to stations on metro line 2.

## FACILITIES

Gym, Indoor and Outdoor Swimming Pools, Tennis Courts, Children's Playground, Convenience Store.

## SERVICES

24-Hour Call Service, Maintenance and Repair Services, Community Services, Name Cards for New Tenants, Drinking Water Services.



**ADDRESS:** 418 East Jinxiu Road, Pudong New Area  
**RENT RANGE:** 70,000-85,000 RMB per month  
**UNIT SIZE:** 410-511 sqm  
**TEL:** (021) 6856 8888  
**FAX:** (021) 5030 2984  
**EMAIL:** [evan.kong@willowbrook.com.cn](mailto:evan.kong@willowbrook.com.cn)  
**WEBSITE:** [www.willowbrook.com.cn](http://www.willowbrook.com.cn)  
**MINIMUM LENGTH OF STAY:** 1 Year





# Hotels

## LUXURY LIVING

---



Find the views that take your breath away at  
The Ritz-Carlton Shanghai, Pudong.



# BREAKING THROUGH NEW FRONTIERS OF TRAVELLING

A WILD, LUXURIOUS WAY TO HOLIDAY.

By Sam Braybon



If you're a China travel junkie, a lot has changed in the past few years. Despite the complications and restrictions of the pandemic era, it's impossible to think of a better time to explore the plentiful travel destinations within China.

But there's genuinely something very different in the air these days. A few years back, a hot new hotel would have meant a show of stagy opulence with ostentatiously expensive design in a high-net worth neighbourhood with decadent dining options. Elegance was not exactly subtle.

Fast forward a few years and such venues just don't seem to excite people in the way they once did. Take Mark, for example. He's CEO of a Beijing-based investment bank and travel is typically one of his passions. "I'm not really that excited by five-star hotels in Shanghai anymore," he says. "They're very comfortable, but I stay in them a lot for work, and they are mostly quite similar."

Mark recently planned a special 50th birthday trip, hiring a high-end travel agency to plan a week-long extravaganza for ten friends that saw them travel along the Silk Road in northwest China's Gansu Province. "I had originally planned to go to Brazil, but for obvious reasons, that was not possible," he explains. "I'd never been to Gansu, and it seemed exotic to us. We wanted something a little bit wild and away from other people. We camped in a remote spot on the Tibetan Plateau and had a catered meal with champagne on top of sand dunes in the Gobi Desert. It was amazing and made me realize how incredible travel in China really can be."

This won't come as a surprise to anyone who frequents local social media, but it's pretty evident that traditional urban luxury is out, and China's remote western regions of Yunnan, Gansu, and Guizhou are very much in. With rugged mountain landscapes and traditional villages, they can offer the kind of exotic feeling that many travellers, in less restricted times, flew abroad for.

And this new love for all things natural explains, at least partly, how camping has emerged as 2021's hottest travel trend. But whereas Europeans might associate pitching a tent and spending a night under the canvas with an inexpensive and back-to-basics approach, young Chinese travellers have skipped that stage, turning this humble pursuit into something far more luxurious.

Glamping resorts are rocketing in popularity, so to snag a space at Norden Camp in Xiahe on Gansu's Tibetan Plateau, for example, you'll need to contact them several months in advance. The thirteen tents and huts there feature almost none of the amenities that you'd expect



of even a mid-range city hotel: there is no running water or Wi-Fi, and showers are taken in a communal block. But they do boast an incredibly photogenic location on sweeping grasslands covered in babbling brooks, an outrageously chic contemporary Tibetan aesthetic, and an army of staff to do all the hard work for you and that's why a night here starts from around 3,000 RMB, more than a standard room at almost any of Shanghai's top five-star hotels.

Others are pushing the boundaries further. Nomads Wild is a company that has taken inspiration from the luxury wilderness camps that have thrived in places like Africa for decades but never really made it to China. In fact, founder Shane Benis's original business plan involved taking high-end Chinese travellers to tented camps in Uganda, until the pandemic and a bit of inspiration struck, and he realized that the vast expanse of Gobi Desert that lay just outside the historic Silk Road in Dunhuang held equal potential.

This year the team held their first series of retreats, welcoming groups of 16 guests to a site 40 km from Dunhuang amongst soaring sand dunes, where stylish tents with a chic bedroom set up and full en suite bathrooms await. "The site is truly special," says Shane. "Sometimes in China you turn up to a resort only to find a huge building site or mess of power lines next door. But we're really in the middle of nowhere and that leaves a deep impression on guests." The site is so remote in fact, that a helicopter transfer is the best way to access it.

With a price tag of over 20,000 RMB per person, these three-day retreats are clearly targeted at well-heeled travellers, but the aim here is to provide a genuine once-in-a-lifetime experience. Each morning is kicked off by a meditation session with an experienced instructor, and other unique activities might include an expert-led stargazing session and a talk on the Silk Road from a top historian. "Our guests are truly amazing and tend to be quite self-selecting," says Shane. "They're all sophisticated travellers, the kind of people that are willing to get off-the-grid, take a bit of a risk and try something new." Still, with a top chef and a wine expert flown in from Shanghai, it sounds like attendees are in pretty good hands.

With the team currently scouring the country for new sites for potential camps, it seems safe to say that we can look forward to plenty more wildly creative and genuinely top-class travel experiences over the next couple of years, open borders or not.



**RESOURCES:**  
Norden Camp: <https://www.nordentravel.com/>  
Nomads Wild: <https://nomad-swild.com/>





# A NEW MOUNTAIN ESCAPE

LA VILLA BY LA MONTAGNE



**E**ddie Wong, general manager of La Montagne and La Villa by La Montagne, is at work building an exciting new hotel concept: transforming a whole mountain into a luxury forest community. The whole project will encompass two hotels, hundreds of residential villas, and a shopping center, all located within a 3-hour drive of Shanghai, Hangzhou, and Ningbo.

**You've had experience at various luxury brands throughout your career. Why did you join this project and what makes it unique?**  
At first, I thought this isn't like anything I've done before. I've always worked in city hotels. When I worked in resorts it was in Dubai and The Maldives, which are established destinations. So I came to La Villa with an open mind. After visiting, what really made me join was talking to the chairman, Mr Mingde He. Hearing his level of passion for this project, from a person who should be close to retirement, that was the first thing that captured my imagination. Then seeing the results of this place coming together in real time, seeing how beautiful it is and the potential, that made me want to join.

**What is the vision behind this project?**  
The vision for this whole project started with building a community. Mr He had this project called Yuchen, and its vision is to bring the city lifestyle into the mountains.



After having built some of the villas, he thought having residential is not enough. So that's when he thought, I need a hotel. I need infrastructure so that people can enjoy a lifestyle here, but at the same time, enjoy the convenience of shopping, eating, exercising, etc.

When I first came here it was for opening the La Montagne hotel, which is at the top of the mountain. We thought one hotel is not enough. Let's make it two. So we took 75 villas at the bottom of the mountain, and made those into another hotel, La Villa. Together with the villas, we built a beautiful building that includes a children's play area, mahjong rooms, snooker table, 3D golf, and an all-day dining complex, which can seat 200 people. Now we feel that the hotel is actually the main component of this whole project, because it brings the community to life.



**What do today's travellers look for and value in a hotel? How does La Villa appeal to them?**

When you look at value, it's not a dollar value. It's what an experience can bring you emotionally or through the heart. Coming here to the mountainous La Villa will bring a sense of relief. Because all travelling is domestic. People have already visited destinations like Sanya, Lijiang, Kunming, or Xiamen. Everybody is starting to look for something new and different. Having this resort here in Zhejiang, people will feel they can actually leave the city and go to a destination that they've never been before.

**What do you see as the future of hotel experiences and the future for La Villa?**

When I think of the concept of La Montagne and La Villa in the future, it has to be applicable to clients now. Travellers want a total experience. They want a traditional part that is comfortable, but at the same time they want something *wang hong*. It's a component where you can proudly show that you've been somewhere or are doing something different that others see and want to do too. When we built this hotel, we combined these factors together to make sure that guests have the traditional hotel feeling, but at the same time, there are different and new things that are appealing.



**ADDRESS:** Yushan Town,  
Pan'an County, Jinhua,  
Zhejiang Province  
**TEL:** (0579) 8466 9999







上海金茂君悦大酒店  
GRAND | HYATT  
SHANGHAI



# GRAND HYATT SHANGHAI

## DESCRIPTION

Grand Hyatt Shanghai is in the prestigious 88-story Jin Mao Tower, designed by world-renowned architects Skidmore, Owings and Merrill, in the center of the Lujiazui business and financial district. Occupying the 53rd to 87th floors, Grand Hyatt Shanghai features 548 rooms surrounding a spectacular 33-story atrium. The hotel is home to eight restaurants and bars, including the Shanghai restaurant Club Jin Mao, the award-winning dining destination ON56, and the Cloud 9 sky lounge, which provides spellbinding views from the 87th floor. Grand Hyatt Shanghai's extensive event and conference facilities include a Grand Ballroom for 1,200 people, a Crystal Ballroom and 13 meeting rooms. The hotel is 10 minutes from The Bund and Yuyuan Garden, and a 30-minute drive from Hongqiao International Airport or a 45-minute drive from Pudong International Airport.

## FEATURES

Featuring contemporary art deco touches combined with traditional Chinese imagery, the guestrooms are spacious and all have stunning views. All guestrooms have complimentary broadband and wireless Internet access, CAT 5 high-speed modem computer dataports, two-line telephones and a voicemail message system. The oversized bathrooms have separate baths and showers, feature high-tech shower-towers

with three shower heads and have heated mirrors in the shower cubicle (convenient for shaving while you shower), clear glass sinks and double-sided wardrobes. The hotel has 15 Grand Suites, 17 Grand Riverview Suites, eight Diplomat Suites, two Presidential Suites and one Chairman Suite. Exclusive Grand Club accommodation is provided at the top of the hotel, for business travellers seeking more personalised service. Services include all-day concierge, complimentary continental breakfast, evening cocktails served with hors d'oeuvres and coffee and tea in the comfort of the private two-storey Bund View Grand Club Lounge. An executive boardroom is available for Grand Club guests.

## FACILITIES

Grand Hyatt offers extensive event and conference facilities include the Grand Ballroom for 1,200 people, the Crystal Ballroom for 800 people and 11 separate meeting rooms, complemented by award-winning products and services, innovative food and beverage and commitment to excellence. The new Aquarius is the latest event space, a total area of 4,000 sq ft. it can host up to 180 guests seated and 270 for cocktails. With an extra bride room, the Aquarius Ballroom is also the ideal choice for hosting a sky-high wedding.



**ADDRESS:** Jin Mao Tower, 88 Century Avenue, Pudong New Area  
**TEL:** (021) 8024 1234  
**EMAIL:** shanghai.grand@hyatt.com  
**WEBSITE:** shanghai.grand.hyatt.com







# JING AN SHANGRI-LA, SHANGHAI

**DESCRIPTION**

Jing An Shangri-La, Shanghai has a total of 508 guest rooms, ranging from 42 to 311 sqm that occupy the top 29 floors of the 60-storey main tower, while restaurants, offices and retail shops are beneath. Guests can dine at CAFÉ LIANG, TSURU Japanese Restaurant, Summer Palace, or at The 1515 West Chophouse & Bar. A series of contemporary Chinese restaurants like Summer Palace provide a different dining ambience and menu. Outside on the piazza is Calypso Restaurant & Lounge, a modern Mediterranean restaurant and bar.

**FEATURES**

The hotel has collected 207 pieces of artwork, from 12 different countries. Two Chinese contemporary art masters were invited to create customised paintings. In addition, the silk carpets in the public areas and corridors are all handmade and correspond with the paintings. The interior decoration of the hotel's rooms is elegant and modern, reflecting the classic atmosphere of this international city.

**LOCATION**

Jing An Shangri-La, Shanghai is located in the Jing'an business district, one of Shanghai's most prestigious and fashionable areas. The hotel sits on a network of public transportation, including metro lines 2 and 7. It's a 45-minute drive from Pudong

International Airport and only 20 minutes from Hongqiao Airport via the adjacent Yan'an Middle Ring Road.

**FACILITIES**

For business or leisure, the hotel's dedicated and experienced staff caters to the needs of guests with an extensive range of facilities. The hotel offers high-speed wireless and wired internet access throughout all rooms and public areas. The Health Club features the latest training equipment, and a heated indoor 25 m swimming pool. CHI, The Spa spans eight treatment rooms. Here, skilled professional therapists will smooth any fatigued soul and restore energy. The hotel also offers 4,465 sqm of meeting and conference space, including a 1,743 sqm Grand Ballroom with a 10 m high ceiling. The hotel provides a 24-hour concierge, laundry and valet, airport transfer, suite butler, and more. In addition, the Horizon Club Lounge on the 55th floor and its complimentary services is available to hotel guests staying in the Grand Premier Room category and above. The spectacular 360-degree panoramic view from the lounge is the ideal place to soak up the city views. The award-winning Golden Circle loyalty programme ensures top-class services are verified by customer reviews. But what makes each stay memorable is Shangri-La's special kind of hospitality from the heart.



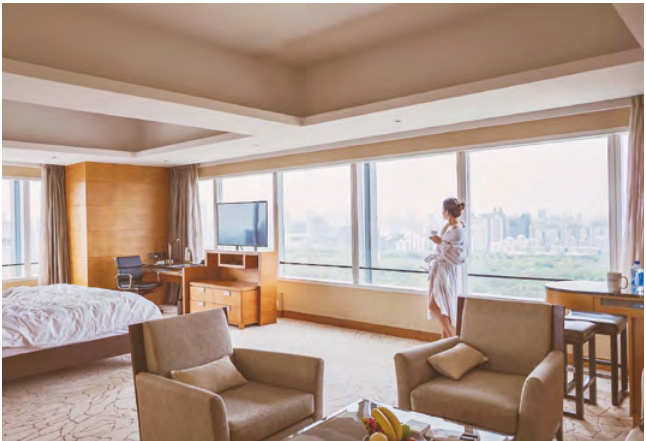
**ADDRESS:** 1218 Middle Yan'an Road, Jing'an Kerry Centre, Jing'an District  
**TEL:** (021) 2203 8888  
**EMAIL:** reservations.sljn@shangri-la.com  
**WEBSITE:** <https://www.shangri-la.com/jingan>







KERRY HOTEL  
Pudong, Shanghai  
上海浦东嘉里大酒店



# KERRY HOTEL PUDONG, SHANGHAI

## DESCRIPTION

Soaring 31 storeys over the Kerry Parkside complex in the heart of Pudong, Kerry Hotel Pudong, Shanghai has 574 rooms and suites, three restaurants, a business centre with serviced offices and meeting rooms, a 6,000 sqm sports club with wellness day spa and indoor children's playground, as well as one of Shanghai's largest portfolios of banquet and conference venues, including a 2,230 sqm pillar-free ballroom.

## FEATURES

Kerry Hotels are the next generation of luxury hotels, vibrant, unpretentious and flexible. They have a fresh and energetic vibe, and offer unexpected touches that fuel creativity yet allow time to recharge and relax. Service is less bound by protocol, but rather is enthusiastic and intuitive.

## LOCATION

The Shanghai New International Expo Centre, the city's largest trade exhibition venue at more than 300,000 sqm, connects directly to the complex via an enclosed footbridge. Across the street from Kerry Parkside lies Shanghai's largest public garden, Century Park.

## FACILITIES

Guests can have a gratifying work-out at

the well-fitted Kerry Sports. The indoor area boasts world-class training equipment and professional staff ready to offer health and fitness advice, while kids can enjoy the swimming pool and play in the rooftop area. With a vision of "exploring nature and leading a sports lifestyle", the hotel became the first of its kind to offer Snow51's indoor skiing and snowboarding experience. The hotel offers extensive event and conference facilities with more than 4,000 sqm of space for events and conferences, including a pillar-free ballroom, the Grand Shanghai Ballroom.

## SERVICES

The hotel is dedicated to accommodating families. Kids may enjoy the Adventure Zone indoor play area with slides and ball pools designed by British firm David Taylor Design, or participate in independent summer camps and the hotel's K20 program, which includes activities, to develop creativity, hands-on skills, teamwork, and ability to address challenges. As one of the pioneer hotels of Shangri-La Group, Kerry Hotel Pudong, Shanghai launched 'Family', a new experience for all generations to spend "We" time together and "Me" time pampering themselves. The hotel also has exclusive experiences for guests visiting the city.



**ADDRESS:** 1388 Huamu Road, Pudong New Area  
**TEL:** (021) 6169 8888  
**EMAIL:** shanghai@thekerryhotels.com  
**WEBSITE:** kerryhotels.com/shanghai







# PUDONG SHANGRI-LA, SHANGHAI

## DESCRIPTION

The five-star Pudong Shangri-La, Shanghai is a highly regarded deluxe property of Shangri-La Group, pioneers of Asian Hospitality. Comprising two towers - River Wing and Grand Tower - the hotel showcases spacious, well-appointed rooms and suites with views overlooking the historic Bund, the mighty Huangpu River, as well as of the futuristic Pudong financial district cityscape.

The hotel features 950 rooms and suites, a range of trendsetting designer restaurants and bars, comprehensive meeting and conference facilities with two ballrooms, CHI, The Spa, two health clubs, two swimming pools and a floodlit outdoor tennis court.

## LOCATION

Pudong Shangri-La, Shanghai is ideally located on the eastern bank of the famous Huangpu River, overlooking Shanghai's legendary waterfront strip, The Bund.

## FACILITIES

With a total over 8,000 sqm of versatile indoor and outdoor event space, Pudong Shangri-La, Shanghai is a preferred meetings and events venue.



The hotel offers nine well-known restaurants and bars. Gui Hua Lou is the award-winning Chinese restaurant that features Huaiyang cuisine. Jade on 36 Restaurant is a Michelin-listed restaurant with reinvented classic French cuisine, and which boasts panoramic views of the Bund. YICAFE is the international buffet restaurant with over 13 live cooking stations. While YISEA is a wonderful interpretation of the art of Japanese cuisine. Gourmet offers a fashionable selection of high-quality pastries, specialty breads, cakes, as well as seasonal items for celebration festivities.

Family-friendly facilities include the Kids' Activity Lounge that offers four themed rooms, namely the Archer Room, Slot Car Racing Room, Game Area and Toy Claw Room. Experience the thrills of Go-Karting with various speed choices for both adults and children, then pop over to enjoy a Kids Workshop and Handicraft Class. Finish the day off by cycling along the picturesque waterfront with your family or explore Shanghai on a bicycle.



**ADDRESS:** 33 Fucheng Road, Pudong New Area  
**TEL:** (021) 6882 8888  
**EMAIL:** shanghaipudong@shangri-la.com  
**WEBSITE:** <https://www.shangri-la.com/cn/shanghai/pudongshangrila/>







# RADISSON BLU FOREST MANOR SHANGHAI HONGQIAO

### DESCRIPTION

Radisson Blu Forest Manor Shanghai Hongqiao is modeled on the Alhambra style architecture in Spain. With elegant design and exquisite details, the hotel is filled with rich Mediterranean romantic atmosphere, which makes it a peaceful paradise in the bustling city.

### FEATURES

439 luxurious guest rooms and suites with natural daylight are exquisitely designed with classic furnishing. Boasting a picturesque view of the lush garden and river from the balcony, makes it a unique sanctuary to relax after a hectic day. Take time to enjoy a suite of leisure facilities available at the hotel.

### LOCATION

Located in the hinterland of Hongqiao Business District, within the Forest Manor International Community, the Radisson Blu Forest Manor Shanghai Hongqiao provides a relaxing environment next to the National Exhibition and Convention Center (NECC) and sites just three kilometers away from Hongqiao International Airport (SHA) and the high-speed railway terminal.

### FACILITIES

The hotel has 439 spacious guest rooms and suites, and 9 different styles to meet the needs of all guests. Three distinct and elegant restaurants and lounge are the Open Kitchen, Li Qing Chinese Restaurant and La Rosa. Recreation center is located on the ground floor of the hotel. The indoor area is more than 3,000 square meters. The Grand Ballroom has an area of about 1000 square meters and a height of 7.5 meters. The star banquet hall is in dome architectural style. 5 multi-functional meeting rooms, 2 boardrooms, and a business center, and are all equipped with modern facilities such as multimedia conferencing equipment and wireless internet.

### SERVICES

With the world-renowned Radisson hospitality and the unique "Yes, I can!" service philosophy, the hotel promises perfection in meeting all your business and leisure needs.



ADDRESS: 839 Jinfeng Road, Minhang District  
TEL: (021) 5329 8888







  
**RADISSON COLLECTION**  
YANGTZE SHANGHAI  
上海扬子江丽笙精选酒店



# RADISSON COLLECTION HOTEL, YANGTZE SHANGHAI

### DESCRIPTION

Conveniently located in the heart of the Hongqiao business district, experience the utmost style and elegance at Radisson Collection Hotel, Yangtze Shanghai. Guests can expect a welcoming atmosphere and attention to detail - a true Radisson Collection experience awaits.

### FEATURES

This modern 33-storey property features 527 spacious rooms and suites with city and park views, an indoor pool, fitness center, 2,000 sqm of event space, and six restaurants and lounges, including an authentic Cantonese restaurant. The Radisson is an exceptional destination for your business and leisure experience.

### LOCATION

The hotel is a mere 25-minute drive from the National Exhibition & Convention Center and Transportation Hub with Hongqiao Airport and the high-speed railway station. Within the immediate surroundings, you will find lifestyle shopping centres L'Avenue and The Place as well as key office towers. Metro line 10 is just across the adjacent park and takes you to Xintiandi in downtown Shanghai within 15 minutes. Line 2 and Line 15 are also within walking distance.

### FACILITIES

The Yangtze Conference Center has over 2,000 sqm of banquet space including one spacious ballroom complete with built-in LED video walls of the latest P2.5 standard, two striking medium-sized ballrooms and six flexible function rooms which will make an impression on any guest attending your event. Six restaurants including an award-winning Chinese restaurant serving authentic Cantonese cuisine and dim sum in elegant surroundings. Located on the second floor of Radisson Collection, Yangtze Shanghai, Li Jin Xuan has been artistically designed with contemporary architectural style and an eastern aesthetic decoration to create an intimate, graceful, and tranquil atmosphere. The hotel's recreational facilities include an indoor heated swimming pool, fitness studio, and a spa, situated a stone's throw from the hotel.

### SERVICES

Wi-Fi, Grab & Go, Buffet Breakfast, House-keeping, Laundry, Fitness Center, 24/7 In room Dining, All-Day Dining World Cuisine Restaurant Yangtze Café, Two Chinese Restaurants: Li Jin Xuan offers Cantonese Cuisine and Food Pavilion offers Shanghainese Cuisine, One Lobby Lounge - The Hub offers various soft drinks and high standard afternoon tea sets.



**ADDRESS:** 2099 West Yan'an Road, Changning District  
**TEL:** (021) 6275 0000  
**EMAIL:** info.yangtze@radissoncollection.com  
**WEBSITE:** <https://radissoncollection.com/yangtze-shanghai>







# SHANGRI-LA QIANTAN, SHANGHAI

**DESCRIPTION**

Shangri-La Qiantan, Shanghai, is located in Pudong. Together with Taikoo Li Qiantan and New Bund Centre, Shangri-La Qiantan forms The New Bund International Business District that integrates offices, retail, hotels and other functions. With 585 guestrooms, four speciality restaurants and bars, a 2,000-sqm wellness club and 7,000 sqm of meeting and event space, the hotel is well-positioned to cater to the needs of all guests.

**FEATURES**

The hotel was designed by international studios Ga, STACK, Takenouchi Webb and HBA. The design has elements of Shanghainese culture and “green nature”, combining them to create a sensory experience. The screen doors, walls and art objects showcase traditional Shanghainese architecture like Shikumen. The 1st floor has the bar and on the 7th is an open green space. This urban oasis brings guests closer to nature, giving them a feeling of tranquility.

**LOCATION**

Shangri-La Qiantan is across from West Bund, a 15-minute drive from People's Square, and 30-40 minutes away from Hongqiao and Pudong International Air-



ports. Metro Lines 6, 8 and 11 are a short walk away. Other public transportation facilities are being planned like the Bus Rapid Transit (BRT), a cross-river tunnel and the Qiantan Station of Metro Line 19.

**FACILITIES**

It is the perfect destination for any gourmet traveller. QT Kitchen, the hotel's all-day dining restaurant, features stations serving international delicacies. At the Shangri-La Jiangnan Wok, guests can enjoy new Huaiyang cuisine in a luxurious setting. Set on the first floor, GardenLab is a tranquil space that brings to mind a botanical garden. Relax with signature herb-inspired cocktails, a large selection of fine wines, and a curated list of beverages. QT Lounge is the perfect place to enjoy premium teas, coffees, and house-made pastries.

**SERVICES**

Shangri-La Qiantan is the 4th Shangri-La hotel in Shanghai following Pudong Shangri-La, Jing An Shangri-La and Kerry Hotel Pudong. Shangri-La Qiantan creates a unique sensory experience, all while delivering the distinctive heartfelt hospitality Shangri-La has been known to provide for 50 years and counting.



**ADDRESS:** 551 West Haiyang Road, Pudong New Area  
**TEL:** (021) 5030 8888  
**EMAIL:** shanghaiqiantan@shangri-la.com  
**WEBSITE:** <http://www.shangri-la.com/cn/shanghai/qiantanshangri-la/pre-opening/>







THE MIDDLE HOUSE  
SHANGHAI



# THE MIDDLE HOUSE

## DESCRIPTION

In collaboration with NEIWAI and 10/10 HOPE, The Opposite House in Beijing, The Middle House in Shanghai, and The Temple House in Chengdu of The House Collective by Swire Hotels have joined together to present the “Sleep Therapy” exclusive suite. Inspired by the three Houses, the special suite brings guests on a journey through the five senses to provide an escape from the city’s hecticness to relax through sleep therapy.

## THE MIDDLE HOUSE – “BAMBOO MELODY” SLEEP THERAPY SUITE

Inspired by the intimate sanctuary of The Middle House, the suite uses light green as its main colour tone, emphasising the ambience of a bamboo forest. The classic cosy pajama set is a perfect interpretation of silkiness with the wool-extracted keratin added into the fibers bringing extra smoothness while the satin patchwork gives out a soft glow. Indulge in this silky touch and slide into a sweet dream. Featuring KERZON’s Fragranced Candle, the refreshing scent of plants sweep away the boredom of the never-ending summer and brings a sense of elegance and relaxation. The Bamford Rosemary Willow Diffuser, infused with Sicilian lemon and geranium, naturally delights and warms the space with hints of clove, rosemary, thyme and lavender, allowing the guest to return to

nature, while peacefully drifting off into sweet dreams.

## LOCATION

Located in the bustling Jing’an District of Shanghai and the city’s trendy West Nan-jing Road, The Middle House is the newest addition to Swire Hotels’ renowned The House Collective, offering 111 luxuriously designed guest rooms and 102 serviced residences for discerning world travellers. Enlisting Italian designer and architect Piero Lissoni to bring his signature mix of bold lines and clean silhouettes into every detail, The Middle House offers many unique features, including an expansive outdoor space with terraces that provide an elegant and calm oasis amidst the dynamic backdrop of one of Asia’s most sophisticated cities.

## FACILITIES

The Middle House also presents a mix of cuisines and dining options with three gourmet restaurants and bars. Café Gray Deluxe - contemporary European cuisine; Frasca - modern Italian eatery; Sui Tang Li - contemporary Chinese restaurant. Spread over 2,600 sqm, Mi Xun Spa features a beautiful indoor heated swimming pool, 24-hour gym facilities complete with a wellness studio, group yoga sessions for all your lifestyle needs, and Cha Ling and Gemology treatments.



**ADDRESS:** 366 Shimen 1st Road, Jing’an District  
**TEL:** (021) 3216 8199  
**EMAIL:** reservations@themiddlehousehotel.com  
**WEBSITE:** <https://www.thehousecollective.com/en/the-middle-house/>







THE PORTMAN RITZ-CARLTON  
SHANGHAI

# THE PORTMAN RITZ-CARLTON, SHANGHAI

DESCRIPTION

The Portman Ritz-Carlton, Shanghai is a 593-room luxury hotel located in the Shanghai Centre retail, dining and entertainment complex on Nanjing West Road. Situated in the heart of the commercial, shopping and entertainment district, the hotel features unparalleled service.

SERVICES

On the 43rd floor, the Club Lounge has a buffet area, lounge section, business corner and meeting room. Guests enjoy privileges to feel at home, such as complimentary pressing service, local calls and internet connectivity, business center, and complimentary private meeting room. Guests can request barista-made coffee or tea, served direct to guestrooms at any hour. For travelers seeking something local, the weekly experiential event invites local masters of different activities. The Ritz Bar & Lounge is inspired by Shanghai's glamorous 1920s and '30s mood. A four-story-high ceiling cascades into a dramatic curtain glass wall beneath which stands a chic island bar. Art Deco motifs and contemporary design elements are mixed with flair characteristic of the Pearl of the Orient. Portman's Restaurant features favorite dishes with a creative twist. New signature dishes high-



light continental and Pan-Asian inspirations, all prepared by a first-class culinary team. Terrace 8 is back for the public, with laidback vibes and a sweeping view facing the historic Shanghai Exhibition Centre. Whether you're having tasty afternoon tea on a grassy lawn with fresh air and sunshine, or a glamorous view as you sip on Champagne or cocktails with Mediterranean inspired tapas, Terrace 8 is an oasis for alfresco dining and private parties.

Thirteen function rooms can be tailored to match needs. A 170 sqm residential hospitality suite is perfect for exclusive events up to 30 guests. Club Level guests desiring privacy can book the Club Level boardroom for meetings. Shen Ballroom is an impressive venue for conferences, seminars and board meetings. Featuring a spacious pre-function area, the Ballroom can be divided into three individual rooms. Including a 904 sqm atrium and a 991-seat theater, the combined space of 5,636 sqm provides a suitable multi-functional venue for conferences, exhibitions and gala dinners. The Health Club provides dynamic programs and packages. Relax, re-energize and reach your fitness goals with a full range of training machines, indoor and outdoor aqua facilities, and special classes.



**ADDRESS:** 1376 West Nanjing Road, Jing'an District  
**TEL:** (021) 6279 8888  
**EMAIL:** [sharz.lead@ritzcarlton.com](mailto:sharz.lead@ritzcarlton.com)  
**WEBSITE:** <https://www.ritzcarlton.com/en/hotels/china/shanghai>







THE PULI  
HOTEL AND SPA



# THE PULI HOTEL AND SPA

## DESCRIPTION

From the moment you enter the lobby, and throughout your stay, The PuLi Hotel and Spa will transform your expectation of luxury. As one of the first luxury urban resorts in Shanghai, The PuLi is centrally located between West Nanjing Road and Yanan Road, adjacent to the multi-use development Park Place. The PuLi is committed to delivering handcrafted luxury. The hotel's guest experience is a departure from the generic style of luxury found in conventional hotels. Imbued with contemporary elements and accents of traditional Asian charm, the result is a distinctive, new spatial and guest experience in this oasis within the metropolis. The PuLi is managed by Urban Resort Concepts.

## FEATURES

Whichever room you choose during your stay, you will discover the sense of luxury, comfort and attention to detail that embraces the hotel's duality of contemporary, handcrafted luxury with carefully selected furnishings of historic reference.

## LOCATION

The PuLi Hotel and Spa is China's first luxury urban resort, centrally located in the heart of Jing'an District. The 26-floor hotel has a prime location close to some of Shanghai's best business, shopping, sightseeing and entertainment areas and

is accessible via transportation, including subway Line 2 connecting Pudong International Airport and Hongqiao Airport, and Line 7.

The views from The PuLi take in the greenery of Jing'an Park. The hotel is conveniently located next to the multi-use development Park Place, a business landmark comprising a premium office tower and the Reel Department Store.

## FACILITIES

The PuLi has 193 rooms and 36 suites, and offers 24-hour dedicated guest service specialists, in-room dining, concierge, laundry and valet services, and a Michelin restaurant. The Health Club is equipped with a state of the art gymnasium, sauna, steam room, experiential showers, whirlpool, 25-m heated infinity pool as well as the inaugural UR SPA in China.

On Level 1 is the Garden Terrace, while Level 2 has the all-day dining restaurant and private dining room. Level 3 has meeting rooms, and Level 26 offers multifunctional space where one can host exclusive and intimate events for up to 150 guests.

## SERVICES

Each room offers state of the art technology, 24-hour in-room dining concierge service, laundry and valet services.



**ADDRESS:** 1 Changde Road, Jing'an District  
**TEL:** (021) 3203 9999  
**EMAIL:** sales@thepuli.com  
**WEBSITE:** www.thepuli.com







THE RITZ-CARLTON

SHANGHAI, PUDONG



# THE RITZ-CARLTON SHANGHAI, PUDONG

## DESCRIPTION

The Ritz-Carlton Shanghai, Pudong, opened on 21 June 2010, is the luxury hotel brand's second hotel in the city, and its seventh in China. Located in Shanghai ifc, the prime real estate location in the Lujiazui financial trade zone, the hotel and the entire complex is the masterpiece of world famous architect and designer, Cesar Pelli.

"The Ritz-Carlton Shanghai, Pudong is an integral feature of Shanghai ifc, developed by Sun Hung Kai Properties, one of Asia's leading property developers with proven excellence in creating world-class mixed use developments incorporating luxury retail, office, residential and hotels as the company's ifc and ICC in Hong Kong have demonstrated. It is a great honor for us to partner with Sun Hung Kai Properties to build and develop this iconic hotel in Shanghai," commented Mr. Christian Humbert, General Manager of The Ritz-Carlton Shanghai, Pudong.

The 285-room Ritz-Carlton Shanghai, Pudong is Shanghai's ultimate destination for luxury and style and occupies the top 18 floors of the Shanghai ifc South Tower. Opened in June 2010 during the World Expo, the design and style of the hotel is contemporary with hints of new interpre-

tations of 1930's Shanghai Art Deco. This gives a great sense of place to the hotel as guest rooms and restaurants embrace magnificent sweeping views over The Bund - the most intact collection of Art Deco architecture anywhere in the world.

With interior designs by Richard Farnell, The Ritz-Carlton Shanghai, Pudong's guest rooms and suites range in size from 50 sqm to 410 sqm, for the palatial Ritz-Carlton Suite and Chairman Suite. There are three floors of Club accommodation and each club room enjoys access to the hotel's stunning Club Lounge on the 49th level, which is open 24 hours a day.

The Ritz-Carlton Club Lounge features floor-to-ceiling windows, offering magnificent views of The Bund and Huangpu River. This exclusive area comprises a buffet area, a sofa lounge section, two work stations and two meeting rooms. Appealingly furnished interiors provide a perfect backdrop to enjoy martinis at the bar sitting area or experience the unmatched culinary distinction of the hotel's chefs through five food and beverage presentations daily.

The food and beverage presentations are one of the prime attractions of staying on



**ADDRESS:** Shanghai IFC, 8 Century Avenue, Lujiazui, Pudong New Area  
**TEL:** (021) 2020 1888  
**EMAIL:** rc.shasz.leads@ritzcarlton.com  
**WEBSITE:** <https://www.ritzcarlton.com/en/hotels/china/shanghai-pudong>





the Club level. Hot breakfast buffets with an array of typical morning fare of cereal, pastries, fresh fruit, local delicacies and live cooking. At lunchtime, small sandwiches and tasty salads are served. Afternoon tea is a respite from the day with three-tiers of scones, finger sandwiches and desserts with an extensive choice of international tea selections. When the work or play day is over, The Club invites guests for a Caviar Tasting every Friday at 6 p.m. where the culinary team will present a selection of refined caviar canapés. Before retiring for the evening, The Club also features cordials and chocolates.

**FACILITIES AND SERVICES**

This hotel offers a host of exquisite luxury restaurants and a bar with unrivalled views over The Bund and the Shanghai skyline. Restaurants include Aura Lounge and Jazz Bar, Jin Xuan the fine dining Chinese Restaurant designed by Steve Leung, Scena Italian Restaurant and Flair Rooftop Restaurant and Bar both designed by the world famous Super Potato. Flair is Shanghai's highest al fresco dining and wining venue, and is destined to be the unique new social center of Pudong and the city.

Featuring more than 2,500 sqm of meeting and conference space on the third level including a 1,135-sqm Grand Ballroom, the second largest ballroom among the city's luxury hotels, The Ritz-Carlton Shanghai, Pudong can accommodate large and small meetings and gatherings in sumptuous environments with world-class technology and facilities underscored by The Ritz-Carlton legendary service. All meeting spaces offer floor-to-ceiling windows and natural daylight.

Located on the hotel's 55th floor and occupying an area of more than 1,500 sqm, The Ritz-Carlton Spa features 10 treatment rooms, including nine multi-function treatment rooms and a Harmony Suite where two guests may relax and enjoy treatments together. The Ritz-Carlton Spa combines the essence of ancient and modern Chinese, Indian, European and Balinese spa cultures. The exquisite collection of treatments represents complete care, personalization and the ultimate in luxury.

**JIN XUAN CHINESE RESTAURANT**

Ascending to the 53rd floor, the elevator passes through the promenade before arriving at the restaurant's luxurious retro lobby. The floral background lights and wisteria reflect each other, and the two-seater small round tables are interlaced on the arc-shaped decks. As the proud work of Hong Kong architect Steve Leung, Jin Xuan's interior design is sophisticated in every respect. Located in an area with a complete view of the Bund, the interior decoration and the beautiful scenery of Shanghai are mutually radiant and vibrant. It is an ideal choice for social celebrities and business stars of the city.

As a "cloud restaurant" specializing in authentic Cantonese cuisine, Jin Xuan has taken great pains



to set various menus. Here, experienced chefs take different taste preferences into account, and the good Cantonese flavor touches all taste buds in the cloud. In addition, the subtlety of Jin Xuan lies in its exquisite attention to the Chinese tea ceremony. Depending on the dishes ordered by the guests, it provides the most appropriate tea mix and serves it in hot pots.

A representation of one of the most famous Chinese paintings, "The Night Revels of Han Xizai," adorns one wall of the restaurant. As a serial handscroll, the original painting depicts the Han Xizai family having a banquet in the Southern Tang Dynasty. To avoid the suspicion of Li Yu, the last emperor of the Southern Tang Dynasty, Han Xizai held the banquet every night. The picture depicts the whole process of a banquet in Han's home. Artisans etched an enlarged copy of the painting onto glass to emphasize the excellence of Jin Xuan as a place to entertain guests and friends. "The Night Revels of Han Xizai" is not just decoration. It also serves as the door to a large wine cabinet, which is neatly lined with more than 360 kinds of wine and a total of more than 2,000 bottles.

The hall of Jin Xuan can accommodate 52 guests for dining at a time. In addition, there are eight private rooms that can accommodate a minimum of six to a maximum of 40 guests.

**AURA LOUNGE & JAZZ BAR**

Located on the hotel's 52nd floor lobby level is Aura Lounge & Jazz Bar. Its contemporary décor with small nuances of Art Deco influenced furnishings and art pieces pays homage to the flamboyant era spanning 1920s and 1930s in Shanghai - the golden age of the city.

Aura is an ideal venue for enjoying a relaxing get-together with friends or meeting business acquaintances over seasonal afternoon tea sets. Dimly lit with awe-inspiring views over the Shanghai skyline, in the evening the mood is more romantic as live Jazz is played. The lounge area of Aura can seat up to 105 guests, with a further 10 at the bar counter.

**EXPERIENCE THE UNEXPECTED IN THE MIDDLE OF THIS VIBRANT CITY**

The all-new Ritz Kids Night Safari taps into a child's inquisitiveness, creative spirit, and thirst for new adventures, making for an unforgettable holiday experience. The Ritz-Kids Night Safari brings the great outdoors inside by allowing the kids to set up camp in the guest room. The special amenities will liven up the night for the little ones, while parents sleep easy.





# WALDORF ASTORIA SHANGHAI ON THE BUND

## DESCRIPTION

Located at No. 2 The Bund in the former Shanghai Club, the Waldorf Astoria Shanghai now occupies the building built in 1910, and the adjacent new Waldorf Astoria Tower. The Tower rises 24 floors, allowing guests spectacular views of The Bund, the Huangpu River and the Pudong skyline. Connecting the two buildings is Peacock Alley, an elegant promenade of restaurants and lounges overlooking a landscaped courtyard. Just like its New York counterpart, the 260-room Shanghai hotel combines vintage European-style splendour with true Waldorf service and classic comfort. An array of three restaurants, two lounges and a bar epitomize fine dining and chic socializing. There's all-day dining and authentic Chinese and French specialties. For light meals, meetings-over-drinks and afternoon teas, the two lounges and Peacock Alley are ideal. The Long Bar, the once the longest bar counter in the Far East, is perfect for business entertaining and relaxing in the evenings.

## FEATURES

The Waldorf Astoria has occupied the historic No. 2 since late 2010. In the Long Bar, the elegant hallways, the old reading room turned Salon de Ville, the loft space, now Wei Jing Ge restaurant, and the billiard

room that today is the Pelham's restaurant, life was breathed into every element without compromising historical integrity.

## LOCATION

The hotel is at the heart of The Bund. It's easily accessible by subway and directly linked to Yan'an Road, which tunnels under the Huangpu River to Lujiazui. Nanjing Road, a centre of retail for more than a century, is within walking distance.

## FACILITIES

For guests seeking to relax, the Waldorf Spa is located in the Tower and features an indoor heated lap pool with lounge area, and a steam room and sauna. Skilled consultants offer a range of premium health and beauty treatments. The Fitness Centre boasts state-of-the-art equipment. The hotel hosts conferences and meetings. The historic European-style ballroom offers configurations for large or small events, with floor-to-ceiling French windows.

## SERVICES

The hotel is committed to its motto "Live Unforgettable" and seize every precious moment in life. From the concierge to the service staff, every employee plays an integral role in ensuring guests have an unforgettable stay. No detail is overlooked.



**ADDRESS:** No. 2 East Zhongshan 1st Road, Huangpu District  
**TEL:** (021) 6322 9988  
**EMAIL:** shawa.info@waldorfastoria.com  
**WEBSITE:** www.waldorfastoria.com/shanghai  
www.waldorfastoria-ashanghai.com





ANDAZ XINTIANDI, SHANGHAI

Andaz Xintiandi, Shanghai is located in the heart of Xintiandi, Shanghai's famous entertainment, shopping and commercial district. The Xintiandi area retains the antique walls, tiles and façades of the traditional shikumen (stone-gate) houses of old Shanghai, while the interiors showcase prestigious modern brands, fashion boutiques, restaurants and bars, creating a landmark destination that combines the historical and cultural identities of the city. Being modern and approachable, Andaz offers an experience that carefully blends high-tech and high-touch. The hotel streamlines everything from check-in to in-room entertainment with technology that allows guests to tailor their experience to their individual needs. Service is personalized and friendly, offering gracious one-on-one attention in a warm and relaxed hotel environment.

**ADDRESS:** Andaz Xintiandi, Shanghai, 88 Songshan Road, Huangpu District  
**WEBSITE:** [www.andazshanghai.com](http://www.andazshanghai.com)  
**TEL:** (021) 2310 1234



HILTON SHANGHAI HONGQIAO

The hotel boasts breath-taking views of the city and is only 5 km from the Shanghai Hongqiao Airport/ Train Station and 9 km from the National Exhibition & Convention Center. Hilton Shanghai Hongqiao has 621 newly upgraded guest rooms and suites.

There are 2,800 sqm of newly upgraded conference and banquet venues, including a 6.7 m high pillarless luxury banquet hall. A brand new executive lounge inspired by old Shanghai style is a wonderful space for sharing, socializing and privacy.

Recreational facilities include a freshly upgraded fitness center with state-of-the-art fitness equipment and spacious outdoor space. Guests can also enjoy a 25 m indoor swimming pool with constant temperature swimming pool, equipped with hydraulic massage pool, steam room and sauna room, as well as outdoor children's swimming pool and terrace garden. The spa also offers Thai massage and physiotherapy room.

**ADDRESS:** 1116 East Hongsong Road, Minhang District  
**TEL:** (021) 3323 6666



BULGARI HOTEL SHANGHAI

Debuted in June 2018, The Bulgari Hotel Shanghai is the sixth global jewel of Bulgari's hospitality collection. It is comprised of the historic former Chamber of Commerce Shanghai, and the 48-story tower with scenic surroundings. Occupying the top eight floors, Bulgari Hotel Shanghai offers beautiful panoramic views. The hotel's 82 exquisitely crafted guestrooms, including 19 suites, are among the spacious in the city. Dining options are curated by Niko Romito, the celebrated chef. One Michelin star awarded Il Ristorante - Niko Romito presents contemporary Italian cooking. The Bulgari Bar with its iconic oval bar is the place to be for sophisticated drinks and socializing. Rooftop La Terrazza offers a casual menu. China's first Bulgari Il Cioccolato boutique on the ground floor indulges guests with 'chocolate gems'. The Bulgari Spa offers eight treatment rooms, a manicure and pedicure salon, hairdresser, plus a 25 m heated indoor and vitality pools, and the bespoke Workshop fitness studio.

**ADDRESS:** Lane 108, North Shanxi Road, Jing'an District  
**TEL:** (021) 3606 7788  
**EMAIL:** [shanghai@bulgarihotels.com](mailto:shanghai@bulgarihotels.com)  
**WEBSITE:** [https://www.bulgarihotels.com/en\\_US/shanghai](https://www.bulgarihotels.com/en_US/shanghai)



HOTEL INDIGO SHANGHAI JING'AN

Hotel Indigo Shanghai Jing'an is situated on No.28 Yutong Road, adjoin to the InterContinental Shanghai Jing'an, together forms a new iconic commercial complex including JiC Conference Center.

Abundant parking spaces are available with 72 Tesla Super-charger. 119 comfortable and chic designed guestrooms fully refurbished in November 2018, area ranging from 50-118 sqm, features with a 47-inch LCD television with International channels, wireless connectivity, separate rainforest shower and bathtub, fully-automatic toiletries and embedded 15-inch television set mirror in bathroom. Capsule coffee machine offers a delight and indulge in the aroma of coffee while escaping from the hustle and bustle. Pamper yourself in Docks with authentic taste of Asian or Western food, or overlook iconic Shanghai Skyline with a sip of wine.

**ADDRESS:** 28 Yutong Road, Jing'an District  
**TEL:** (021) 5253 9988  
**WEBSITE:** <https://www.ihg.com>



THE LANGHAM, SHANGHAI, XINTIANDI

Blending traditional Chinese elements with chic contemporary style, The Langham, Shanghai features 357 guest rooms and suites letting travellers revel in spacious comfort. All rooms feature stunning views of dynamic Shanghai framed by large floor-to-ceiling windows.

A world of culinary options awaits you at Cachet. Enjoy a bountiful selection of international cuisines prepared at several interactive cooking stations. For those seeking an exceptional Chinese menu, Michelin-one-star T'ang Court offers a mix of traditional favourites and contemporary dishes.

Stay healthy at our 24-hour Fitness Studio, with state-of-the-art equipment and cardio machines, or enjoy a few relaxing laps at our 25-metre heated indoor pool. If you need to wind down, pamper yourself with a collection of treatments, inspired by Traditional Chinese Medicine, at our award-winning Chuan Spa.

**ADDRESS:** 99 Madang Road, Xintiandi, Huangpu District  
**TEL:** (021) 2330 2288



THE RITZ-CARLTON SANYA, YALONG BAY

The Ritz-Carlton Sanya, Yalong Bay offers sophisticated travellers complete immersion in a luxurious resort experience from specially prepared amenities to the lavish spa.

Situated on an exclusive beach on the pristine Yalong Bay of Hainan Province, The Ritz-Carlton, Sanya is only 40 minutes by car from the Sanya Phoenix International Airport. The hotel features 446 well-appointed guest rooms with over 60 sqm (646 sq.ft) in space. There are 17 suites and 33 private pool villas, providing the ultimate in privacy, luxury, and comfort. The hotel also has 8 restaurants for travellers with discerning taste.

The Spa offers relaxing therapies and beauty treatments, along with a line of exclusive The Ritz-Carlton Spa products. The Spa also has a jade steam room and cool mist showers. The leisure area includes a relaxation lounge, water features, courtyards, fitness studio, kinesis studio, Chi studio, outdoor brine pools, and lounge.

**ADDRESS:** Yalong Bay National Resort District  
**TEL:** (0898) 8898 8888



THE PENINSULA SHANGHAI

Located on the historic riverside Bund, The Peninsula Shanghai pays homage to Shanghai in the 1920s. The Peninsula Shanghai features 235 comfortable guest rooms and suites commanding city and garden views, three restaurants - Yi Long Court for fine Cantonese dining, Sir Elly's serving modern European cuisine, and The Lobby offering The Peninsula's famed Afternoon Tea - plus the maritime-themed Compass Bar and nightly dancing at the timeless Salon de Ning. In addition to the hotel, the complex is comprised of The Peninsula Residences and a shopping arcade featuring luxury brands.

The Peninsula Shanghai offers guests a suite of rejuvenating massage and wellness therapies at The Peninsula Spa. The Peninsula Shanghai also offers two deluxe city touring options: an exquisitely appointed Azimut 47 private yacht for breakfast or sunset cruises on the Huangpu River, and bespoke luxury limousines provide chauffeured guided tours and shopping trips in Shanghai.

**ADDRESS:** No.32, East Zhongshan 1st Road, Huangpu District  
**TEL:** (021) 2327 2888  
**WEBSITE:** www.peninsula.com



THE WESTIN BUND CENTER SHANGHAI

Situated near the historic Bund area, The Westin Bund Center Shanghai remains one of the city's iconic hotels. Boasting a dramatic crown rooftop that lights up the Shanghai sky, the 26-storey hotel continues to impress guests with its grand atrium lobby. A striking cantilevered glass staircase inlaid with delicate rice paper and beautiful soft-glow lighting adds a warm and artistic touch that welcomes guests into the lobby. Featuring two towers, Grand Tower and Crown Tower, with 558 tastefully-decorated guest rooms including 24 suites, every room promises superior comfort. Every guestroom features the signature Heavenly Bed® including pillowtop mattresses, superior bedding, triple sheeting and down comforters. Dining options include three restaurants. The Stage offers an international buffet, The Crystal Garden serves Shanghaiese and Cantonese, and Michelin Plate-awarded Prego features home-style Italian. The famous Westin Sunday Brunch at The Stage continues to be the city's benchmark for the ultimate brunch experience.

**ADDRESS:** 88 Middle Henan Road, Huangpu District  
**TEL:** (021) 6335 1888  
**WEBSITE:** westinshanghai.com



# Restaurants

LUXURY LIVING



Dine out in style at Chili's in Jing'an.



# THE FUTURE IS PLANT-BASED

## 2022 VEGAN FOOD TRENDS.

By Cristina Ng



The vegan food industry in China had a moment in 2021. From plant-based menu items at international mainstream chains such as KFC and Starbucks to local brands such as Zrou, Zhen Meat, and Omnipork showing up on restaurants nationwide, interest in the vegan lifestyle is growing. We expect even more developments in 2022. Whether you are looking for a dietary change or just veg-curious, check out these vegan food trends in the coming year.

### 1. Vegetables Take Center Stage

That's right, the concept behind Carrot & Cleaver from vegan restaurateur Vivian Chang (MissGreen) reimagines a butchery - but with vegetables. Health and sustainability are core values here. Plus, the nutritious menu has lots of exciting options. Assemble a DIY meal with your choice of veggie 'cold cut,' whole food plant-based protein, dressing, and fermented vegetable (think kombucha carrots

or cauliflower cheese). Or jazz up an a la carte selection with house-made nut and seed oils - all created with a zero-waste sensibility.

### 2. Vegan Events for Everyone

Homegrown plant-based meat purveyors Zrou sponsored its 2nd Annual Chili Cook-Off in 2021. The event takes the traditional chili cook-off and requires contestants to prepare plant-based versions. Past contestants include Cages, Tacolicious, Cantina Agave, Pistolera, and more. On the flipside, Bubba's 16th Annual Shanghai Chili Cookoff - a very meat-heavy affair - had one vegan chili entry from MissGreen. Additionally, popular food festivals such as FEAST and Destination Paradise had vegan food options this year. What's hot about entertaining events like this is that they draw in mixed crowds to enjoy food that happens to be plant-based. In addition to the 3rd Annual Chili Cook-Off, we anticipate many more vegan food events in the future.

### 3. Vegan Home Deliveries on the Rise

More and more restaurants are adding vegan food options to their menus, which means you don't have to cook your food to maintain a plant-based lifestyle. There's also a growing number of delivery-only services catering to this market like Dessert Revolution for baked goods, 70/30 for healthy lunches, and Green Kitchen for both meals and treats.

Abi Franklin started Green Kitchen in 2020 as a vegan bakery. Now she offers meals to show people that "vegan doesn't mean boring or bland - you can still enjoy your favorite dishes and comfort foods while being kinder to the planet and everything in it." You will taste her passion if you try Green Kitchen's best-selling Peanut Butter and Chocolate Brownies! Order by adding Green Kitchen on WeChat (WeChat ID: GreenKitchenSH).

### 4. Plant-Based Meat Goes Mainstream

In 2021, local plant-based meat players such as Zhenmeat, Omnipork, Starfield, Hey Maet, HEROTEIN, Haofood, and Zrou made lots of noise. The latter's parent company Youkuai made big news in May 2021 for closing \$7.3 million in Series A funding. Safe to say, you can expect them and their competitors to continue making moves to attract a health- and environmental-conscious customer base. But, the big news will be when these products go mainstream and everyone is eating alternative proteins. Imagine a China where all your favorite restaurants offer alternative proteins alongside beef, chicken, pork, and seafood - and even carnivores order those dishes because they sound delicious. With everyone from Michelin-starred restaurants like Canton Table to fast food joints like KFC offering plant-based meat on menus, the future is coming.

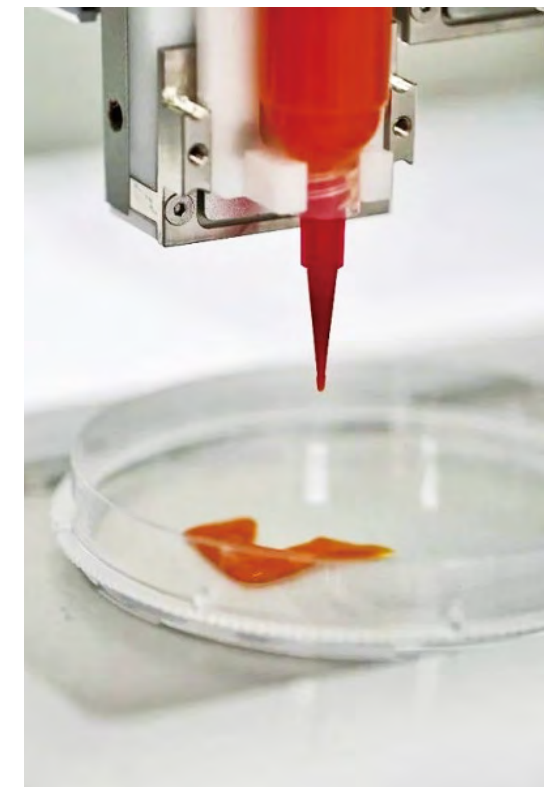
### 5. Alternative Seafood is a Game-Changer

Hong Kong's Green Monday Group has moved into the alternative seafood business with six new OmniSeafood joining its plant-based lineup. That means that you can enjoy seafood dishes without playing a role in diminishing ocean fish populations or adding to environmental abuses of the commercial fishing industry. In addition to appealing to vegans, this launch comes just in time for meat-eaters and flexitarians who have been wary of seafood after watching the popular documentary Seaspiracy. You can buy the classic fillet, golden fillet, ocean burger, OmniSalmon, OmniTuna, and

crab cakes at Green Common. And with Green Monday poised to open more Green Common locations next year, OmniSeafood is bound to make an impact.

### 6. Cultivated Meat is Coming

Where plant-based meat seeks to recreate the taste and texture of meat with vegetables and beans, cell-cultured meats use actual animal cells to produce meat in a laboratory. While not strictly vegan, cell-based meats have a lower environmental impact and don't require butchering a live animal. In September 2021, Shanghai-based food tech CellX debuted its cell-based pork and closed a \$4.3 million round of funding. Nanjing-based Joes Future Food secured \$10.9 million in its Series A round soon after in October 2021. Another Chinese company HEROTEIN also hopes to be the first to sell hybrid plant- and cultivated meat products in China through a strategic partnership with US-based Mission Barns. While still awaiting regulatory approval for cell-based meats in China, recent disruptions to the pork industry due to COVID-19 and African swine fever have led to government support for the idea.







# AZUL

## AZUL ITALIANO

### DESCRIPTION

Azul Italiano, the latest project by Peruvian restaurateur Eduardo Vargas, is bringing a flair of Mediterranean to Shanghai's food and dining scene, serving up classic antipasti, fresh seafood, handcrafted pasta and pizza in the upbeat Sinar Mas Plaza of North Bund. With a high ceiling and sunlit windows, the azure blue and passionate red décor of Azul Italiano is a new interpretation of Italian romance. The dining space is casual, fun and cozy, and the sliding doors can create various intimate spaces for gatherings.

### ITALIAN FLAVORS WITH A TWIST

The menu of Azul italiano is crafted by Venezuelan chef Willmer Colmenares, who joined AZUL & COLCA as Executive head chef in 2020 and has received rave reviews for his authentic and creative cuisines across the group's dining establishments since.

The all-new, Italian-inspired menu of Azul Italiano is on the casual side and perfect for sharing with friends and family. Highlighting fresh ingredients and traditional Italian flavors, Willmer has also added some creative twists.

Start the dinner with a couple of Azul Italiano's signature cocktails that are visually spectacular and equally delicious



- Toscana Campari, a refreshing cocktail with grapefruit juice, grapefruit syrup, lime juice and soda, or Marche, a sweet elixir featuring apple, grape, vanilla syrup and yoghurt.

Cioppino is a crowd-pleaser. Served in a vibrantly decorated bowl, the flavorful seafood stew has a base of rich, dense tomato soup made with shellfish and lobster head, and topped with fresh seafood cooked to perfection - tiger prawn, scallop, halibut, black mussel and clam. The seasoning is classic Italian highlighting fresh basil and oregano; the dish is served with garlic sourdough bread. The Red Crab Pasta is also another favorite. An expectedly sumptuous staple of gluten-free squid ink spaghetti topped with tender crab meat, roasted cherry tomatoes, spicy prawn oil, shiso leaves and nori. Azul Italiano also serves Neapolitan-style pizzas fresh from the oven in its open kitchen, featuring both classic and fusion-style recipes - like the Tuna Delight pizza bianco topped with tuna carpaccio, wasabi mayonnaise, arugula, bonito flakes and tobico caviar.

For dessert, don't miss The Fallen Garden, the house special tiramisu served in a chocolate pot with edible soil, meringue mushrooms and berries gelato scattered around to create an Instagram-perfect, delightfully sweet garden.



**ADDRESS:** 3F, Sinar Mars Plaza, 588 East Changzhi Road, Hongkou District  
**TEL:** (021) 6525 1636







# CHILI'S CAFE & BAR

**DESCRIPTION**

Chili's® American Restaurant & Bar, a global leader in the restaurant industry, was established in 1975 in Dallas, Texas.

It has become a popular dining destination in Shanghai's Lujiazui business and financial district since opening in 2019. Situated along the boardwalk of the Huangpu River in Pudong, diners sitting on the patio have waterside views of the historic Bund.

The second Chili's® location opened in an equally notable area of Jing'an District at the bustling commercial intersection of Tongren Road and East Nanjing Road.

**CHILI'S® SIGNATURE MENU ITEMS**

The menu is a Texas-inspired take on Mexican cuisine, offering a variety of dishes made with fresh, high-quality ingredients including hand-smashed burgers to lock in flavor, baby back ribs that are smoked on low heat and slow in-house over pecan wood, full-on sizzling fajitas that can make any head turn and the famous molten chocolate cake plus a variety of hand-shaken signature margaritas served daily for lunch and dinner.

**CHILI'S® CAFE & BAR**

This latest restaurant and bar design on Tongren Road, brings the concept of a modern casual cafe & bar experience to



the city. The zigzag pattern representative of the agave plant, which is a key ingredient of the tequila featured in Chili's® signature hand-shaken margarita line-up, can be seen throughout the bright and cheerful restaurant and bar making it the ideal place to celebrate your everyday big and small moments.

Chili's® looks forward to serving the Shanghai community, and sharing the brand's expertise in fajitas, burgers, fresh Mexican cuisine and margaritas. Chili's® is dedicated to delivering fresh, high-quality food with a unique point of view.

**ABOUT CHILI'S®**

Chili's® is the leading brand in the Brinker International, Inc. portfolio which has grown to more than 1,600 locations in 31 countries and territories and is one of the largest full-service casual dining Western brands in the world with a global supply chain system to ensure the freshest, highest-quality ingredients for guests.

At Chili's®, they take food seriously, because dining out should feel like a celebration even if there is nothing to celebrate. Their passion is making every guest feel special, and every day the 'ChiliHeads' fans make it their job to spread #ChilisLove across the brand's restaurants.



**ADDRESS:** 152 Tongren Road, Jing'an District  
**TEL:** (021) 6229 9331  
**WEBSITE:** <https://www.chilis.com>

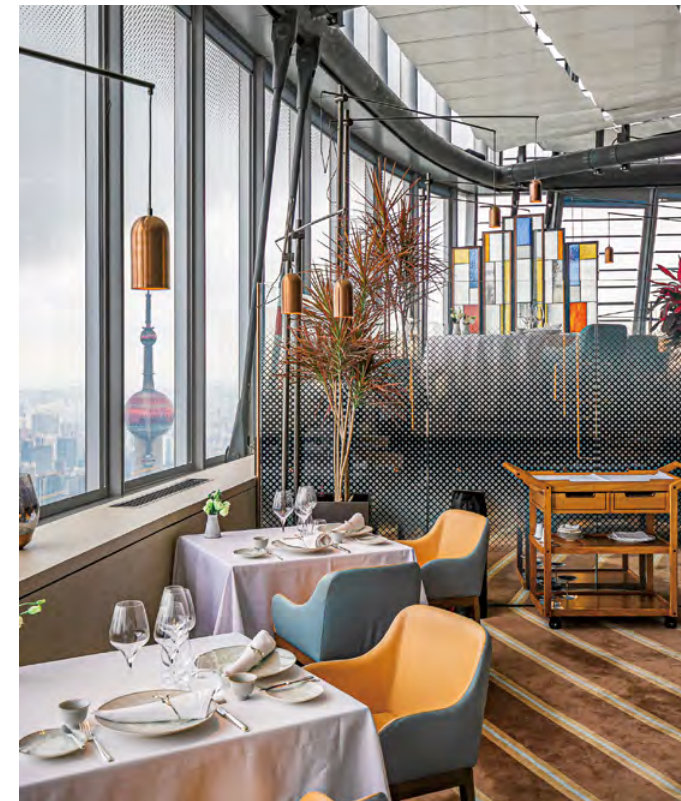




## COLCA

As the first Peruvian Cuisine Restaurant in Shanghai, Colca a must-try for its local Peruvian dishes. At the beginning of 2020, Colca opened its second store on the North Bund. Apart from inheriting the traditional Peruvian style, the new store also breaks the rules and brings a modern way of cooking into typical Peruvian ingredients. Colca Hengshan has a capacity of 200+ people. The restaurant has five sections: VIP room on the patio (12-20 seated), Glass Room (24-40), Wall Room (40-60), Main Room (60-80) and Colca Patio with bar area (100-150 standing). Colca North Bund at Sinar Mas Plaza has a spacious dining room (80-100 seated) as well as a mezzanine (30-35), and a large private room (12-16). There's also a separate bar area (good for cocktail reception) and plenty of outdoor seating. Colca We Room is a large hall with high ceilings and flexible layout, and is well equipped for private, corporate and commercial events. It has a stage, projector, and a sound system with microphones, and is also equipped to host DJs and musicians.

**ADDRESS:** 199 Hengshan Road, Xuhui District; 3F, Sinar Mas Plaza, 588 East Changzhi Road, Hongkou District  
**TEL:** (021) 5401 5366 (Hengshan); (021) 6593 3666 (Sinar Mas)



## MAISON LAMELOISE

Maison Lameloise Shanghai is the first restaurant launched in the Chinese mainland by the 3-Star Michelin chef Eric Pras. In 1921, the legend of Maison Lameloise originated in Chagny, a small French town. As a family business, it was passed down from Pierre Lameloise to Jean Lameloise, and then to Jacques Lameloise. Maison Lameloise Shanghai opened for business in July 2018 at Shanghai Tower, the tallest building in Asia. This is Maison Lameloise's first branch outside Burgundy. Located at a height of 314 m, the restaurant offers panoramic views of Lujiazui and the Bund. Maison Lameloise Shanghai is a fine dining restaurant offering authentic Burgundy cuisines, the menu changes according to the season. Executive Chef Yann Klein joined Maison Lameloise France in May 2012 and cooked alongside Eric Pras. Maison Lameloise Shanghai has been awarded with One Michelin Star for three consecutive years from 2020 to 2022 and two-diamond restaurant by Black Pearl during 2020-2021.

**ADDRESS:** 68F, Shanghai Tower, 501 Middle Yincheng Road, Pudong New Area  
**TEL:** (021) 6881 6789

MR & MRS BUND  
BY PAUL PAIRET

Open since April 2009, Mr & Mrs Bund is French in the manner of Chef Paul Pairet: born, travelled, and globally stamped. It's retro, yet contemporary, relaxed, without sacrificing an ounce of chic.

This modern eatery serves French and international favourites, through Pairet's looking glass. Service is family-style, recast for a modern table.

The menu, refreshed in September 2020, is inspired by France's legendary brasserie, New York's steakhouse and London's grill. The straightforward composition and cooking features retro classics, expressed with simplicity and Pairet's touch.

A democratic flourish that embraces the classics of the world, an extensive menu that anyone will recognise, a festive, shared experience that reflects a fun personality, Mr & Mrs Bund goes beyond modern French, it makes retro timeless.

**ADDRESS:** 6F, Bund 18, 18 East Zhongshan 1st Road, Huangpu District  
**TEL:** (021) 6323 9898  
**WEBSITE:** [www.mmbund.com](http://www.mmbund.com)



## POLUX BY PAUL PAIRET

Born French, and Shanghai raised, Polux lives in the heart of iconic lifestyle hub Xintiandi, a step away from the busy traffic. Polux is a French café. A bar, a bistro with a terrace, a casual-chic joint - where you can drop-in anytime for a hearty brunch, all day munchies and cosy dinner, whenever you are nearby or in the mood.

Enjoy oysters, charcuterie, steak frite, croque monsieur, french toast, baba, crème brûlée, croissant and baguettes, or some fresh juices, brewed coffee, ciders, beers from the tap-wall, wine, champagne and cocktails.

The classics, the staples, the simple, the proper and a bit more. The basics done with Pairet's touch and stripped to the core. The luxury of understated simplicity.

Polux is a place to drink and eat all day - unlike any other. A rendezvous for fun seekers, a hangout for bon vivants.

**ADDRESS:** No.5, Lane 181, Taicang Road, Xintiandi North Block, Huangpu District  
**TEL:** (021) 6333 9897  
**WEBSITE:** [www.poluxbypp.com](http://www.poluxbypp.com)



T'ANG COURT

T'ang Court at the Langham, Shanghai, Xintiandi, was awarded one Michelin Star. Since its opening, T'ang Court has adhered to high standards of classic Cantonese cuisine and meticulous and exceptional service. Diners enjoy an exquisite menu featuring premium ingredients selected for freshness, seasonality and well-being qualities. Unlike the modern and fashionable hotel lobby, T'ang Court shows a calm atmosphere. The naming and creativity of T'ang Court originated from the prosperous Tang Dynasty, with nine luxurious private rooms and elegant lobby area. The private rooms are named after several kinds of precious trees and have panoramic views of the bustling Xintiandi. In the lobby area with only six tables are displayed works of Mr Qu Guangci. T'ang Court strives to present classic Cantonese cuisine and the simple philosophy hidden behind the cuisine, sticking to the classics that stand the test of time. This precisely reflects the constant classic and elegant way of life that Langham Hotel has inherited over the past 156 years.

**ADDRESS:** 5F, Langham Shanghai Xintiandi, 99 Madang Road, Huangpu District  
**TEL:** (021) 2330 2430



WONDERLAND

When you step into Wonderland, you will be fascinated by the eye-catching scenery of the beautiful pavilion and pond. You can delight in authentic Cantonese cuisine, sip tea with friends or relax at the bar.

Situated on the 68th floor of Shanghai Tower with a views from 314 m high, Wonderland is dedicated to bringing an immersive dining experience to customers through its food, drinks and service.

With a garden-like decoration style, Wonderland is worthy of its name. From the delicate jade ornaments to the traditional Chinese style bookshelves, all of these demonstrate an imperial taste. Aside from the open dining lobby, there is an exclusive VIP room which can accommodate 14 guests.

The chefs at Wonderland are made up of a team with Michelin three-stars. Chef Lee has more than 20 years experience as a Cantonese chef.

**ADDRESS:** 68F, Shanghai Tower, 501 Middle Yincheng Road, Pudong New Area  
**TEL:** (021) 6881 0088



ULTRAVIOLET BY PAUL PAIRET

Conceived by Paul Pairet and supported by VOL Group, Ultraviolet is the first restaurant of its kind uniting food with multi-sensorial technologies in order to create a fully immersive dining experience. Ultra-Dining, has three Michelin Stars and has been one of The World's 50 Best Restaurants since 2015. A single table seats ten only, in a dining room of high-end technology with a 20-course "Avant-Garde" set menu.

All guests sit together. The experience unfolds as a play. Food leads. Each course is enhanced with its own taste-tailored atmosphere: lights, sounds, music, scents, projection, images and imagination and food. The environment influences, entertains, challenges, interacts, celebrates, boosts, immerses, or simply supports the perception of taste to induce the role of the elusive "psycho-taste", and acknowledge the influence, on taste, of everything about taste, except the taste. Ultraviolet offers a bold and exclusive dining experience that engages all the senses to create the ultimate luxury: emotion. Ultraviolet opened on 18th May, 2012.

**WEBSITE:** [www.uvbypp.cc](http://www.uvbypp.cc)



ZENIYA SHANGHAI

Zeniya Shanghai is located on the 68th floor of Shanghai Tower. The style of the restaurant is modern and noble. The dining area in the terrace offers guests panoramic views of the splendor of Lujiazui.

Executive Chef Tsu Yoshi Ikeda San was awarded the senior chef qualification of Kanagawa Prefecture in Japan. He has more than 30 years of experience in Japan, Taiwan and Shanghai, and has been working as a chef for 20 years. He harmonizes the four taste arts of "color, smell, taste and plates".

Guests can enjoy a sophisticated Kaiseki cuisine. The private dining room at the Yun Pin grill provides serviced teppanaki courses that give diners the opportunity to have a close up view of the dishes during preparation.

**ADDRESS:** 68F, Shanghai Tower, 501 Middle Yincheng Road, Pudong New Area  
**TEL:** (021) 6882 6789





# Wellness & Spa

LUXURY LIVING

---

Breath deep and center your mind...



# PRESSING PAUSE

PRESERVING YOUR ENERGY IN THE WHIRLWIND OF LIFE.

By Jodie Ratcliffe



I'm not much of a sailor, but at times in life I have certainly felt a little 'lost at sea', sailing on a boat that's being pulled in so many directions, losing control of the mast, trying not to capsize and wondering if I've done all the things I was supposed to do. What I've noticed about these moments of losing control is that they usually happen when I'm juggling too many balls, or when the world and people around me are moving at a pace that I just can't keep up with. And what I've learned is that rather than steering the boat into the middle of the ocean to try and battle through the storm, it's much more beneficial to guide it back to the shore and take a moment of rest. From the shore, our whole perspective changes. We are no longer being pulled in opposite directions by the tide, but can instead look out to the waves from the safety of the earth and watch the waves ebb and flow to try to understand and make sense of what is happening.

My most recent feeling of being a 'lost at sea' came

when the COVID-19 restrictions were lifted slightly, the world changed yet again and I suddenly found myself (and my family) with a full diary of extra-curricular activities, work deadlines, family time and attempting some form of social life again too. Although it was what I had been looking forward to for so many long months, it suddenly felt overwhelming to be trying to fit so many activities into one day. Perhaps my tolerance levels had changed over the past year, perhaps my energy had shifted, or perhaps my body was telling me to just take it easy and do the best that I can for myself and those around me. I like to think that it was the last option, and so amongst the external pressures of running little ones around and helping with homework, I am also making sure that I factor in time for me. To rest, rejuvenate, and recentre. The most important thing to consider when trying to figure out how you can press pause for a moment, is to ask yourself two questions;

1. What gives you your energy, and
2. What saps you of your energy?

One person's idea of a feel-good activity might be another person's idea of a challenging chore, because we all get our energy levels from different sources. For example, if you are feeling tired after a long day of work, which of the following would make you feel more relaxed- a long soak in the bath or a long run in the park? Cooking a meal or ordering takeaway? Each of these are very different from each other, but offer energy and stimulation in different ways for different individuals. To figure out what gives you energy and what takes your energy away, you can make a simple list.

## Things that make me feel good vs. Things that make me feel tired

This will start to give you a good idea of where and who you get your energy from, whilst also being able to see where and who you should be avoiding if you're needing to preserve some energy.

You can even take this list of "Things That Make Me Feel Good" a step further, to truly enable you to slow down and take time for yourself. Once you have listed your energising items, big and small, you can start to slowly factor these things into your day. I'll give you an example from my own list, which contains items and activities such as:

- Drinking hot tea • Listening to music
- Practising yoga • Calling my best friend
- Sunshine • Reading in bed

Now that I can physically see these activities on a page, I can immediately start to understand what I am craving and what I need to do more of in my slow moments. If I am feeling overwhelmed by the whirlwind of my week, I can make sure that I go to bed slightly earlier so that I can spend some time reading my book with a hot cup of tea. And miraculously, without employing magic, I have given myself the time and activity that I craved and my energy levels automatically rise.

Sometimes pressing pause is exactly the thing you need to do to harness your inner power, creativity, and motivation to help you come back with more energy for yourselves, and those around you. After all, we know that we cannot pour from an empty cup, so I invite you to take the time to fill your cup to the brim with all the things that make you feel energised and enjoy the reward of drinking it all up with your loved ones.







音昱OCTAVE  
Institute



# A JOURNEY OF LIFE EXPLORATION, AN INSIGHT INTO THE TRUE SELF

OCTAVE INSTITUTE

In the 21st century, with the rapid development of science and technology, people enjoy the unprecedented prosperity of material, but neglect their true hearts and become distant with others' spirits. At the same time, the increasingly harsh natural environment, complex interpersonal relationships and social pressures also challenge physical and mental health. How do we explore and perceive the true meaning of life through conscious effort, so as to gain a sustainable and happy life?

In order to answer this question, Octave has constructed a mindfulness life system integrating Oriental wisdom and Western science from the perspective of the relationships with nature, others and self. Through a series of learning projects and experiences, Octave supports people to understand the essence of harmonious relationship, feel the harmony between man and nature, and finally reach the realm of freedom and carpe diem.

As a new life school in the 21st century, Octave creates a new community with a

new sustainable healthy lifestyle for human beings.

## Mindful Living Program

The Mindful Living Program, based on the concept of mindfulness and centered around the "seven living habits", aims to foster a healthier lifestyle, support a greater state of freedom and improve your life in all respects. The Mindful Life--Practice and Enlightenment Class is a course of the series programs offered by Octave Institute. During the 8-day-and-7-night journey, you will face various challenges of modern oriental mindful practices: walking exercises, yoga stretching, mindful breathing, meditation and sound healing therapy; experience mindful eating on a vegan-dominated diet; enjoy a wide range of classes on mindfulness and participate in mindfulness-themed lectures to attain a higher level of wisdom. By practicing and cultivating seven living habits, i.e. "Eating, Breathing, Sleeping, Movement, Stillness, Mindfulness and Self-development", this will be an inward exploration, a cry from the heart, and an unleashing of potential--



## THE LIVING ROOM

ADDRESS: 357 West Jianguo Road, Xuhui District  
TEL: (021) 3338 4666

## SANGHA RETREAT

ADDRESS: 199 Yangcheng Ring Road, Suzhou  
TEL: (0512) 6788 1666  
WEBSITE: <https://www.octaveinstitute.com>







it is a journey you cannot miss. Join and see how you will be reborn.

#### Quantum Leadership Program

The Quantum Leadership series program integrates Oriental wisdom and Western science of quantum, psychology and meditation, which helps students achieve "overall transformation" step by step through the six modules of "quantum world outlook - meditation science - self cognition - family relationship - enterprise development - global development". Unique online tutor group and co-tutor guided learning, and interaction between personal practice and group discussion both explore the body's potential wisdom and energy through practice.

Quantum Leadership, as a new method of human life and social development in the 21st century, explores a new way to discover the essence of life. Focusing on the training and promotion of consciousness, it helps to better understand the self, the present state and future trends, which comprehensively enhances the emerging leadership applicable to all stages and occasions of life.

#### SANGHA Retreat by OCTAVE Institute: The place of health preservation, an insight into the true self

SANGHA Retreat is a large health and mindfulness community, which integrates Oriental wisdom and Western science of the mindfulness life

system to provide a new comprehensive health experience. The brainchild of visionary Fred Tsao, the retreat encourages guests to become fully immersed in their personal wellbeing evolution, through individually curated programs addressing the seven living habits of life: Eating, Breathing, Sleeping, Movement, Stillness, Mindfulness and Self-development so as to enhance their inner awareness.

SANGHA Retreat is located in a beautiful corner of Yangcheng Lake Peninsula, with an area of 189,000 sqm. It consists of three areas: AT ONE Retreat, The Village and Sangha Villa. Integrating life, health preservation and learning, this mindfulness community aims to help people promote harmonious relations with self, others and nature from space design, curriculum projects to daily life. Guests can connect with like-minded people and pursue the true meaning of life through health care, spa, interactive learning and other body, mind and moral projects.

AT ONE by Sangha Retreat consists of the AT ONE Clinic which provides comprehensive health assessment and health testing services, AT ONE Healing Spa which has unrivalled facilities in Asia, customized hotel rooms for comprehensive health, and Thought for Food Restaurant, while providing mindfulness courses designed to suit human physiological rhythms. The all-round journey of wellness will start here to help guests relax and invigorate their minds and vitality from

inside to outside, so as to enjoy a healthy and fulfilled life.

The Village is a comprehensive space for both study and life, with residence and serviced apartments designed for joint exploration and learning, as well as multi-functional interactive spaces such as the meeting hall, lecture hall, auditorium, community square, Sangha café, Sangha gallery and conference room. These exquisitely designed and elegantly decorated places are suitable for various corporate events or special gatherings such as weddings, celebrations, parties, team building, business meetings, and even professional forums and seminars. Each space is flexible and can be tailored for the different needs of various events.

Sangha Villa is composed of lakeview villas, quietly standing on the bank of Yangcheng Lake. In this place, people can abandon the complex thoughts of urban life and restore through the connection with self, others and nature in a harmonious community.

#### THE LIVING ROOM by OCTAVE Institute: Find rest for your body and mind, start a mindful life in the city

THE LIVING ROOM by OCTAVE Institute sits on West Jianguo Road in downtown Shanghai, an area with a rich cultural heritage. As OCTAVE Institute's urban health complex, is it a place where international experts, including therapists, fitness instructors, yoga and pilates instructors, dietitians, counselors, life mentors, TCM experts, Ayurvedic experts and more, gather to support the integrated community learning space and provide health solutions. It aims to help people improve their overall spiritual health and better adapt to the fast-paced city life through the practice of seven habits: diet, breath, sleep, exercise, meditation, mindfulness and self-development.

Thought For Food is the restaurant at THE LIVING ROOM by OCTAVE Institute. It serves natural and healthy produce for mindful living and health preservation, focusing on the important role of food in daily life. The executive chef and a team of dietitians select healthy, seasonal produce to prepare a menu centered on mindfulness, which takes advantage of the best ingredients available at the time to craft a cuisine rich in both taste and nutrition, while innovatively honoring and interpreting the profound connections between food, mind, body, spirit and others.

THE LIVING ROOM by OCTAVE Institute designs themed events throughout the year, covering both Chinese and Western, ancient and modern festivals, such as the OCTAVE flowers festival, International Earth Day, and OCTAVE Mother's Day. With unique mindfulness courses, weekend markets, cultural performances and creative menus, each event invites people in the city to explore the meaning of self, family and community and rethink the value of life, culture and the world through immersive experiences in a relaxing space.

For more information, please go to the official website: <https://www.octaveinstitute.com>







# ZETA VILLA

### DESCRIPTION

Founded in 2005, ZETA Beauty Group opened its first skin management agency in Hong Kong. Adhering to the concept of "beauty from technology", it commenced a journey of spa luxury care in Shanghai in 2007. It now has several branches in the city, ZETA Villa Silk Ting in Xintiandi, Hongqiao CBD, Wukangting, Biyun International Community, Jing'an Temple and other prosperous central business areas. ZETA Villa has been well-known in the Shanghai spa industry for its quality and immersive treatments including beauty technology, slimming and shaping, aroma spa, manicure and waxing.

### DISTINCTIVENESS

Over the past decade, ZETA Villa has been pursuing high standards in the beauty spa industry. ZETA Villa has been devoted to providing clients with one-stop customized service from the analysis of skin problems, to the customization of treatment, and later the arrangement of long-term treatment, through which it has earned an excellent reputation. ZETA Villa also advocates daily care and nourishment.

### LOCATION

Its branch locations ZETA Villa Silk · Ting can be found in Xintiandi, Hongqiao CBD,



Wukangting, Biyun International Community, Jing'an Temple and many others.

### FACILITIES

To offer better a experience, ZETA Villa continues to introduce well-known brands from around the world, such as Haifeixiu (ZETA Villa's official partner in Eastern China), La Colline, PHYTOMER, Venus Legacy (goddess machine)). In this way, guests can enjoy the products and services of high-end international brands without going abroad, which contributes to a far more comfortable and convenient experience.

### SERVICES

ZETA Villa attaches great importance to the training and norms of every beautician. It has formulated a complete set of standards and a service system starting from the greetings, giving the urbanite multi-dimensional pleasure in terms of hearing, smelling, seeing, tasting, touching and feeling.



**ADDRESS:** 3F, Tongren 88, 72 Tongren Road, Jing'an District  
**TEL:** (021) 6289 9129  
**EMAIL:** tr@zeta-spa.com





# Health

## LUXURY LIVING



Place your health in trustworthy hands  
at ParkwayHealth.



# WHY ANNUAL HEALTH CHECKS MATTER

EVEN IF YOUR HOME IS FAR AWAY



**DELTAHEALTH HOSPITAL  
SHANGHAI**

**ADDRESS:** 109 Xule Road,  
Xujing Town, Qingpu District

**DELTAHEALTH CLINIC  
HONGQIAO**

**ADDRESS:** 3F, Block A, Gubei  
SOHO, 188 Hongbaoshi Road,  
Changning District

**APPOINTMENTS:** 400 821  
0277



Foreign nationals may be used to getting a health check up in their home country. But since international travel is still restricted, should foreigners wait for their health checkup?

## Why is an annual health check important?

For foreign nationals, visiting home and being around familiar surroundings and people, including a visit to a trusted family doctor can be a welcomed comfort. However, being on time with an annual checkup is even more important.

Annual health checks help with the early detection of any underlying diseases, even if there are no symptoms. Some symptoms include high levels of serum uric acid that could lead to gout, or high cholesterol that can potentially cause atherosclerosis, clogged arteries. An annual health check promotes health by ensuring the appropriateness of ongoing treatments and following up on minor problems from previous health checks. It can also be seen as preventive care since results from a premium health check can be used as a risk assessment for future development of diseases.

## How do we select the appropriate annual check package?

Selecting the right annual health check package can be based on several factors including age, pre-existing illness, personal risk factor, family history of diseases. Premium packages offer more in-depth investigations such as VAP to measure cholesterol and hypertensive markers.

Why are in-depth investigations helpful? Unlike the standard cholesterol test, the advanced VAP Cholesterol test assesses levels of all the blood lipids measured in a standard lipid profile (total cholesterol, LDL, HDL, and triglycerides), plus subclasses of lipids that are known as emerging risk factors for cardiovascular disease, such as LDL particle size and lipoprotein(a). Because of the detailed lipid analysis, the VAP Cholesterol test can identify people at risk for cardiovascular disease with a detection rate that is more than twice that of routine cholesterol panels. The sophisticated VAP test allows physicians to more accurately assess their patients' risks for cardiovascular disease, and thus to better manage their treatment.

## Once the annual health check is completed, what's next?

Within a few days of the health check, a detail report will be issued. Within the report, will be a summary of any abnormalities or problems. Unlike many other health centres, a doctor consultation will be provided to explain the results. Based on clinical findings and risk factors, a referral can be provided by one of the hospital's many specialists to examine the matter further. Especially for foreign nationals who are far away from their home country, knowing the status of their health is crucial for adopting the right healthcare plan.



### Dr Eddi Tham Hock Guan

*Director of International VIP Center, DeltaHealth Hospital Senior physician of Family Medicine  
Languages: Mandarin, English, Cantonese, Hokkien, Malay*

Dr Eddi Tham graduated from Melaka-Manipal Medical College of Malaysia with a bachelor's degree in Medicine and Surgery (MBBS). Dr Tham has more than 15 years of practicing experience as a General Practitioner and Pediatrician. In addition, he served in Western Sahara as a military doctor under a peacekeeping mission of the United Nations. He specializes in Family Medicine, Pediatrics and General Surgery. He takes a keen interest in the fields of Pediatrics, Psychology and Diving Medicine.



### Dr Lim Kah Yeuan Dylan

*Physician of Family Medicine  
Languages: Mandarin, English, Cantonese, Malay*

Dr Lim received his medical degree in 1998 from Karnatak University. He completed his training in Family Medicine in 2010 where he was rotated through various departments in both inpatient and outpatient care. Dr Lim was trained and exposed in the diagnosis, treatment and handling of various ailments pertaining to Family Medicine. Dr Lim is specialized in Family Medicine with several area of interests that include pediatrics, gynecology and minor office surgery.

Dr Lim has over 20 years of clinical experience. He has served in some government general hospitals, army medical centers, and various private centers in Malaysia after graduation. Dr Lim has been practicing in China for the past several years in Suzhou, Nanjing and Hangzhou as a Family Physician before joining Delta Healthcare in Shanghai. Dr Lim is also a member of the Academy of Family Physicians of Malaysia.



# A RELATIONSHIP BEYOND THE BABY YEARS

THE RELATIONSHIP FROM BIRTH TO ADULthood



Most people associate pediatricians with newborn babies, however, not many parents realize that they can look after and guide their child from the first day of school through adolescence. For parents, there are three things you may not know about your relationship with your child's pediatrician and how they can help your child thrive.

### Newborn Care

For first time parents, learning how to take care of a child could be a challenge. Although every baby is different, a paediatrician can help parents understand what to expect, what is normal and abnormal. For mothers who are doing postpartum recovery at the maternity ward, a paediatrician can help give new mums the confidence to care for their child through one-on-one sessions and, monitor the child's growth and development from their first hours of life.

### Early Screening

As babies continue to grow into healthy toddlers, it is essential to check their developmental milestones. As an infant, paediatrician checkups are more regular especially when parents are getting their child vaccinated. However, even when young children are healthy it is important to continue wellness checks once a year. This allows for a full check up on their height and weight, which indicates if the child is meeting the nutrition standards. Annual checks will also look at the child's vision, teeth, blood pressure and glucose levels as a screening for obesity.

But also, this is an opportunity to check on the child's developmental milestones and determine if the child has a developmental delay, for example, language, motor function or social function. If the child is diagnosed as experiencing a delay, the paediatrician will prepare for a referral to a specialist and help parents understand the situation.

### Adolescence

As a child grows into a young adult, annual checks with the paediatrician will focus on other areas such as anaemia, urinalysis signs of urinary tract infection, as well as x-rays and screening tests required by schools. In the teenager years, adolescents will be undergoing hormonal changes so paediatricians will focus on that as well as obesity and mental health. With higher levels of competition nowadays and social pressures, teens will have a private session with their doctor to determine their general mental wellness.

Although some locally qualified paediatricians are equipped to only deal with children up to 12 years of age, referrals can be made to a family doctor or paediatricians with an international qualification that can see patients up to 18 years of age.

From newborn babies to young adults, the team of paediatricians from United Family Shanghai Pudong can be there at every step of the way for your child.



APPOINTMENTS: 400 639 3900

**SHANGHAI UNITED FAMILY HOSPITAL**  
ADDRESS: 699 Pingtang Road, Changning District  
HOURS: Open 24/7

**SHANGHAI UNITED FAMILY PUDONG HOSPITAL**  
ADDRESS: 1598 New Jinqiao Road, Pudong New Area  
HOURS: Open 24/7

**XINTIANDI CLINIC**  
ADDRESS: Suite 402, 85 Taoyuan Road, Silver Court Building, Huangpu District  
TEL: (021) 6280 6660

**QUANKOU CLINIC**  
ADDRESS: 8 Quankou Road, Changning District  
TEL: (021) 2216 3999

**FENGSHANG CLINIC**  
ADDRESS: 689 Yunle Road, Huacao Town, Minhang District  
TEL: (021) 3490 0608







# BODY & SOUL MEDICAL CLINICS

DESCRIPTION

Body & Soul is your solution for wellness in Shanghai, with over 17 years successfully treating patients with a holistic blend of TCM and Western therapies. They also offer Shanghai's largest team of multi-disciplinary pain management and rehabilitation experts.

Their doctors offer patients evidence-based diagnosis and treatment, with the most gentle and natural techniques. They are committed to a comprehensive and integrative approach to individual healthcare and clinical diagnosis.

SERVICES

Consultations are available in English, German, Spanish, Japanese and Chinese. With in-house diagnostic equipment, laboratory and pharmacy services, we make it easy for patients to get the most effective, efficient treatment. Lab Services, Medical Imaging, On-Site Pharmacy

Treatments offered at Body & Soul - Medical Clinics are covered by major insurances. Body & Soul - Medical Clinics also provides direct billing with various insurance companies.

DEPARTMENTS



Acupuncture, Chiropractic, Cupping, Dermatology, Fertility Treatment, Functional Medicine, Gynecology, Herbal Medicine, Orthotics, Osteopathy, Physiotherapy & Rehabilitation, Psychology, TCM & Internal Medicine, Tuina Massage



DOWNTOWN CLINIC & LIFESTYLE CENTER

ADDRESS: Rm. 5, 14F, Anji Plaza, 760 South Xizang Road, Huangpu District  
TEL: (021) 6345 5101 \*223/225  
EMAIL: [huangpu@bodyand-soul.com.cn](mailto:huangpu@bodyand-soul.com.cn)

HONGMEI ROAD CLINIC

ADDRESS: Zhidi Plaza, 211 Chengjiaqiao Zhi Road, Minhang District  
TEL: (021) 6461 6550 \*0/219  
EMAIL: [minhang@bodyand-soul.com.cn](mailto:minhang@bodyand-soul.com.cn)  
WEBSITE: <https://tcm-shanghai.com/en/>



# COLUMBIA KAIYI CLINIC

DESCRIPTION

Columbia Kaiyi Clinic is a privately-held Shanghai-based healthcare company under the Columbia China umbrella. Columbia China seeks to put patients at the center of its healthcare practice to deliver the highest quality of care. That means offering patients world-class medical facilities with the most advanced healthcare diagnostics and treatment technology.

Columbia's hospitals and clinics strive to attract the most highly-skilled physicians and nurses. Technology and innovations are at the heart of their operations; providing medical personnel with cutting-edge IT management systems enables them to deliver care more efficiently and effectively. Columbia place the utmost importance on price transparency so patients know in ad-

vance exactly how much their care will cost and are assured that care adheres to the highest ethical standards. The implementation of these healthcare best practices enables them to improve the health and well-being of each person they serve.

Columbia China is a privately-held Shanghai-based healthcare company jointly invested by Columbia Pacific Management (CPM) from the United States and Sheares Healthcare Group (SHEARES) from Singapore. In April 2020, Swire Pacific made an investment in Columbia China through a partnership with Columbia Pacific Management.



SHANGHAI KAIYI BAINUO CLINIC

ADDRESS: 25F, United Plaza, 1468 West Nanjing Road, Jing'an District  
TEL: 400 663 7707

SHANGHAI KAIYI YIHUI CLINIC

ADDRESS: 5F, Block B, LCM, 2389 Zhangyang Road, Pudong New Area  
TEL: 400 663 7707

SHANGHAI KAIYI LIBO CLINIC

ADDRESS: 3F, Building A5, Huijing Life Plaza, 988 Quxi Road, Huangpu District  
TEL: (021) 6391 9188



DEPARTMENTS



Medical Service, Internal Medicine, Ear Nose & Throat, Gynaecology, Dermatology, Traditional Chinese Medicine, Rehab & Sports Medicine, General Surgery, Psychology, Laboratory, Radiology, Mental Health, Vaccines, Pediatrician, Physical Rehabilitation





# DELTAHEALTH HOSPITAL SHANGHAI

DESCRIPTION

DeltaHealth Hospital is a foreign-owned general hospital with a cardiovascular center of excellence. The medical team is led by renowned experts in cardiology, cardiac surgery, medical imaging and intervention therapy whom are dedicated in the research and innovation of cardiovascular treatment. They run a “one-heart team” model that adapts a multidisciplinary team approach which aims at providing patients with customized treatment plans that best addresses the patients’ condition. Supported by advanced disease management principles, international standards on clinical guidelines and frontier research findings,

DeltaHealth offers patients holistic, end-to-end care including prevention, screening, diagnosis, treatment and rehabilitation.

In 2018, DeltaHealth officially joined the national basic medical insurance reimbursement system and was recognized by the Shanghai government as a “high-quality medical institution.” They accept other types of settlement, like commercial insurance. Established and managed in accordance to JCI standards, DeltaHealth is committed to a “patient-centric” principle and is dedicated in providing high-quality medical services to patients, guaranteeing a comfortable, convenient and caring experience.

DEPARTMENTS



Cardiology, Cardiac Surgery, Surgery, Thoracic Surgery, Medical Imaging, Digestive Medicine, Family Medicine, Internal Medicine, Endocrinology, Gynecology, Pediatrics, Dermatology, Rehabilitation, Orthopedics, Integrative Medicine, Ophthalmology, Ear, Nose, and Throat (ENT), Psychology, Traditional Chinese Medicine (TCM), Nutrition, Vaccination, Health Screening Center



# JIAHUI INTERNATIONAL HOSPITAL

DESCRIPTION

Located in Xuhui District, Jiahui International Hospital opened in October 2017 and offers over 35 medical specialties. Through its unique collaboration with Massachusetts General Hospital (MGH), the oldest and largest teaching hospital of Harvard Medical School, Jiahui Health brings leading global healthcare resources and China’s most advanced medical expertise to patients, delivering a patient-centered experience based on care, quality, and impact.

FACILITIES

Jiahui Health’s integrated healthcare system consists of a 500-bed international hospital,

clinics, and a team of healthcare professionals from across the globe. Jiahui provides safe, reliable, and comprehensive international healthcare services for people at all stages of life, including health management, outpatient care, inpatient and emergency services, and international medicine. Jiahui has three Centers of Excellence, the Jiahui International Cancer Center, the Jiahui Women’s Health Center, and the Jiahui Orthopedics and Sports Medicine Center, as well as key disciplines such as pediatrics, cardiology and general surgery.

DEPARTMENTS



Anesthesiology, Breast Institute, Cancer Center, Cardiology, Dentistry, Dermatology, E.N.T., 24/7 Emergency Department, Family Medicine, Fertility and Reproductive Medicine, Gastroenterology/Endoscopy Center, Global Solutions Network, Hospital Medicine, ICU Service, Internal Medicine, Medical Imaging Center, Mental Health, Nutrition, Obstetrics & Gynecology, Ophthalmology, Orthopedics and Sports Medicine, Pain Management, Pediatrics, Plastic Surgery, Rehabilitation, General Surgery, Traditional Chinese Medicine, etc.



JIAHUI INTERNATIONAL HOSPITAL

HOURS: Mon - Sun, 24 hours  
ADDRESS: 689 Guiping Road, Xuhui District  
TEL: 400 868 3000

JIAHUI HEALTH JING’AN

HOURS: Mon - Sun, 9 a.m. - 6 p.m.  
ADDRESS: Suite 101, 88 Changshu Road, Jing’an District

JIAHUI HEALTH YANGPU

HOURS: Mon - Sat, 9 a.m. - 6 p.m.  
ADDRESS: 1F/2F, Suite 3, 99 Jiangwancheng Road, Yangpu District







# MINDFRONT SHANGHAI CLINIC

### DESCRIPTION

Mindfront Shanghai Clinic specializes in urban mental disorders or mental health issues, providing multidimensional professional help in various disorders and issues such as sleep disorders, anxiety and depression, obsessive-compulsive disorders, ADHD in children and adolescents, women's mental health, addictive behaviors, parent-child and family relationships, social relationships, etc.

Mindfront Shanghai Clinic's professional team consists of psychiatrists with extensive clinical experience and overseas-trained counselors and therapists. Professional services are delivered through a multidisciplinary teamwork model. Also, a case manager is assigned to provide support throughout the course of treatment and ensure timely responses to client needs.

ment and ensure timely responses to client needs.

As a global brand focusing on mental health services under Luye Medical Group, Mindfront is committed to bringing the evidence-based treatment programs and integrated medical service system originating from Australia into China by cooperating with established public mental health institutions and well-known expert teams, with the aim to build an integrated evidence-based treatment system customized for the clients.



**ADDRESS:** 18F, Crystal Tower, 68 Yuyuan Road, Jing'an District  
**HOURS:** Mon-Sun, 10 a.m.-6 p.m.  
**TEL:** (021) 6718 8883  
**WEBSITE:** <https://www.mindfront.com/en/home>



### DEPARTMENTS



Sleep Disorders, Anxiety and Depression, Obsessive-Compulsive Disorder, ADHD, women's mental health, addictive behaviors, family counselling, marriage and relationship counselling,



# PARKWAYHEALTH

### DESCRIPTION

Parkway China is a leading international healthcare provider. With a team of nearly 100 internationally trained physicians, they now operate three hospitals and six medical and dental centers conveniently located in Shanghai, Suzhou, Chengdu and Hong Kong offering more than 40 specialties. They work closely with the best local hospitals with which they share knowledge and expertise to ensure the best services possible to patients. They have established direct billing services with over 50 insurance companies. Parkway provides both outpatient and inpatient

care for adults and children.

Parkway China is a member of Parkway Pantai Group, Asia's Leading Healthcare Provider, part of IHH Healthcare, and one of the largest healthcare providers in the world by market capitalization. It operates 80 hospitals with more than 15,000 beds in 10 countries. In 2006, Parkway opened its first medical center in Shanghai, bringing world-renowned quality healthcare to China. Through the acquisition of World Link Group in 2007, Parkway China became Shanghai's largest foreign-owned medical network.

### DEPARTMENTS



Allergy, Beauty & Skin Care, Cardiology, Chiropractic, Dentistry, Dermatology, ENT-Otorhinolaryngology, Family Medicine, Gastroenterology, General Surgery, Gynecology, Hand Surgery, Internal Medicine, Neurology, Nutrition, Oncology, Ophthalmology, Orthopedics & Sports Medicine, Osteopathy, Pain Management, Pediatrics, Physiotherapy, Plastic Surgery, Psychiatry, Psychology Services & Counseling, Radiology, Speech & Language Therapy, Traditional Chinese Medicine & Acupuncture, Ultrasonography, Upper Extremity Therapy, Urology



**APPOINTMENTS:** 400 819 6622  
**WEBSITE:** <https://www.parkway-pantai.cn/en/index.php>

**PARKWAY HOSPITAL PEOPLE'S SQUARE**  
**ADDRESS:** 1-4F, Plaza 336, 336 Middle Xizang Road  
**TEL:** (021) 6033 2345

**GLENEAGLES MEDICAL AND SURGICAL CENTER**  
**ADDRESS:** 4F, Tomorrow Square, 389 Nanjing West Road  
**TEL:** (021) 6375 5588

**SHANGHAI CENTRE MEDICAL AND DENTAL CENTERS**  
**ADDRESS:** 203-204 West Retail Plaza, 1376 West Nanjing Road  
**TEL:** (021) 6279 7418 (Medical), (021) 6279 8318 (Dental)

**JINQIAO MEDICAL AND DENTAL CENTER**  
**ADDRESS:** 997 Biyun Road, Jinqiao, Pudong New Area  
**TEL:** (021) 5031 4656

**HONGQIAO MEDICAL CENTER**  
**ADDRESS:** 505 Gubei Road  
**TEL:** (021) 6242 4244







# RENAI INTERNATIONAL MEDICAL CENTER

DESCRIPTION

Shanghai Renai Hospital (a Medicare designated hospital) is the first private hospital, established in Shanghai in 2001. Renai pioneered the introduction of personalized care to healthcare service sector. In an era when quality health care services had been inaccessible for most, Renai made revolutionary changes that guaranteed the access to quality health service for every income group in Shanghai.

The hospital has over 20 clinical departments and is equipped with clinical laboratories, pharmacy, infusion rooms, wards and operating rooms. Renai focuses on diagnosing and treating a variety of

common and frequent occurring diseases and also provides more than 20 specialized medical programs.

Renai offers direct billing services with international and local insurance companies for policy holders. It is located in the bustling Xujiahui area. For those who drive their own vehicles, free parking is provided within the hospital compound.

Renai is a member hospital of Bo Ai medical group, the largest privately-owned Chinese healthcare group with 26 medical facilities across China's mainland.



**ADDRESS:** 127 Caoxi Road, Xuhui District  
**TEL:** (021) 5489 3781, (021) 6468 8888 \*801/810  
**EMAIL:** info@renai.cn  
**WEBSITE:** <http://www.renai-hospital.com/>



DEPARTMENTS



Gynecology, Internal Medicine, Urology, Dermatology, Dental, Medical Checkup, Ear Nose & Throat, General Surgery, Cosmetic Dermatology, Plastic Surgery, Pediatric, Orthopedics, Ophthalmology, TCM Therapy, Anesthesiology, TMC, Vaccination And Immunization



# SHANGHAI UNITED FAMILY HOSPITALS

DESCRIPTION

United Family Healthcare (UFH) is an experienced, comprehensive, patient-centered caregiver that has been providing personalized, international-level healthcare in China since 1997. Supporting local and expat individuals and families in Shanghai since 2004 with a wide range of advanced medical services, United Family now has two full-service hospitals and three neighborhood clinics, conveniently located in both Puxi and Pudong.

Our Shanghai medical facilities are operated by over 200 highly-experienced full-time doctors from over 25 different countries and regions, supported by more than 300 nurses. Visit our website (<http://shanghai.ufh.com.cn>) and scan the QR code on the website to make appointments right on your WeChat through our new Patient Portal, or simply call our Shanghai-wide Appointment Center at 400 639 3900 to experience Shanghai's foremost medical care.

DEPARTMENTS



Anesthesiology, Cardiology, Dental Clinic, Dermatology and Aesthetic Center, Emergency Medicine, Endocrinology, ENT Clinic (Ears, Nose, Throat), Eye Clinic, Gastroenterology, Internal Medicine, Laboratory, Mental Health, Nutrition Clinic, Obstetrics & Gynecology, Orthopedic & Sports Medicine, Pediatrics, Pharmacy, Physical Medicine & Rehabilitation, Plastic Surgery and Aesthetic Services, Postpartum Rehabilitation, Radiology/Imaging, Surgery, Urology, Traditional Chinese Medicine



**APPOINTMENTS:** 400 639 3900

**SHANGHAI UNITED FAMILY HOSPITAL**  
**ADDRESS:** 699 Pingtang Road, Changning District  
**HOURS:** Open 24/7

**SHANGHAI UNITED FAMILY PUDONG HOSPITAL**  
**ADDRESS:** 1598 New Jinqiao Road, Pudong New Area  
**HOURS:** Open 24/7

**XINTIANDI CLINIC**  
**ADDRESS:** Suite 402, 85 Taoyuan Road, Silver Court Building, Huangpu District  
**TEL:** (021) 6280 6660

**QUANKOU CLINIC**  
**ADDRESS:** 8 Quankou Road, Changning District  
**TEL:** (021) 2216 3999

**FENGSHANG CLINIC**  
**ADDRESS:** 689 Yunle Road, Huacao Town, Minhang District  
**TEL:** (021) 3490 0608







# International Schools

LUXURY LIVING

Students express themselves  
through performing arts at the  
British International School Shanghai.





Britannica International School,  
Shanghai  
上海不列颠英国外籍人员子女学校

"An inspiring place of learning focused on creating internationally-minded leaders of tomorrow, who are dedicated to realising their full potential through a supportive, collaborative, and inclusive international school community."



DATE FOUNDED	2013
GRADE LEVEL	Pre-Nursery to Year 13
CURRICULUM	English National Curriculum, IGCSE, and A-Level
LANGUAGES TAUGHT	English including EAL programme, French, Japanese, Korean, Mandarin, Spanish, Italian, and Hebrew
SCHOOL STRENGTHS	Personalised education, co-curricular activities, location & facilities, world languages programme
TUITION	¥196,950 - 277,550/year

DESCRIPTION



Located in the heart of the city, Britannica International School, Shanghai delivers the English National Curriculum, adapted to meet the needs of international students from 2 to 18 years of age. We are British owned and led by experienced British education experts, with the vast majority of our teaching staff being native British teachers. Our personalised approach to teaching and learning makes us an excellent school choice for international families in Shanghai.



[www.britannicashanghai.com](http://www.britannicashanghai.com)

EMAIL: admissions@britannicashanghai.com	ADDRESS: 1988 Gubei Road, Minhang District
TELEPHONE: +86 (21) 6402 7889	WECHAT: britannica_shanghai



Concordia International  
School Shanghai  
上海协和国际外籍人员子女学校

"We educate the whole child—intellectually, physically, emotionally, socially, and spiritually. Life success starts with Concordia."



DATE FOUNDED	1998
GRADE LEVEL	Preschool to Grade 12
CURRICULUM	American Curriculum with Advanced Placement
LANGUAGES TAUGHT	English, Mandarin, Spanish
SCHOOL STRENGTHS	Academics, Athletics, Fine arts
TUITION	¥195,000 - 270,000/year



Concordia is located in Jinqiao's Green City, one of Shanghai's largest international communities. The school is recognized for its dedication to academic excellence and for providing well-developed sports, fine arts, cultural, and service learning programs. Our graduates go on to attend top colleges and universities around the world. At Concordia, we welcome the whole family and value parent participation. Our ever-growing and vibrant community provides the foundation for the entire family's success.



[www.concordiashanghai.org](http://www.concordiashanghai.org)

EMAIL: admissions@concordiashanghai.org	ADDRESS: 999 Mingyue Road, Jinqiao, Pudong New Area
TELEPHONE: +86 (21) 5899 0380	WECHAT: ConcordiaSH协和
	ADMISSIONS CONTACT: Vina Peng





# Deutsche Schule Shanghai 上海德国外籍人员子女学校

"This world's largest 'Excellent German School Abroad' with two Eurocampuses in Shanghai provides a welcoming culture and caring environment for our children to endeavor, experience, and discover the world and the universe together."



Date founded	1995
Grade level	Preschool to Grade 12
Curriculum	German curriculum with international high school diploma
Languages taught	German, Mandarin, English, French, Spanish, Latin
School strengths	Children's holistic personality development, STEM-friendly School
Tuition	Kindergarten: ¥136,600 per school year School: ¥185,000 per school year
Description	The Berlin Education Program is a scientifically developed, tried, and tested framework for kindergarten teaching with six educational categories of the Berlin Education Program including health, social and cultural life, mathematics, art, nature, environment, technology, and communication aiming to prepare children as well as possible for all the different challenges they will face when they start school. The school has developed its own methodological curriculum designed to systematically teach children methods for analyzing, shaping, and developing their own learning experience.



[www.ds-shanghai.de](http://www.ds-shanghai.de)

EMAIL:	info.yj@ds-shanghai.de (Yangpu campus) info.hq@ds-shanghai.de (Hongqiao campus)
TELEPHONE:	+86 (21) 3976 0555 ext. 350 (Yangpu & Hongqiao campus, Mandarin, English & German speaking)
ADDRESS:	758 Jiangwancheng Road, Yangpu District (Yangpu campus) 350 Gaoguang Road, Qingpu District (Hongqiao campus)
ADMISSIONS CONTACT:	Ms. Sabrina Bock (Yangpu campus) Ms. Annika Hoffmann (Hongqiao campus)



# Dulwich College Shanghai Pudong 上海德威外籍人员子女学校(浦东)

"Our students have the skills and motivation to make a positive difference in the world."



DATE FOUNDED	2003
GRADE LEVEL	Toddler to Year 13
CURRICULUM	English National Curriculum, IGCSE, and IB Diploma
LANGUAGES TAUGHT	English, French, German (from Year 7), Mandarin, Spanish
SCHOOL STRENGTHS	Academic results, Visual and Performing Arts, STEAM, Sports
TUITION	¥120,200 - ¥340,100/year
DESCRIPTION	Founded in 2003, Dulwich College Shanghai Pudong is recognised for its outstanding academics based on robust holistic education that prioritises student wellbeing. Dulwich Pudong IB students consistently achieve results significantly above the global average and have alumni matriculated at Oxbridge, Ivy League and other leading universities across the world. Extra-curricular activities range from music, sports, technology as well as opportunities in service, sustainability and leadership. 43 nationalities create a vibrant intercultural environment for students to develop a truly global outlook.



<https://shanghai-pudong.dulwich.org>

EMAIL:	admissions.shanghaipudong@dulwich.org
TELEPHONE:	+86 (21) 3896 1200
ADDRESS:	Main campus: 266 Lan'an Road, Jinqiao, Pudong New Area DUCKS campus: 425 Lan'an Road, Jinqiao, Pudong New Area
ADMISSIONS CONTACT:	Anna Nikonenko, Admissions Manager





# Dulwich College Shanghai Puxi

## 上海德威外籍人员子女学校(浦西)

"We provide a truly holistic education that emphasises academic excellence coupled with a rich extracurricular programme. Our students Live Worldwide, and are leaders in sustainability and global citizenship"



DATE FOUNDED

2016

GRADE LEVEL

Toddler to Year 12 (Year 12 to commence in 2022)

CURRICULUM

English National Curriculum, IGCSE and IB Diploma

LANGUAGES TAUGHT

English, Mandarin, Spanish

SCHOOL STRENGTHS

Dulwich is academically selective and students are incredibly well supported by highly professional and caring teachers. The College is very green with state-of-the-art play and academic facilities, including an Olympic-size swimming pool and 500 seat theatre.

TUITION

¥120,200 - 340,100/year

DESCRIPTION

Dulwich College Shanghai Puxi offers an international education at its best, catering for families in the west of Shanghai who seek a world-class holistic education. Our curriculum is rigorously designed to ensure academic, physical, social, and emotional growth in each and every student. Our students uphold our College values at all times: Aim High. Work Hard. Be Kind and Respectful. Make a Difference.



[www.shanghai-puxi.dulwich.org](http://www.shanghai-puxi.dulwich.org)



EMAIL:  
admissions.shanghaipuxi@dulwich.org



TELEPHONE:  
+86 (21) 3329 9310



ADDRESS:  
2000 Qianpujing Road, Maqiao Minhang District



ADMISSIONS CONTACT:  
Wonnie Sayama, Director of Admissions  
(WeChat: DCSPX\_Admissions)



# Harrow International School

## 上海哈罗外籍人员子女学校

"Educational Excellence for Life and Leadership"



DATE FOUNDED

August 2016

GRADE LEVEL

Harrow Cubs to Year 13 (18 months to 18 years)

CURRICULUM

Early Years follow the English Early Years Foundation Stage Curriculum Framework. Pre-Prep and Prep are based on the English National Curriculum, culminating in IGCSE for Year 10 and Year 11; A Level at Sixth Form (Year 12 and Year 13)

LANGUAGES TAUGHT

English, Mandarin, Spanish

SCHOOL STRENGTHS

450 years of Harrow heritage, tradition, and global excellence; Mandarin Core Curriculum; Leadership and Service Programme; Academic Excellence: 57% of grades achieved A\* and 90% of grades achieved A/A\* in A Level 2021; All school leavers were accepted by their first-choice university including Cambridge University; Unique learning opportunity for children aged between 18 months to 24 months at Harrow Cubs. ¥240,000-330,000/year

TUITION

DESCRIPTION

A Harrow Shanghai education is based on the same ethos and identity that has characterised a Harrow education in the UK for centuries and here you will find a school where the best of Western and Eastern traditions, history and heritage are seamlessly fused.



[www.harrowshanghai.cn](http://www.harrowshanghai.cn)



TELEPHONE:  
+86 (21) 6881 8282 ext. 210/212



ADDRESS:  
588 Gaoxi Road, Pudong New Area



WECHAT:  
HarrowShanghai

FACEBOOK:

Harrow International School Shanghai





Lycée Français de Shanghai  
(Shanghai French School)  
上海法国外籍人员子女学校

"Today in Shanghai  
excellence for  
everyone. Tomorrow  
in the world, success  
for all."



DATE FOUNDED  
GRADE LEVEL  
CURRICULUM

1995  
Kindergarten to Grade 12  
National French Curriculum, which leads to the French National Diploma (Baccalauréat) with International Options, enriched by five unique and challenging language streams (General, International American, European English, International Chinese, Oriental Chinese.)

LANGUAGES TAUGHT

Three mandatory languages: French, English, and Mandarin; German or Spanish taught from Grade 7. Languages certifications: Cambridge, HSK, DELE, Goethe Institut

SCHOOL STRENGTHS

Academic results, multilingual curriculum, international and diverse community, differentiated learning and student support, international network, diversity of extra-curricular activities

TUITION  
DESCRIPTION

¥100,000 - 176,900/year  
We are an international non-profit school that welcomes 1,560+ students of 47 nationalities, aged from 3 to 18, on two campuses. We are proud to offer an excellent education combining high academic achievements, multilingual proficiency, numerous arts and sports activities, and differentiated learning adapted to everyone's needs in a truly multicultural environment. We recently built a brand new campus of 58,000 square metres in Yangpu District, shared with the German school.

[www.lyceeshanghai.com](http://www.lyceeshanghai.com)

EMAIL:  
inscriptions@lyceeshanghai.com  
Online registration: online.lfshanghai.com

TELEPHONE:  
+86 (21) 3976 0555 ext. 501  
+86 (21) 6897 6589 ext. 758

ADDRESS:  
Qingpu campus: 350 Gaoguang Road, Qingpu District  
Yangpu campus: 788 Jiangwancheng Road, Yangpu District



Nord Anglia International School  
Shanghai, Pudong  
上海英国外籍人员子女学校 (浦东校区)

"You want your child to  
excel. So do we. Visit  
us today to see how we  
transform learning."



DATE FOUNDED  
GRADE LEVEL  
CURRICULUM  
LANGUAGES TAUGHT  
SCHOOL STRENGTHS

2002  
Pre-nursery to Year 13 (2 to 18 years)  
Early Years Foundation Stage, English National Curriculum, IGCSE, IB  
English, Mandarin, French, German, Korean, Spanish  
International diversity, STEAM collaboration with MIT, and Juilliard-Nord Anglia Performing Arts Programme, high academic achievement, sports and after-school programmes, strong school community, ACT, YCT and HSK testing

TUITION  
DESCRIPTION



¥115,003 - 321,497/year  
At NAIS Pudong, we nurture every child to achieve academic success, enabling entry into the world's leading universities. Globally respected curricula are enhanced by collaborations with pre-eminent organisations such as Juilliard, MIT, and UNICEF to ensure that every child develops the skills and mindset needed to thrive in an ever changing world.



[www.naispudong.com](http://www.naispudong.com)

EMAIL:  
admissions@naispudong.com

TELEPHONE:  
+86 (21) 5812 7455 ext. 1015

ADDRESS:  
2888 Junmin Road, Pudong New Area

WECHAT:  
NAIS Pudong 上海英国学校





# Shanghai American School (SAS)

## 上海美国外籍人员子女学校

"Since we think we can, we can."



**DATE FOUNDED**  
**GRADE LEVEL**  
**CURRICULUM**

1912  
Pre-K to Grade 12  
We offer an American core curriculum, high school AP and IB diploma programmes as well as regular coursework.

**LANGUAGES TAUGHT**  
**SCHOOL STRENGTHS**

English, Mandarin, French, Spanish  
Top reputation, Extensive course offerings, University-level facilities, World-class educators (SAS faculty stay for an average of 5.5 years), Signature programs (Micro-campus, Innovation Institute, TheEleven), 100+ clubs and activities, Welcoming and truly global community

**TUITION**

Pre-K: ¥232,000; Elementary: ¥269,300/year;  
Middle: ¥275,800/year; High: ¥288,300- 293,800/year

**DESCRIPTION**



Shanghai American School, one of Asia's most respected international schools, is the kind of school you wish you would've attended when you were a kid. Our academic curriculum (Pre-K3 to grade 12 and offering both AP Capstone and IB diplomas) helps our students go "from here to anywhere." We also have over 100 award-winning clubs, and trophy-collecting sports teams. And as a non-profit, all our revenue goes back into the school, resulting in two expansive campuses with many facilities that are at university level.



[www.saschina.org](http://www.saschina.org)

**EMAIL:**  
admissions@saschina.org  
**BOOK A TOUR :**  
<http://www.saschina.org/admissions/plan-a-visit>  
**TELEPHONE:**  
+86 (21) 6221 1445 ext. 3305 (PD) 2152 (PX)

**ADDRESS:**  
Pudong: 1600 Lingbai Road, Pudong New Area  
Puxi: 258 Jinfeng Road, Minhang District  
**WECHAT:**  
SASEagles



# Shanghai Community International School

## 上海长宁国际外籍人员子女学校

"To develop inquiring, knowledgeable, and caring learners who contribute positively to their communities."



**DATE FOUNDED**  
**GRADE LEVEL**  
**CURRICULUM**

1996  
Nursery to Grade 12  
International Baccalaureate - Primary Years Programme, Middle Years Programme & Diploma Programme

**LANGUAGES TAUGHT**

Primary Language Programmes: English. Additional Language: Mandarin, French, Spanish, Korean, and Dutch

**SCHOOL STRENGTHS**

Rigorous academic programmes, Authorised IB Continuum World School, Expansive extra-curricular opportunities, Truly international and diverse community, Welcoming atmosphere, Holistic approach to education, Inquiry-based learning, Focus on student well-being, Differentiated learning, Student Support.

**TUITION**

¥122,000 - 277,500/year (all-inclusive)

**DESCRIPTION**



SCIS is an authorised IB Continuum World School with three campus locations spanning across Shanghai. SCIS offers a truly international experience, with an unparalleled community consisting of a diverse mix of outstanding teachers, students, and parents representing over 60 nationalities and cultures. SCIS leverages this unique community to provide a personalised approach to holistic education, ensuring all students have the opportunity to be successful, and develop as life-long learners.



[www.scis-china.org](http://www.scis-china.org)

**EMAIL:**  
admissions@scis-china.org  
**TELEPHONE:**  
+86 (21) 6261 4338 (HQ)  
+86 (21) 6295 1222 (HQ ECE)  
+86 (21) 5812 9888 (PD)

**ADDRESS:**  
Hongqiao campus: 1161 Hongqiao Road, Changning District  
Hongqiao ECE campus: 2212 Hongqiao Road, Changning District  
Pudong campus: 198 Hengqiao Road, Zhoupu, Pudong New Area  
**WECHAT:**  
SCIS-CHINA





# Shanghai Livingston American School

## 上海李文斯顿美国外籍人员子女学校

"The mission of Shanghai Livingston American School is to prepare students for academic and personal success."



DATE FOUNDED  
NEW FOR 2021

2003  
SLAS has been providing an excellence in education for over 17 years. In 2021 we have upgraded our in-class equipment to further enhance the learning environment for our children. SLAS has added additional technology courses including SolidWorks and Adobe Suite training.

GRADE LEVEL  
CURRICULUM

Nursery to Grade 12  
Common Core aligned California Curriculum with Advanced Placement (AP) accredited by WASC

LANGUAGES TAUGHT  
SCHOOL STRENGTHS  
TUITION

English, Japanese, Mandarin, Spanish  
Small class size, Location, Financial aid available, Dedicated service  
Nursery - Pre-K: ¥115,600/year; Kindergarten: ¥141,120/year; Elementary: ¥175,260/year; Middle: ¥185,750/year; High: ¥191,645/year

DESCRIPTION



With instruction and activities guided through four core values (proficient communicator, confident individual, creative thinker, compassionate citizen), Shanghai Livingston American School (SLAS) creates an environment of enquiry set against American culture fused with an international perspective, resulting in students receiving an education that prepares them for academic and personal success as global citizens.



[www.laschina.org](http://www.laschina.org)

EMAIL:  
[info@laschina.org](mailto:info@laschina.org)  
TELEPHONE:  
+86 (21) 6238 3511

ADDRESS:  
580 Ganxi Road, Changning District  
ADMISSIONS CONTACT:  
Carlton Lamb



# Tiny Tots International Pre-School & Kindergarten

## 上海泰宁外籍人员子女幼儿园

"Tiny Tots is where successful learning begins."



DATE FOUNDED  
GRADE LEVEL  
CURRICULUM

1997  
1-6 years  
Tiny Tots uses an American curriculum called World of Wonders for 3 to 5-year-olds and Wonders for 5 to 6-year-olds. It is a developmentally appropriate, research-based curriculum providing structure and support to all young learners. The curriculum builds a strong foundation in all the developmental domains. The Nursery classes (2-3 years) use our in-house sequential step curriculum to build a foundation for confident and competent children.

LANGUAGES TAUGHT

Tiny Tots is an English immersion school, where all classes are taught in English. Chinese classes are offered in class and as an extra-curricular activity.

TUITION  
DESCRIPTION

2021-22 School Year: full-day ¥157,800; half-day ¥129,000  
For more than 20 years, Tiny Tots has been an inspiring and caring environment for young children. We have kept our school small to provide children with small class sizes and individual attention. Tiny Tots is a family oriented, diverse and inclusive community of learners. We offer a strong academic program and broad learning opportunities. Tiny Tots remain the only English-language international kindergarten in all of Shanghai.



[www.tinytots.com.cn](http://www.tinytots.com.cn)

EMAIL:  
[info@tinytots.com.cn](mailto:info@tinytots.com.cn)  
[tinytotssg@tinytots.com.cn](mailto:tinytotssg@tinytots.com.cn)  
TELEPHONE:  
+86 (21) 6431 3788 (XH)  
+86 (21) 6480 8933 (MH)

ADDRESS:  
Xuhui Campus: 43 West Fuxing Road  
Minhang Campus: 50 Gumei Road  
WECHAT:  
TinyTotsShanghai





# The British International School Shanghai (BISS) Puxi 上海英国外籍人员子女学校(浦西校区)

"Our students are the best testimony to our school's success. We take great pride in their achievements and in supporting them all to be the best that they can be."



**DATE FOUNDED**  
**GRADE LEVEL**  
**CURRICULUM**  
**LANGUAGES TAUGHT**  
**SCHOOL STRENGTHS**

2004  
Pre-Nursery to Year 13 (2 years to 18 years)  
English National Curriculum, IGCSE and IB, and an integrated Shanghai Dutch School  
English including EAL programme, French, Korean, Mandarin, Spanish, German  
Sports, over 140 extra-curricular and professional coaching activities, collaborative partnerships with Juilliard and MIT

**TUITION**  
**DESCRIPTION**



¥234,740 - 333,680/year  
The British International School Shanghai boasts academic standards that are second to none and a curriculum as rich as it is broad. The school prides itself on offering students of over 50 different nationalities the opportunity to perform at their very best, both academically as well as in arts and sports. Following the UK national curriculum from Early Years through to (I)GCSE and on to the International Baccalaureate, the British International School Shanghai has a long pedigree of academic excellence that enables our students to enter the finest universities around the world.



[www.bisspuxi.com](http://www.bisspuxi.com)

**EMAIL:**  
bpx.admissions@bisspuxi.com  
**TELEPHONE:**  
+86 (21) 6221 7542

**ADDRESS:**  
111 Jinguang Road, Huacao Town, Minhang District  
**WECHAT:**  
BISSPuxi | 上海英国学校



# Wellington College International Shanghai 上海惠灵顿外籍人员子女学校

"We aspire for academic excellence within a caring, international community, developing well-rounded individuals with strong values and skills to thrive in a global society."



**DATE FOUNDED**  
**GRADE LEVEL**  
**CURRICULUM**

2014  
Nursery to Year 13  
3 to 5 years old: English EYFS curriculum; 6 to 14 years old: English National Curriculum; 14 to 16 years old: IGCSE; 16 to 18 years old: IBDP

**LANGUAGES TAUGHT**  
**SCHOOL STRENGTHS**

English, French, Mandarin, Spanish  
Academic excellence, Extensive enrichment programme, Global reputation, Daily Mandarin provision, World class facilities

**TUITION**

**DESCRIPTION**



¥252,000 - ¥338,000/year (2021-2022)  
Opened in August 2014 and located in the New Bund area, Wellington College International Shanghai is a fully co-educational day school with over 1,600 pupils, aged 3 to 18 years old. Consistent with the ethos of its prestigious partner in the UK, the College seeks to develop the 'Wellington Identity' in every child. Wellingtonians are encouraged to be Inspired, Intellectual, Independent, Individual, and Inclusive. Boasting a state-of-the-art campus, Wellington has built a vibrant community where all pupils strive to achieve academic excellence and engage in a comprehensive range of opportunities in music, performing arts, and sports.



[shanghai.wellingtoncollege.cn](http://shanghai.wellingtoncollege.cn)

**EMAIL:**  
admissions.shanghai@wellingtoncollege.cn  
**TELEPHONE:**  
+86 (21) 5185 3885

**ADDRESS:**  
Wellington: 1500 Yaolong Road, Pudong New Area  
Early Years Centre: 195 Tongwan Road, Pudong New Area  
**WECHAT:**  
WellingtonCollegeSH





# Western International School of Shanghai (WISS) 上海西华外籍人员子女学校

"WISS cultivates healthy, balanced, confident, and ethical people; challenging students to inquire, wonder, discover, and seize each day."



DATE FOUNDED  
GRADE LEVEL  
CURRICULUM

LANGUAGES TAUGHT  
SCHOOL STRENGTHS

TUITION  
DESCRIPTION



2006  
Pre-Nursery to Grade 12  
International Baccalaureate (IB) Programme including PYP, MYP, DP, CP, IB Curriculum, Caring and diverse community  
English, Mandarin, German, Korean, Spanish  
Student-teacher ratio: 5:1, ISTA Performing Arts Academy Shanghai hosted at WISS and Stoke City FC Academy at WISS  
¥170,500-275,600 /year (Early Bird: ¥161,975 - 261,820/year)  
The Western International School of Shanghai (WISS) is a leading international school with a 15-year history of educating young people from across the globe in a caring and inspirational environment. WISS is the only international school in China offering all four IB Programmes in which they broaden the minds of children through innovative, high-quality, inquiry-based learning and teaching, with individualized student pathways that empower students. WISS accommodates a diverse student community of over 40 nationalities and offers a vibrant learning community that explore challenging aspects of the world. Conveniently located in New Hongqiao, WISS is nestled amongst green residential spaces, with easy access to all major commercial and tourist areas.



[www.wiss.cn](http://www.wiss.cn)

EMAIL:  
admissions@wiss.cn  
TELEPHONE:  
+86 (21) 6976 6388

ADDRESS:  
555 Lianmin Road, Xujing Town, Qingpu District  
ADMISSIONS CONTACT:  
Peter Bezuidenhout: pbezuidenhout@wiss.cn



# Yew Chung International School of Shanghai (YCIS) 上海耀中外籍人员子女学校

"We offer an education characterised by a multicultural and bilingual learning environment, with an emphasis on academic excellence, equipping students with the tools necessary for their future success."



DATE FOUNDED  
GRADE LEVEL  
CURRICULUM  
LANGUAGES TAUGHT  
SCHOOL STRENGTHS

TUITION  
DESCRIPTION



Founded in Hong Kong 1932, established in Shanghai 1993  
Kindergarten (K2) to Year 13  
Internationalised English National Curriculum, IGCSE, IBDP  
English, Mandarin, Spanish (in Secondary school)  
Chinese Language & Culture, Placement at top global universities, Academics, Music, Art, Co-Curricular Activities, Sports  
¥154,200 - ¥328,500 (2021/2022)  
YCIS was the first international school in Shanghai officially registered and recognised by the Chinese government, and the only in China to receive the Cambridge Award for Excellence in Education. Backed by 90 years of experience and history, it is committed to raising globally competent and compassionate leaders with a servant's heart, who aspire to, and act for, a better world. The school is devoted to helping students acquire diverse skills, multilingualism, multicultural understanding, and strong values. With five campuses in prime locations in Puxi and Pudong, YCIS provides world-class international education for children aged 2-18 years old from over 50 countries and regions. Each year, students excel in internationally recognised exams, with over 50% of graduates earning the bilingual International Baccalaureate Diploma, leading to offers at top universities and institutions worldwide.



[www.ycis-sh.com](http://www.ycis-sh.com)

EMAIL:  
enquiry@sh.ycef.com  
TELEPHONE:  
+86 (21) 2226 7666  
WECHAT:  
YCISShanghai

ADDRESS:  
YCIS Puxi ECE (Ronghua) Campus: 59 Ronghua Xi Dao, Puxi  
YCIS Puxi Primary (Hongqiao) Campus: 11 Shuicheng Road, Puxi  
YCIS Puxi Secondary (Gubei) Campus: 18 Ronghua Xi Dao, Puxi  
YCIS Pudong Regency Park Campus: 1817 Huamu Road, Pudong  
YCIS Pudong Century Park Campus: 1433 Dongxiu Road, Pudong





# Museums, Galleries & Performance

LUXURY LIVING

---

Broaden your mind with art,  
history and culture at the Long Museum.



CADILLAC SHANGHAI |  
CONCERT HALL

Formerly known as Nanking Theatre and inaugurated in March, 1930, Shanghai Concert Hall is the first western classical building designed by Chinese architects, as well as the first dedicated concert hall in China. It was renamed Beijing Cinema in 1950 and then Shanghai Concert Hall in 1959. In July 2003, as part of the urban redevelopment plan, it was moved from its original location on 1st October 2004, the concert hall reopened.

As a landmark music venue of Shanghai, Shanghai Concert Hall has been a centre for music events held in the city. Since its inauguration, it has hosted the Bavarian Radio Symphony Orchestra, the Munich Philharmonic, the Royal Philharmonic Orchestra, Isaac Stern, Maurizio Pollini, and other internationally renowned orchestras and musicians. Shanghai Concert Hall is dedicated to bringing high-quality concerts of classical music, as well as many other music genres including jazz and crossover to the public. It is hailed as “a palace of classical music, a window for pop music and a base for popularizing music” by Shanghai citizens.

**ADDRESS:** 523 East Yan'an Road, Huangpu District  
**TEL:** (021) 5386 6666  
**WEBSITE:** www.shanghaiconcerthall.org

LONG MUSEUM - WEST BUND

This is one of the largest private museums in China, with its sister being the Long Museum in Pudong. Both house a collection put together over the past 20 years by "super collectors" Liu Yiqian and his wife Wang Wei, who, in 2012, became the first Chinese mainlanders to be included in the ART news 200 Top Collectors list. Their collection boasts close to 300 pieces by over 200 artists. Both museums are dedicated not just to showcasing their private collections, but also to large-scale art exhibitions, research, and public education.

The main gallery space consists of a unique umbrella-vaulted structure of four floors. The basement features a permanent exhibit of precious ancient Chinese artifacts and artworks throughout Chinese history, while the first and second floors are dedicated to contemporary art from a variety of mediums including sculptures, paintings, installations, and new media. The museum includes a river-view restaurant, a concert hall, an exhibition hall for children, a library, and additional spaces designed to enable more public involvement and interaction.

**ADDRESS:** 3398 Longteng Avenue, Xuhui District  
**TEL:** (021) 6877 8787  
**WEBSITE:** www.thelongmuseum.org

SHANGHAI MUSEUM

If the ancient arts are more your thing, head to the Shanghai Museum in People's Square. This museum is divided into ten sections: ancient Chinese bronzes, sculpture, ceramics, jades, seals, calligraphy, coin and currency, paintings, Ming and Qing Dynasty furniture and crafts of China's national minorities. The ambience is one of hushed reverence, as the space houses many pieces that are significant to China's cultural heritage. Thus for their protection, many of the artworks on display are in darkened rooms, with display cases that light up only when visitors stand in front of them to rather dramatic effect.

The scale and quality of the collection is what make it one of the most famous in China: 120,000 pieces along with a library storing approximately 200,000 volumes. The museum also puts on special exhibitions and lectures from time to time. Admission is free, so there's no need to stroll around the place for hours until you feel like you got your money's worth. Audio guides are available for a fee.

**ADDRESS:** 201 Renmin Avenue, Huangpu District  
**TEL:** (021) 6372 3500  
**WEBSITE:** www.shanghaimuseum.net

SHANGHAI NATURAL  
HISTORY MUSEUM

Once housed in Shanghai's Concession-era Cotton Exchange, the Shanghai Natural History Museum has since moved to a new home in the Jing'an Sculpture Park. The new facility, is inspired by themes found in nature: the northern façade's tectonic wall recalls Earth's strata, the eastern façade, China's forests and the inside of a chambered nautilus. The museum incorporates smart indoor and outdoor design to create a memorable, hands-on learning experience for visitors of all ages.

The immense exhibition space allows the museum to display a considerable portion of its 290,000-piece collection, including a 140-million-year-old dinosaur skeleton of the mamenchisaurus as well as specimens of the Yellow River mammoth, the Yangtze alligator, giant salamander and giant panda. The museum has integrated mobile technology that enables visitors to interact with the exhibits via their mobile devices.

**ADDRESS:** 510 West Beijing Road (Inside of Jing'an Sculpture Park), Jing'an District  
**TEL:** (021) 6862 2000  
**WEBSITE:** www.snhm.org.cn

MOCA

This non-profit, independent museum is dedicated to the promotion of contemporary art, both eastern and western. Its inclusive, open-minded approach means a diverse range of exhibitions from many different cultures are showcased here—the last couple of years have seen a Van Cleef & Arpels retrospective and a celebration of 25 years of Pixar. It may not exhibit the same kind of cutting-edge works one normally associates with the words "contemporary art," but the links it has forged with other museums around the world and its extensive team of curators have placed it solidly at the forefront of its field.

Remarkably, every exhibition offers children and young adults the chance to be creative themselves in some way, with MoCA's art teachers offering art history lessons as well as hands-on creative classes. Guided tours are also available, and there is often a talk given by the featured artist before each new exhibition. Furthermore, the biannual MoCA Envisage considers the direction and motifs of contemporary Chinese art.

**ADDRESS:** Gate 7, People's Park, 231 West Nanjing Road, Huangpu District  
**TEL:** (021) 6327 9900  
**WEBSITE:** www.mocashanghai.org

SAIC SHANGHAI  
CULTURE SQUARE

As director Ling Ling says, "We're first and foremost a musical theater center." The grand 65,000 sqm space, which can hold over 2,000 people, focuses on bringing Broadway to China as both translated Western favorites and homegrown productions. Though SCS originally planned to show nothing but musicals, they now have a program of about 50 percent musicals and 50 percent jazz and popular concerts. Notable showings have included Ghost the Musical and Swan Lake on Ice.

The space itself is expansive, and its exterior, designed by Richard Blinder, evokes a "phoenix spreading its wings." Yet what really shines is SCS's interior features, which include a naturally lit lobby, artist Ding Shaoguang's massive LED-lit rainforest painting, rain/flood technology, and the country's only large-scale ice-making machine. Though the Chinese musical theater scene is still rather nascent, programming manager Richard Fei remains hopeful: "Broadway has had 100 years, we've had less than 10."

**ADDRESS:** 597 Middle Fuxing Road, Huangpu District  
**TEL:** (021) 5461 9961  
**WEBSITE:** www.shculturesquare.com

SHANGHAI ORIENTAL ART CENTER

Designed by French architect Paul Andreu and the Huadong Architectural Design & Research Institute Co., this seven-level, 40,000 sqm lotus-shaped building is one of the best known performance centres in China. The ambitious design merges aesthetics with functionality, with a façade made up mostly of laminated glass and perforated metal sheets. Five hemispherical halls, or "petals," interconnect to form the shape of a butterfly from above.

Each of these petals is marked by a particular coloured pebble hanging from the walls that each denote the Entrance Hall, Performance Hall, Concert Hall, Exhibitions Hall and Opera Hall. There are also plenty of public facilities inside such as an arts library, music shops, restaurants and a multimedia centre. Officially opened at the end of 2004, past highlights include the Berlin Philharmonic. Other weekly attractions are the Classical Shanghai Nights and Weekend Jazz Salon, and the Oriental Charm Concert every two weeks.

**ADDRESS:** 425 Dingxiang Road, Pudong New Area  
**TEL:** (021) 6854 1234  
**WEBSITE:** www.shoac.com.cn

SHANGHAI SYMPHONY  
ORCHESTRA HALL

This hall is home to the Shanghai Symphony Orchestra, one of the oldest and best of its kind in Asia. While championing and promoting contemporary Chinese music, the orchestra has carried on western orchestral traditions in China over the years. It has toured abroad since the 1970s, having played Carnegie Hall in New York and the Berlin Philharmonic—a first for a Chinese orchestra.

The history of the orchestra spans three centuries and over 10,000 concerts. Recent video recordings of Zhu Jian'er's symphonies and Tan Dun's multimedia concerto 'The Map' have added to their growing influence at home and abroad.

They also provided the music for the world-famous Chinese film Crouching Tiger, Hidden Dragon. In addition to its classical music programme, they also host a yearly Contemporale concert series, which has featured acts such as John Grant, Vieux Farka Touré, Destroyer, Damien Rice and Lambchop.

**ADDRESS:** 1380 Middle Fuxing Road, Xuhui District  
**TEL:** (021) 400 821 0522  
**WEBSITE:** www.sh-symphony.com



## Health

Body & Soul Clinics	116
Columbia Kaiyi China	117
DeltaHealth Hospital Shanghai	118
Jiahui International Hospital	119
Mindfront Shanghai Clinic	120
ParkwayHealth	121
Renai International Medical Center	122
Shanghai United Family Hospitals	123

## Hotels

Andaz Xintiandi, Shanghai	84
Bulgari Hotel Shanghai	84
Grand Hyatt Shanghai	58
Hilton Shanghai Hongqiao	85
Hotel Indigo Shanghai Jing'an	85
Jing An Shangri-La, Shanghai	60
Kerry Hotel Pudong, Shanghai	62
La Villa by La Montagne	56
Pudong Shangri-La, Shanghai	64
Radisson Blu Forest Manor Shanghai Hongqiao	66
Radisson Collection Hotel Yantze Shanghai	68
Shangri-La Qiantan, Shanghai	70
The Langham, Shanghai, Xintiandi	86
The Middle House	72
The Peninsula Shanghai	86
The Portman Ritz-Carlton, Shanghai	74
The Puli Hotel and Spa	76
The Ritz-Carlton Sanya	87
The Ritz-Carlton Shanghai, Pudong	78
The Westin Bund Center Shanghai	87
Waldorf Astoria Shanghai on The Bund	82

## International Schools

Britannica International School, Shanghai	126
Concordia International School Shanghai	127
Deutsche Schule Shanghai	128
Dulwich College Shanghai Puxi	129
Dulwich College Shanghai Pudong	130
Harrow International School Shanghai	131
Lycée Français de Shanghai	132
Nord Anglia International School Shanghai, Pudong	133
Shanghai American School (SAS)	134
Shanghai Community International School	135
Shanghai Livingston American School	136
Tiny Tots International Pre-School & Kindergarten	137
The British International School, Shanghai	138
Wellington College International Shanghai	139
Western International School of Shanghai (WISS)	140
Yew Chung International School of Shanghai (YCIS)	141

## Museums, Galleries & Performance

Cadillac Shanghai Concert Hall	144
Long Museum - West Bund	144
MOCA	144
SAIC Shanghai Culture Square	144
Shanghai Museum	145
Shanghai Natural History Museum	145
Shanghai Oriental Art Center	145
Shanghai Symphony Orchestra Hall	145

## Restaurants

Azul Italiano	92
Chili's Cafe & Bar	94
Colca	96
Maison Lameloise	96
Mr & Mrs Bund by Paul Pairet	97
Polux by Paul Pairet	97
T'ang Court	98
Ultraviolet by Paul Pairet	98
Wonderland	99
Zeniya Shanghai	99

## Serviced Apartments & Villas

Base	20
Central Residences II	24
Fraser Suites Top Glory, Shanghai	26
IFC Residence	28
Jing'an Kerry Residences	29
Kerry Parkside Residences	30
Le Ville Residence Shanghai Biyun	31
Le Ville Residence Shanghai Jing'an	32
Lanson Place Parkside, Shanghai	34
Lanson Place Sunland, Shanghai	35
Oakwood Residence Shanghai	38
Primus Residence Shanghai Hongqiao	36
Shanghai Centre	39
Shanghai Hongqiao Tongpai Hotel	40
Stanford Residences Jing'an	41
Stanford Residences Xu Hui	42
The Emerald	43
Times Square Apartments	46
Willowbrook at Greenhills	48

## Wellness & Spa

OCTAVE Institute	104
Zeta Villa	108

# Shanghai Family

Find the best fit for your child's education




Scan the QR code to subscribe School Directory

Shanghai Family

Parents & Kids SHANGHAI

虎媽牛娃 HUMANIUWA





What Will You  
Remember Most  
About Shanghai?

The Bund? A promotion? The adventure of a lifetime?  
Willowbrook at The Greenhills

Where quality living is the essence of your journey An exclusive international villa community located in the heart of Jinqiao, Pudong

- Energy efficient living
- Full clubhouse amenities
- Convenient transportation
- Spacious designer kitchens and bathrooms
- Concierge service



WILLOWBROOK  
AT THE GREENHILLS

Leasing Hotline

**+(86 21) 6856 8888**

[info@willowbrook.com.cn](mailto:info@willowbrook.com.cn)